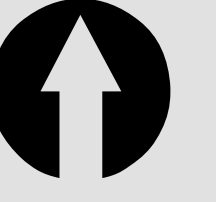


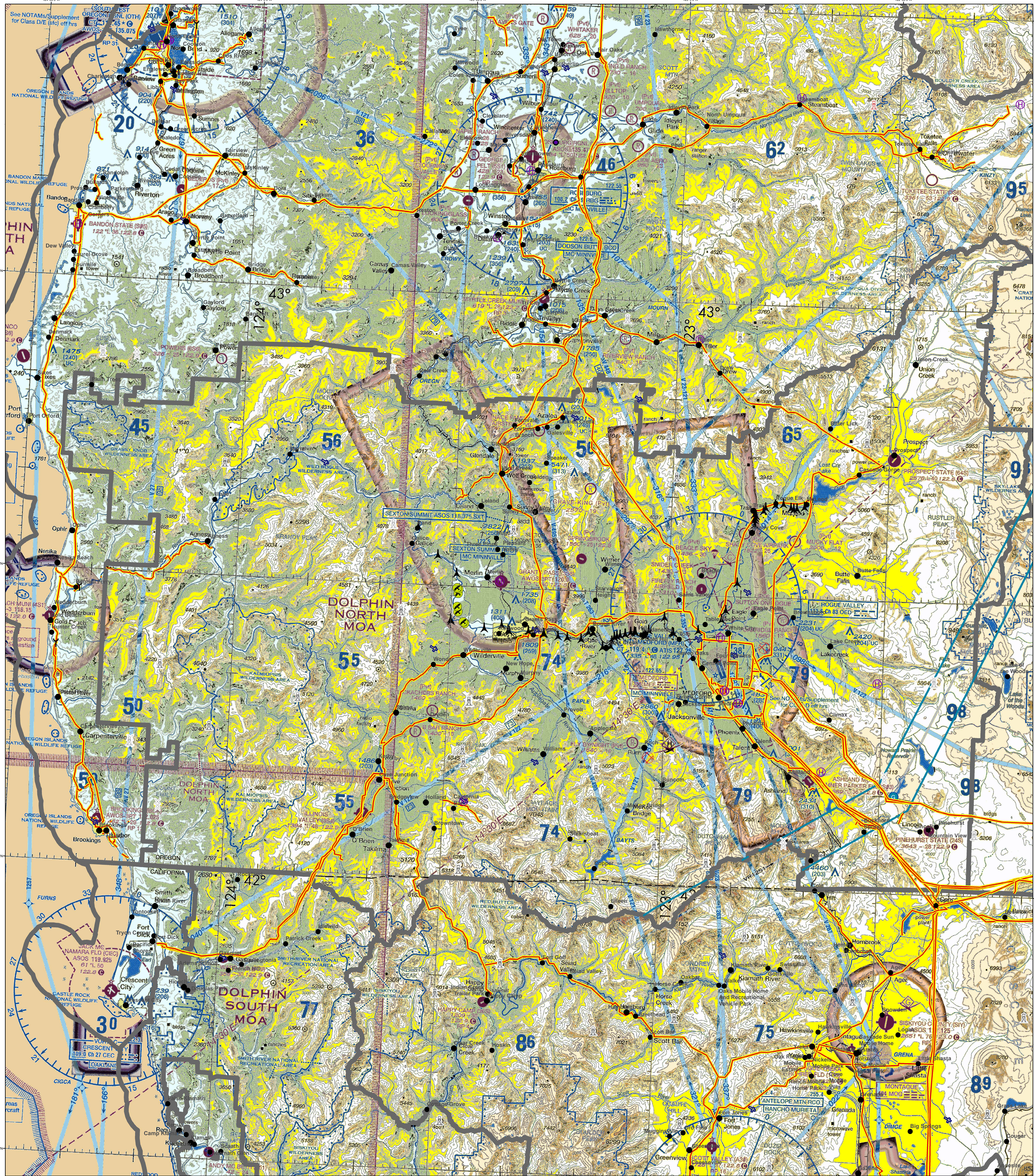
# Known Aviation Hazards

## Rogue Valley Interagency Communication Center

Revised: 4/29/2021



Map Scale: 1:224,000  
0 2.5 5  
Miles



<p><b>AIRPORTS</b></p> <ul style="list-style-type: none"> <li>Other than hard-surfaced runways</li> <li>Hard-surfaced runways 1500 ft. to 8069 ft. in length</li> <li>Hard-surfaced runways 1500 ft. to 8069 ft. in length</li> <li>Open dot within hard-surfaced runway</li> <li>Configuration indicates approximate VOR, VOR/DME, or VORTAC location.</li> </ul> <p>All recognizable hard-surfaced runways, including those closed, are shown for visual identification. Airports may be public or private.</p> <p><b>TOPOGRAPHIC INFORMATION</b></p> <ul style="list-style-type: none"> <li>Power Transmission Line</li> <li>Aerial Cable</li> <li>Mountain Pass</li> <li>Mountain Peak</li> </ul>	<p><b>ADDITIONAL AIRPORT INFORMATION</b></p> <ul style="list-style-type: none"> <li>Private (PVT) - Non-public use having emergency or landmark value</li> <li>Military - Other than hard-surfaced; all military airports are identified by abbreviations (e.g., MAF, etc.) DOD users, for complete airport information consult DOD FLIP.</li> <li>Unimproved</li> <li>Abandoned</li> <li>Partial</li> <li>Ultra-light</li> <li>Helicopter</li> <li>Services - fuel available and field tended during normal working hours depicted by use of ticks around basic airport symbol. (Normal working hours are Mon thru Fri 1000 A.M. to 400 P.M. local time.)</li> <li>Consult AFD for service availability at airports with hard-surfaced runways greater than 8069 ft.</li> <li>Starburst airport beacon in operation Sunset to Sunrise</li> </ul>	<p><b>AIRPORT TRAFFIC SERVICE AND AIRSPACE INFORMATION</b></p> <ul style="list-style-type: none"> <li>Class B Airspace</li> <li>Class C Airspace (Mode C - see FAR 91.151(A))</li> <li>Class D Airspace</li> <li>Class E Airspace (with floor 700 ft. above surface)</li> <li>Class E Airspace (with floor 1200 ft. greater above surface that abuts Class G Airspace)</li> <li>Class E Airspace greater than 700 ft. above surface, otherwise designated as shown above.</li> <li>Class E Airspace low altitude (Federal Airways values indicates surface up to but not including that value)</li> <li>Class E (etc) Airspace</li> <li>Class E Airspace with floor 700 ft. above surface</li> <li>Class E Airspace with floor 1200 ft. greater above surface that abuts Class G Airspace</li> <li>Class E Airspace greater than 700 ft. above surface, otherwise designated as shown above.</li> <li>Class E Airspace low altitude (Federal Airways values indicates surface up to but not including that value)</li> <li>Class E (etc) Airspace</li> <li>Class E Airspace with floor 700 ft. above surface</li> <li>Class E Airspace with floor 1200 ft. greater above surface that abuts Class G Airspace</li> </ul>	<p><b>OBSTRUCTIONS</b></p> <ul style="list-style-type: none"> <li>1000 ft. and higher AGL</li> <li>Below 1000 ft. AGL</li> <li>Group Obstruction</li> <li>Obstruction with high-intensity lights may operate part-time</li> <li>Elevation of the top above mean sea level</li> <li>Height above ground</li> <li>Under construction or reported position and elevation unverified</li> <li>NOTICE: Guy wires may extend outward from structures.</li> </ul>	<p><b>MISCELLANEOUS</b></p> <ul style="list-style-type: none"> <li>Isogonic Line (2010 VALUE)</li> <li>Ultralight Activity</li> <li>Hang Glider Activity</li> <li>Parachute Jumping Area (See Airport/Facility Directory)</li> <li>Marine Light</li> <li>VOR/VORTAC</li> <li>VOR/VORTAC</li> <li>Falcon Avoidance Area (1000 ft. vertical separation)</li> </ul>	<p><b>LOCALLY IDENTIFIED VERTICAL OBSTRUCTIONS</b></p> <p>(Towers, towers under construction, towers less than 200 ft. AGL, towers and repeaters &lt; 200 ft. AGL, towers shown in gray, all others shown in red)</p> <ul style="list-style-type: none"> <li>Tower</li> <li>Lookout</li> <li>Repeater</li> <li>Overhead Cables</li> <li>Bridging Area</li> <li>Blindings</li> <li>Main Power Lines</li> <li>Wire Hazards</li> <li>Aerial Recreation Areas</li> </ul> <p><b>Military Training Routes</b></p> <ul style="list-style-type: none"> <li>Visual Route Leg Identifier</li> <li>Visual Route Outer Boundary</li> <li>Instrument Route Leg Identifier</li> <li>Instrument Route Outer Boundary</li> <li>Slow Route Leg Identifier</li> <li>Slow Route Outer Boundary</li> <li>Slow Route Line</li> </ul>	<p><b>NATIONAL WIND FACILITY HAZARDS (FAA)</b></p> <ul style="list-style-type: none"> <li>Met Towers &lt; 200 ft AGL</li> <li>Met Towers &gt; 200 ft AGL</li> <li>Windmills of Unknown Height</li> <li>Windmills &lt; 200 ft AGL</li> <li>Windmills &gt; 200 ft AGL</li> <li>Wind Farm &lt; 200ft AGL</li> <li>Wind Farm &gt; 200ft AGL</li> </ul> <p><b>ADMINISTRATIVE FEATURES</b></p> <ul style="list-style-type: none"> <li>Guard Stations</li> <li>Dispatch Areas</li> <li>Aerial Refuel Routes</li> <li>AR05AV, AR305BV</li> </ul> <p><b>Note:</b> Not all legend items may appear in the map extent.</p>
---	---	---	--	--	---	---

The USDA Forest Service makes no warranty as to the accuracy, reliability or completeness of these data for individual or aggregate use with other data. Original data were compiled from various sources. This information may not meet National Map Accuracy Standards. This product was developed through digital means and may be updated without notification.