

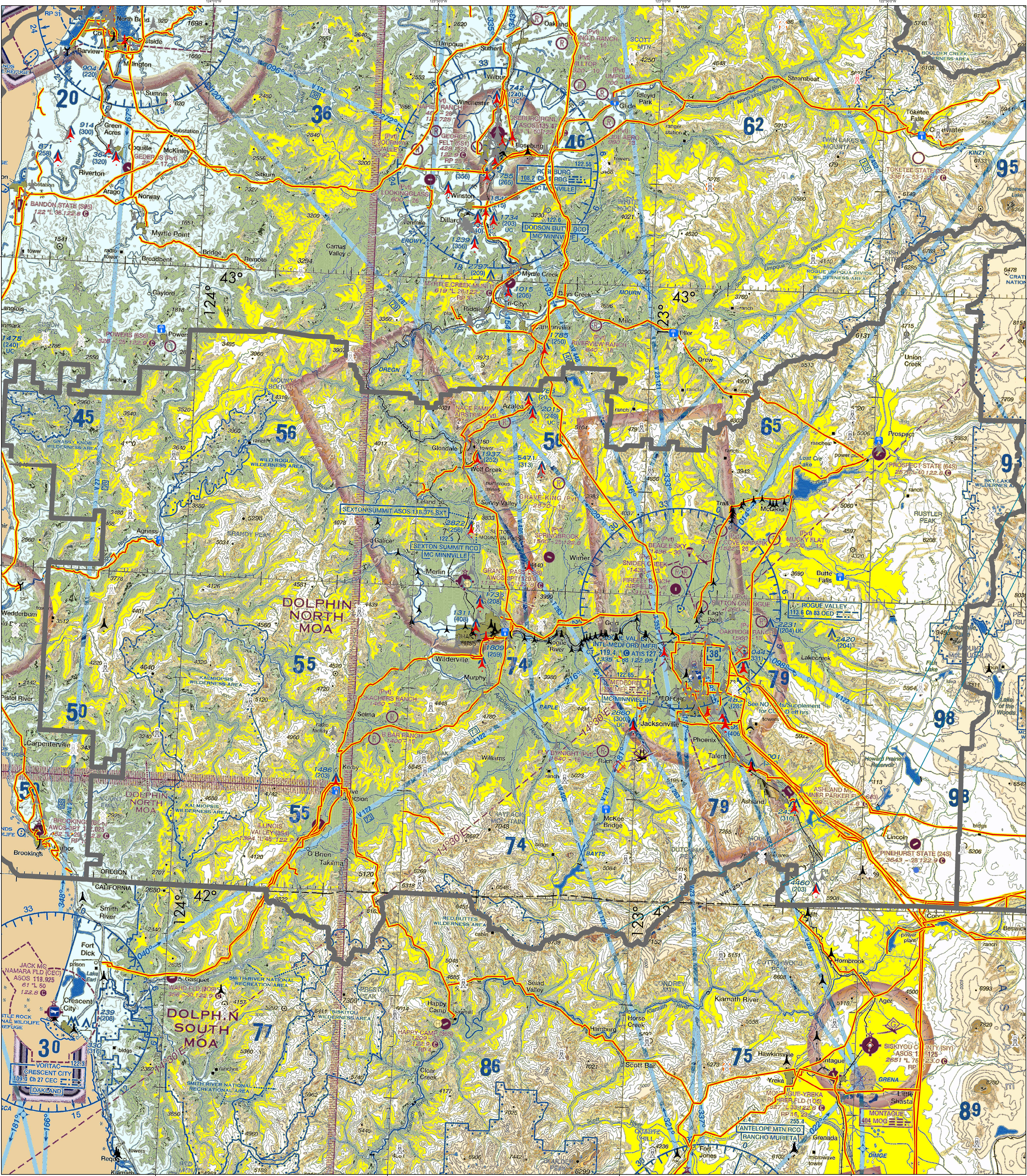
Known Aviation Hazards

Rogue Valley Interagency Communication Center

Revised: 5/10/2022



Map Scale: 1:212,000
0 2.5 5
Miles



<p>AIRPORTS</p> <p>(Airports having Control Towers are shown in Blue, all others Magenta)</p> <ul style="list-style-type: none"> Other than hard-surfaced runways Hand-surfaced runways 1500 ft. to 8069 ft. in length Hand-surfaced runways 1500 ft. to 8069 ft. in length Open dot within hard-surfaced runway Configuration indicates approximate VOR, VOR/DME, or VORTAC location. <p>All recognizable hard-surfaced runways, including those closed, are shown for visual identification. Airports may be public or private.</p> <p>TOPOGRAPHIC INFORMATION</p> <ul style="list-style-type: none"> Power Transmission Line Aerial Cable Elevation (Base of Tower) Mountain Pass Elevation of Pass 	<p>ADDITIONAL AIRPORT INFORMATION</p> <ul style="list-style-type: none"> Private (PVT) - Non-public use having emergency or landmark value Military - Other than hard-surfaced; all military airports are identified by abbreviations: FLD, NAS, JAF, etc. DOD users, for complete airport information consult DOD FLIP. Unimproved Abandoned Paraded Ultra-light Having landmark value Fight Park 3000 ft. or greater Normal <p>Services - fuel available and field tended during normal working hours depicted by use of ticks around basic airport symbol. (Normal working hours are Mon thru Fri 10:00 A.M. to 4:00 P.M. local time.)</p> <p>Consent AFD for service availability at airports with hard-surfaced runways greater than 8069 ft.</p> <p>Rotating airport beacon in operation Sunset to Sunrise</p>	<p>AIRPORT TRAFFIC SERVICE AND AIRSPACE INFORMATION</p> <p>Only the controlled and reserved airspace effective below 18,000 ft. MSL are shown on this chart. All times are local.</p> <ul style="list-style-type: none"> Class B Airspace Class C Airspace (Mode C - see FAR 91.215(A)) Class D Airspace Class E Airspace Class E (4c) Airspace Class E Airspace with floor 700 ft. above surface Class E Airspace with floor 1200 ft. or greater above surface that abuts Class G Airspace <p>2400 MSL Differentiates floors of Class E Airspace greater than 700 ft. above surface. Class E Airspace exists at 1200' AGL unless otherwise designated as shown above. Class E Airspace low altitude Federal Airways are indicated by center line. Intersection Arrows are directed towards facilities which establish intersection.</p> <p>Total mileage between NAVAIDS on direct Airways</p> <p>Class E Airspace low altitude RNAV Routes are indicated by center line.</p> <p>RNAV Waypoint</p>	<p>OBSTRUCTIONS</p> <p>1000 ft. and higher AGL</p> <p>Below 1000 ft. AGL</p> <p>Obstruction with high-intensity lights may operate part-time.</p> <p>Elevation of the top above mean sea level - Height above ground - Under construction or reported position and elevation unconfirmed</p> <p>NOTICE: Guy wires may extend outward from structures.</p> <p>VPXYZ Base Airport/Facility Directory for latitude/longitude.</p> <p>Falcon Avoidance Area (1000 ft. vertical separation)</p>	<p>MISCELLANEOUS</p> <ul style="list-style-type: none"> Isogonic Line (2010 VALUE) Ultralight Activity Hang Glider Activity Parachute Jumping Area (See Airport/Facility Directory) Marine Light VPXYZ Base Airport/Facility Directory for latitude/longitude. Falcon Avoidance Area (1000 ft. vertical separation) 	<p>LOCALLY IDENTIFIED VERTICAL OBSTRUCTIONS</p> <p>(These towers and obstacles of unusual height shown in Black. Towers, lookouts and repeaters < 200ft AGL shown in gray. All others shown in Red)</p> <ul style="list-style-type: none"> Tower Lookout Repeater Overhead Cables Retardant Jetison Areas Hang Glider Sites Glider Operation Area Ballooning/Paraglider Sites Rocket Launch Sites Military Training Routes Visual Route Leg Identifier Visual Route Outer Boundary Instrument Route Leg Identifier Instrument Route Outer Boundary Slow Route Leg Identifier Slow Route Outer Boundary Slow Route Line 	<p>NATIONAL WIND FACILITY HAZARDS (FAA)</p> <ul style="list-style-type: none"> Met Towers < 200 ft AGL Met Towers > 200 ft AGL Windmills of Unknown Height Windmills < 200 ft AGL Windmills > 200 ft AGL Wind Farm < 200ft AGL Wind Farm > 200ft AGL 	<p>ADMINISTRATIVE FEATURES</p> <ul style="list-style-type: none"> Guard Stations Dispatch Areas Aerial Refuel Routes AR05AV, AR305BV 	<p>The USDA Forest Service makes no warranty as to the accuracy, reliability or completeness of these data for individual or aggregate use with other data. Original data were compiled from various sources. This information may not meet National Map Accuracy Standards. This product was developed through digital means and may be updated without notification.</p> <p>Note: Not all legend items may appear in the map extent.</p>
--	---	---	---	---	---	--	---	--