

# ODF SWO DISTRICT



# 2023 RESOURCE DIRECTORY

# Table of Contents

District Personnel .....	2
District /Unit Organization Charts.....	5
District Personnel ICS Qualifications .....	8
Industry Personnel ICS Qualifications.....	42
Fire/Accident Investigation .....	45
SWO Public Information Officer Pool .....	46
Fire Department Directory .....	47
Federal Agencies.....	51
State Districts / Associations .....	54
Other Cooperators .....	56
Parks .....	60
Circuit Courts .....	61
District Logistics and Supplies List.....	62
Possible Fire Camp Locations .....	70
Ambulance Services / Hospitals .....	72
Airports .....	73
District Fire Cache Supplies / Inventories .....	74

# DISTRICT/MEDFORD UNIT PERSONNEL

**Oregon Department of Forestry ♦ 5286 Table Rock Rd ♦ Central Point ♦ OR ♦ 97502  
Office (541) 664-3328 ♦ Fax (541) 664-4340**

<u>Title</u>	<u>Name</u>	<u>Cell Phone</u>	<u>Home Phone</u>	<u>Radio #</u>
District Forester	Tyler McCarty	630-0757		101
Assist. District Forester	Lee Winslow	621-4110	621-8377	110
Staff Forester	Matt Fumasi	890-7139		102
Communication System Analyst	Tony Seager	971-304-6509		57
Office Manager	Karen Jarratt	660-0606		104
Heavy Equip. Tech	Chris Holmes	621-4106		106
Fire/Protection Planner	Ross Ballou	621-4105		105
Public Information/Prevention Coord.	Natalie Weber	621-4005		103
Prevention Ed. Spec.	Alex Cunha	621-1168	602-0794	147
Forest Practices For. Stewardship Forester	Ben Walen	621-4112		112
Wildland Fire Supervisor	Taylor Wilkerson	621-4120	778-2298	120
Wildland Fire Supervisor	Bill Smith	621-4130	826-8384	130
Wildland Fire Supervisor	Jake Kurzyniec	840-5745		140
Admin. Specialist 1	Curt Snow			
Admin. Specialist 2	Shelley Polacek	630-0268		115
Office Specialist 1	Kristi Welburn	664-3328		116
Equipment Operator		821-9117	664-3767	117
Perm. Forest Officer (Warehouse/Invest.)	Paris Drake	621-4129		129
Stewardship Forester/	Marcus Havniear			113
Tanker Base Mngr.	Harry Kelley	621-4118	430-0981	118
Natural Resource Specialist 2	Kelly Foster	761-3258		146

---

**Medford Dispatch Center**  
**Office (541) 664-1213 ♦ Fax (541) 664-3459**

Wildland Fire Supervisor/ Dispatch	Chelsie Stephens	621-4114	114
Lead Dispatcher	Teresa Burkhart	664-3328	114A

## **GRANTS PASS UNIT PERSONNEL**

**Oregon Department of Forestry ♦ 5375 Monument Drive ♦ Grants Pass ♦ OR ♦ 97526**  
**Office (541) 474-3152 ♦ Fax (541) 474-3158**

<u><b>Title</b></u>	<u><b>Name</b></u>	<u><b>Cell Phone</b></u>	<u><b>Home Phone</b></u>	<u><b>Radio #</b></u>
Assist. District Forester	Brandon Kerns	630-9272		150
Stewardship Forester	George Sheppard	621-4104	670-9712	151
Stewardship Forester	Doug Thackery	761-9690	890-0487	152
District Comm. Tech	Josh Anthony	531-2211	761-224-5	165
Equipment Operator	Don McLaughlin	660-2520	479-6115	153
Admin. Specialist 1	Natalie Wallace		474-3152	
Admin. Specialist 2	Courtney Odom	660-4554	226-8488	159
Office Specialist 1	Suzanne Johnson			155
Wildland Fire Supervisor	Jesse Blair	973-1738		170
Wildland Fire Supervisor		659-2694		180
Wildland Fire Supervisor	Tim Swink	660-0728		190
Forest Officer	Jeff Roberts	951-0984	592-9596	183
Forest Officer	Derreck Johnson	660-0665	660-2792	158
GNA Unit Forester	Chris Rudd	660-0634	450-9912	160
GNA Forester				161
GNA Technician	Nijiel Rocha			163
GNA Technician	Sean Whalen	787-1672	503-987-2351	164
IT/GIS Specialist	John Ferro	821-5496		162

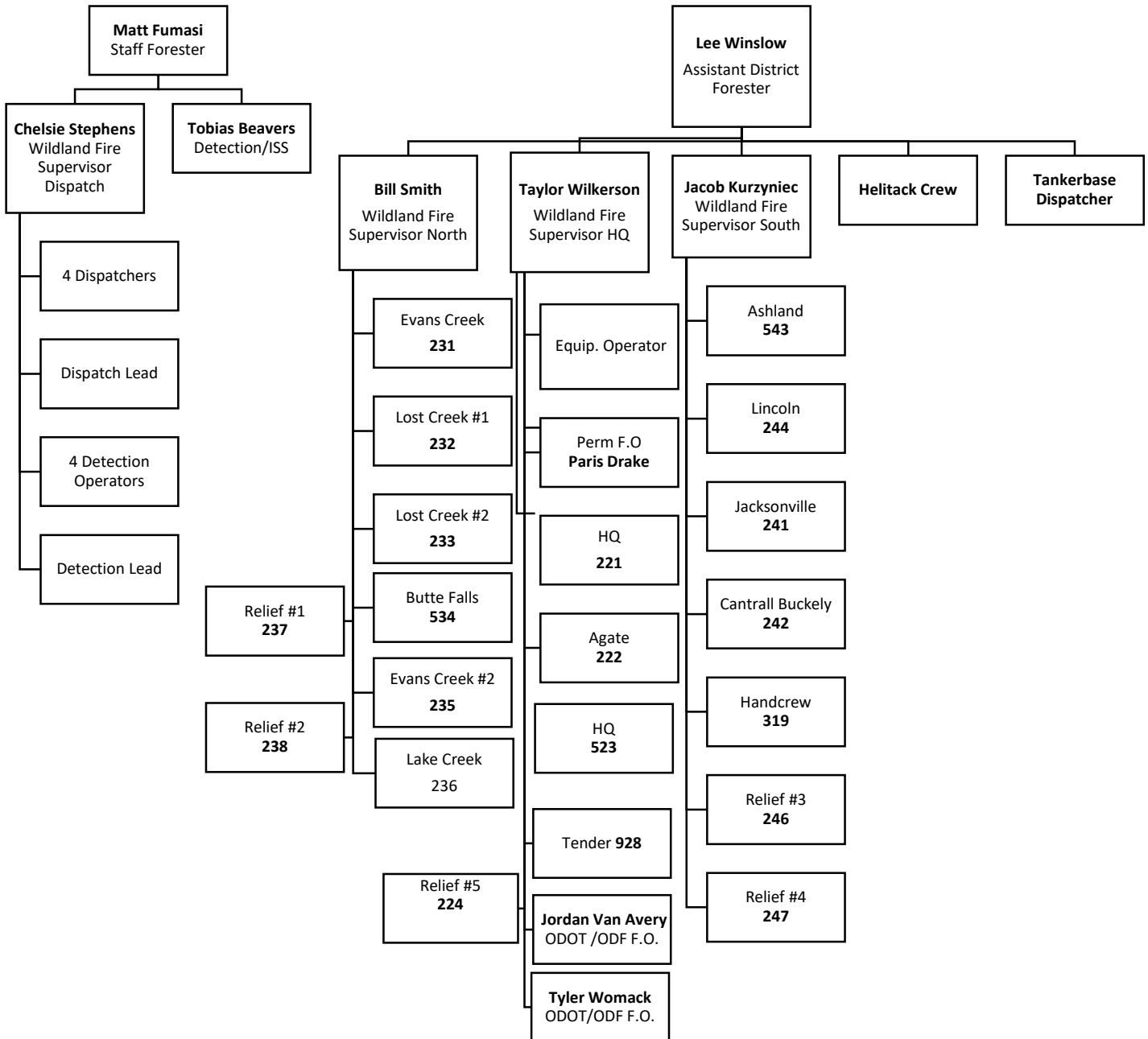
---

**Grants Pass Dispatch Center**  
**Office (541) 471-3883, 471-2855 Aircraft 471-2894 ♦ Fax (541) 471-3892**

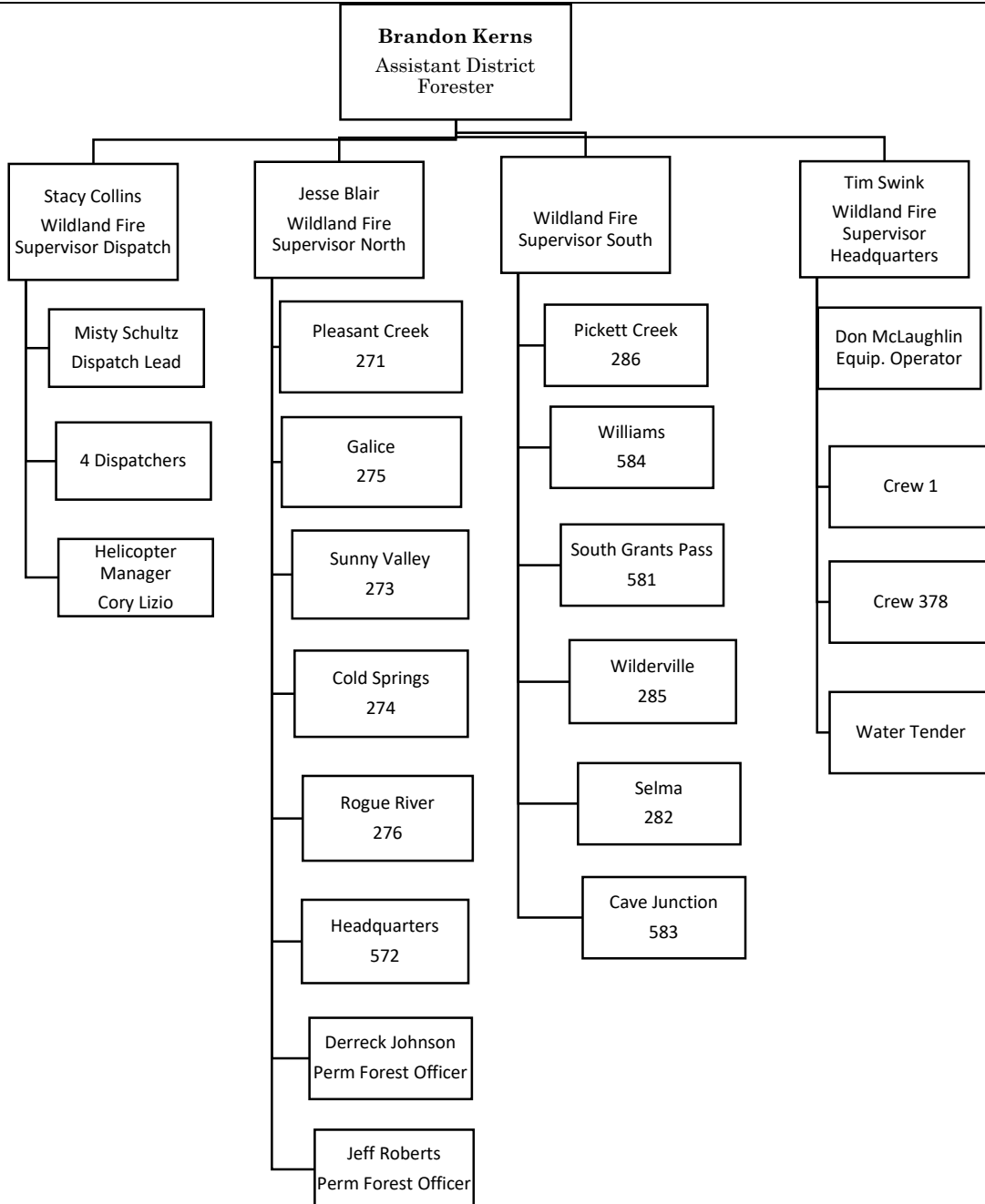
Wildland Fire Supervisor/ Dispatch	Stacy Collins Office Number	660-1197 471-3880	154
Lead Dispatcher	Misty Schultz	471-3882	154A



# Medford Unit Protection Staff



# Grants Pass Unit Protection Staff





## *District Personnel ICS Qualifications*

AADM	TRN	Agency Administrator	FUMASI, MATTHEW	SWO MED
ABRO	JOB	Aircraft Base Radio Operator	FUMASI, MATTHEW	SWO MED
ABRO	TRN	Aircraft Base Radio Operator	MCLAUGHLIN, GAVIN	SWO MED
ABRO	JOB	Aircraft Base Radio Operator	KNIGHT, JASON	SWO MED
ABRO	TRN	Aircraft Base Radio Operator	RIPBERGER, KYLE	SWO MED
ABRO	JOB	Aircraft Base Radio Operator	VAN AVERY, JORDAN	SWO MED
ACDP	JOB	Aircraft Dispatcher	BURKHART, TERESA	SWO MED
ACDP	TRN	Aircraft Dispatcher	COLLINS, STACY N	SWO GP
ACDP	JOB	Aircraft Dispatcher	FUMASI, MATTHEW	SWO MED
ACDP	JOB	Aircraft Dispatcher	OWEN, MARISSA L	SWO GP
ACDP	TRN	Aircraft Dispatcher	SCHULTZ, MISTY	SWO GP
ACDP	TRN	Aircraft Dispatcher	SNOW, CURTIS	SWO MED
ACDP	JOB	Aircraft Dispatcher	STEPHENS, CHELSIE	SWO MED
AOBD	JOB	Air Operations Branch Director	BLAIR, JESSE	SWO GP
AOBD	JOB	Air Operations Branch Director	KELLEY, HARRY	SWO MED
AOBD	JOB	Air Operations Branch Director	WINSLOW, LEE C	SWO MED
AOBS	JOB	Aerial Observer	BLAIR, JESSE	SWO MED
AOBS	TRN	Aerial Observer	FOSTER, KELLY	SWO MED
AOBS	JOB	Aerial Observer	VAN AVERY, JORDAN	SWO MED
APTМ	TRN	Administrative Payment Team Member	MOORE, DANIEL	SWO MED
APTМ	JOB	Administrative Payment Team Member	ODOM, COURTNEY M	SWO GP
APTМ	JOB	Administrative Payment Team Member	POLACEK, SHELLEY K	SWO MED
AREP	TRN	Agency Representative	MCCARTY, TYLER	SWO MED
ASGS	JOB	Air Support Group Supervisor	KELLEY, HARRY	SWO MED
ATBM	JOB	Air Tanker Base Manager	KELLEY, HARRY	SWO MED
ATGS	JOB	Air Tactical Group Supervisor	BLAIR, JESSE	SWO GP

ATGS	JOB	Air Tactical Group Supervisor	JOHNSON, HERB	SWO MED
ATGS	JOB	Air Tactical Group Supervisor	KELLEY, HARRY	SWO MED
ATGS	TRN	Air Tactical Group Supervisor	KERNS, BRANDON J	SWO GP
ATGS	JOB	Air Tactical Group Supervisor	KURZYNIEC, JACOB	SWO MED
ATGS	TRN	Air Tactical Group Supervisor	LIZIO, CORY R	SWO GP
ATGS	TRN	Air Tactical Group Supervisor	VAN AVERY, JORDAN	SWO MED
ATGS	JOB	Air Tactical Group Supervisor	WINSLOW, LEE C	SWO MED
ATVO	JOB	All Terrain Vehicle/Snow Machine Operator	Beavers, Tobias	SWO MED
BCMG	JOB	Base/Camp Manager	RUDD, CHRISTOPHER C	SWO GP
CASC	JOB	Cache Supply Clerk	FOSTER, KELLY S	SWO MED
CASC	JOB	Cache Supply Clerk	RUDD, CHRISTOPHER C	SWO GP
COMP	TRN	Compensation/Claims Unit Leader	JARRATT, KAREN	SWO MED
COMP	TRN	Compensation/Claims Unit Leader	SNOW, CURTIS	SWO MED
COMP	TRN	Compensation /Claims Unit Leader	WALTERS, COURTNEY MARIN	SWO GP
COMT	TRN	Incident Communications Technician	SEAGER, ANTHONY M	SWO MED
CORD	TRN	Expanded Dispatch Coordinator	STEPHENS, CHELSIE	SWO MED
CRNW	JOB	Contract Rep Northwest	KELLEY, HARRY	SWO MED
CRWB	JOB	Crew Boss, Single Resource	BALLOU, ROSS	SWO MED
CRWB	JOB	Crew Boss, Single Resource	BEALL, TARLTON	SWO GP
CRWB	JOB	Crew Boss, Single Resource	BLAIR, JESSE	SWO GP
CRWB	JOB	Crew Boss, Single Resource	BRIGGS, RAYMOND	SWO MED
CRWB	JOB	Crew Boss, Single Resource	Caster, Levi	SWO MED
CRWB	JOB	Crew Boss, Single Resource	CARRIER, IVAN B	SWO GP
CRWB	JOB	Crew Boss, Single Resource	CHALMERS, ROBERT	SWO MED
CRWB	JOB	Crew Boss, Single Resource	CLAYTON, WILLIAM	SWO MED
CRWB	TRN	Crew Boss, Single Resource	Dill, Jeramie	SWO MED
CRWB	JOB	Crew Boss, Single Resource	DRAKE, PARIS	SWO MED
CRWB	TRN	Crew Boss, Single Resource	EASTIN, GREG S	SWO GP
CRWB	TRN	Crew Boss, Single Resource	GRIFFITH, ISIAH D	SWO MED

CRWB	JOB	Crew Boss, Single Resource	GRIMES, KAYL A	SWO MED
CRWB	JOB	Crew Boss, Single Resource	HAVNIEAR, MARCUS	SWO MED
CRWB	JOB	Crew Boss, Single Resource	HUNTLEY, CLINT	SWO MED
CRWB	JOB	Crew Boss, Single Resource	JOHNSON, DERRECK S	SWO GP
CRWB	JOB	Crew Boss, Single Resource	JOHNSON, HERB	SWO MED
CRWB	JOB	Crew Boss, Single Resource	Kazakoff, Larry	SWO MED
CRWB	JOB	Crew Boss, Single Resource	KINNEY, SEAN	SWO MED
CRWB	JOB	Crew Boss, Single Resource	KLING, NELSON	SWO MED
CRWB	JOB	Crew Boss, Single Resource	KNIGHT, JASON	SWO MED
CRWB	JOB	Crew Boss, Single Resource	KURZYNIEC, JACOB	SWO MED
CRWB	TRN	Crew Boss, Single Resource	LANE, CONNOR	SWO MED
CRWB	JOB	Crew Boss, Single Resource	LIZIO, CORY R	SWO GP
CRWB	JOB	Crew Boss, Single Resource	MARASCO, TAYLOR	SWO MED
CRWB	JOB	Crew Boss, Single Resource	MCCARTY, TYLER S	SWO MED
CRWB	TRN	Crew Boss, Single Resource	Miller, Ethan	SWO MED
CRWB	JOB	Crew Boss, Single Resource	MOORE, DANIEL	SWO MED
CRWB	TRN	Crew Boss, Single Resource	PINTO, ANGEL NMN	SWO GP
CRWB	JOB	Crew Boss, Single Resource	RYAN, TIMOTHY P	SWO MED
CRWB	JOB	Crew Boss, Single Resource	SCOTT, JOSHUA	SWO MED
CRWB	JOB	Crew Boss, Single Resource	SMITH, BILLY P	SWO MED
CRWB	JOB	Crew Boss, Single Resource	STEVENS, TATE ELDER	SWO MED
CRWB	TRN	Crew Boss, Single Resource	STRATTON, HUNTER C	SWO GP
CRWB	JOB	Crew Boss, Single Resource	STUDLEY, KEVIN L	SWO GP
CRWB	JOB	Crew Boss, Single Resource	SWINK, TIMOTHY C	SWO GP
CRWB	TRN	Crew Boss, Single Resource	THACKERY, DOUG V	SWO GP
CRWB	JOB	Crew Boss, Single Resource	VAN AVERY, JORDAN	SWO MED
CRWB	JOB	Crew Boss, Single Resource	WALEN, BEN M	SWO MED
CRWB	JOB	Crew Boss, Single Resource	WILKERSON, TAYLOR	SWO MED

CRWB	JOB	Crew Boss, Single Resource	WINSLOW, LEE C	SWO MED
CRWB	JOB	Crew Boss, Single Resource	WOMACK, TYLER B	SWO MED
CRWB	TRN	Crew Boss, Single Resource	WYNDEARO, TRAVIS R	SWO GP
DIVS	JOB	Division Group Supervisor	BLAIR, JESSE	SWO GP
DIVS	TRN	Division Group Supervisor	BRIGGS, RAYMOND	SWO MED
DIVS	JOB	Division Group Supervisor	CARRIER, IVAN B	SWO GP
DIVS	TRN	Division Group Supervisor	DRAKE, PARIS	SWO MED
DIVS	TRN	Division Group Supervisor	FOSTER, KELLY S	SWO MED
DIVS	TRN	Division Group Supervisor	HAVNIEAR, MARCUS	SWO MED
DIVS	JOB	Division Group Supervisor	JOHNSON, DERRECK S	SWO GP
DIVS	JOB	Division Group Supervisor	JOHNSON, HERB	SWO MED
DIVS	JOB	Division Group Supervisor	Kazakoff, Larry	SWO MED
DIVS	JOB	Division Group Supervisor	KELLEY, HARRY	SWO MED
DIVS	JOB	Division Group Supervisor	KERNS, BRANDON J	SWO GP
DIVS	TRN	Division Group Supervisor	KLING, NELSON	SWO MED
DIVS	JOB	Division Group Supervisor	KURZYNIEC, JACOB	SWO MED
DIVS	JOB	Division Group Supervisor	MCCARTY, TYLER S	SWO MED
DIVS	JOB	Division Group Supervisor	MCLAUGHLIN, DON E	SWO GP
DIVS	TRN	Division Group Supervisor	RATHJEN, ROBERT	SWO MED
DIVS	TRN	Division Group Supervisor	RIPBERGER, KYLE	SWO MED
DIVS	TRN	Division Group Supervisor	ROBERTS, JEFFREY T	SWO GP
DIVS	TRN	Division Group Supervisor	SCOTT, JOSHUA	SWO MED
DIVS	JOB	Division Group Supervisor	SMITH, BILLY P	SWO MED
DIVS	TRN	Division Group Supervisor	STUDLEY, KEVIN L	SWO GP
DIVS	JOB	Division Group Supervisor	SWINK, TIMOTHY C	SWO GP
DIVS	JOB	Division Group Supervisor	THACKERY, DOUG V	SWO GP
DIVS	JOB	Division Group Supervisor	VAN AVERY, JORDAN	SWO MED
DIVS	JOB	Division Group Supervisor	WALEN, BEN M	SWO GP
DIVS	JOB	Division Group Supervisor	WILKERSON, TAYLOR	SWO MED
DIVS	JOB	Division Group Supervisor	WINSLOW, LEE C	SWO MED

DIVS	JOB	Division Group Supervisor	WOMACK, TYLER B	SWO MED
DOZB	TRN	Dozer Boss, Single Resource	PINTO, ANGEL	SWO GP
DRCL	TRN	Driver, Commercial License	Kazakoff, Larry	SWO MED
DRIV	JOB	Driver-Operators	Beavers, Tobias	SWO MED
DRIV	JOB	Driver-Operators	CARRIER, IVAN B	SWO GP
DRIV	JOB	Driver-Operators	EASTIN, GREG S	SWO GP
DRIV	JOB	Driver-Operators	FOSTER, KELLY S	SWO MED
DRIV	JOB	Driver-Operators	GRIMES, KAYL A	SWO MED
DRIV	JOB	Driver-Operators	HOLMES, CHRIS M	SWO MED
DRIV	TRN	Driver-Operators	Kazakoff, Larry	SWO MED
DRIV	JOB	Driver-Operators	KERNS, BRANDON J	SWO GP
DRIV	JOB	Driver-Operators	LIZIO, CORY R	SWO GP
DRIV	JOB	Driver-Operators	RICHARDS, CHARLES E	SWO GP
DRIV	JOB	Driver-Operators	SMITH, BILLY P	SWO MED
DRIV	JOB	Driver-Operators	STRATTON, HUNTER C	SWO GP
DZOP	JOB	Dozer Operator	MCLAUGHLIN, DON E	SWO GP
EDRC	JOB	Expanded Dispatch Recorder	BURKHART, TERESA	SWO MED
EDRC	TRN	Expanded Dispatch Recorder	BRYAN, LORI M	SWO GP
EDRC	JOB	Expanded Dispatch Recorder	COLLINS, STACY	SWO MED
EDRC	JOB	Expanded Dispatch Recorder	FUMASI, MATTHEW	SWO MED
EDRC	TRN	Expanded Dispatch Recorder	GERKE, BAILEY	SWO MED
EDRC	TRN	Expanded Dispatch Recorder	LEVITT, BRENDA J	SWO GP
EDRC	TRN	Expanded Dispatach Recorder	MADDOX, SHELBY	SWO MED
EDRC	JOB	Expanded Dispatch Recorder	OWEN, MARISSA	SWO GP
EDRC	JOB	Expanded Dispatch Recorder	SCHULTZ, MISTY	SWO GP
EDRC	TRN	Expanded Dispatch Recorder	SNOW, CURTIS JOHN	SWO MED
EDRC	TRN	Expanded Dispatch Recorder	SORWEIDE, JESSENIA A	SWO GP
EDRC	JOB	Expanded Dispatch Recorder	STEPHENS, CHELSIE	SWO MED
EDSD	TRN	Expanded Dispatch Support Dispatcher	BURKHART, TERESA	SWO MED
EDSD	TRN	Expanded Dispatch Support Dispatcher	COLLINS, STACY N	SWO GP
EDSD	JOB	Expanded Dispatch Support Dispatcher	FUMASI, MATTHEW	SWO MED

EDSD	JOB	Expanded Dispatch Support Dispatcher	STEPHENS, CHELSIE	SWO MED
EDSD	TRN	Expanded Dispatch Support Dispatcher	SNOW, CURTIS	SWO MED
EDSP	JOB	Expanded Dispatch Supervisory Dispatcher	FUMASI, MATTHEW	SWO MED
EDSP	JOB	Expanded Dispatch Supervisory Dispatcher	STEPHENS, CHELSIE	SWO MED
EMT	JOB	Emergency Medical Technician	STUDLEY, KEVIN	SWO GP
EMTB	JOB	Emergency Medical Technician	STUDLEY, KEVIN	SWO GP
EMTP	JOB	Paramedic	KERNS, BRANDON J	SWO GP
ENGB	JOB	Engine Boss, Single Resource	ANOTHONY, PETER	SWO GP
ENGB	JOB	Engine Boss, Single Resource	BALLOU, ROSS	SWO MED
ENGB	JOB	Engine Boss, Single Resource	BEALL, TARLTON L	SWO GP
ENGB	JOB	Engine Boss, Single Resource	BLAIR, JESSE	SWO GP
ENGB	JOB	Engine Boss, Single Resource	BRIGGS, RAYMOND	SWO MED
ENGB	JOB	Engine Boss, Single Resource	CARRIER, IVAN B	SWO GP
ENGB	JOB	Engine Boss, Single Resource	Caster, Levi	
ENGB	JOB	Engine Boss, Single Resource	CHALMERS, ROBERT	SWO MED
ENGB	JOB	Engine Boss, Single Resource	CLAYTON, WILLIAM	SWO MED
ENGB	TRN	Engine Boss, Single Resource	DERRICK, CODY JAMES	SWO MED
ENGB	TRN	Engine Boss, Single Resource	CUTILLO, JACOB M	SWO GP
ENGB	JOB	Engine Boss, Single Resource	DRAKE, PARIS	SWO MED
ENGB	JOB	Engine Boss, Single Resource	EASTIN, GREG S	SWO GP
ENGB	JOB	Engine Boss, Single Resource	FOSTER, KELLY S	SWO MED
ENGB	TRN	Engine Boss, Single Resource	FUMASI, MATTHEW	SWO MED
ENGB	TRN	Engine Boss, Single Resource	GRIFFITH, ISAIAH	SWO MED
ENGB	JOB	Engine Boss, Single Resource	GRIMES, KAYL A	SWO MED
ENGB	TRN	Engine Boss, Single Resource	GROSSMAN, ANDREW SPENCER	SWO MED
ENGB	TRN	Engine Boss, Single Resource	HERRERA JR, HECTOR	SWO GP
ENGB	TRN	Engine Boss, Single Resource	HERTLER, JESSE L	SWO GP
ENGB	TRN	Engine Boss, Single Resource	HINTHORNE, DEVIN T	SWO GP
ENGB	JOB	Engine Boss, Single Resource	HOLMES, CHRIS M	SWO MED
ENBG	JOB	Engine Boss, Single Resource	HUNTLEY, CLINT	SWO MED
ENGB	JOB	Engine Boss, Single Resource	JOHNSON, DERRECK S	SWO GP

ENGB	JOB	Engine Boss, Single Resource	JOHNSON, HERB	SWO MED
ENGB	JOB	Engine Boss, Single Resource	Kazakoff, Larry	SWO MED
ENGB	JOB	Engine Boss, Single Resource	KELLEY, HARRY	SWO MED
ENGB	JOB	Engine Boss, Single Resource	KERNS, BRANDON J	SWO GP
ENGB	JOB	Engine Boss, Single Resource	KINNEY, SEAN	SWO MED
ENGB	JOB	Engine Boss, Single Resource	KNIGHT, JASON	SWO MED
ENGB	JOB	Engine Boss, Single Resource	KLING, NELSON	SWO MED
ENGB	JOB	Engine Boss, Single Resource	KURZYNIEC, JACOB	SWO MED
ENGB	TRN	Engine Boss, Single Resource	LANE, CONNOR	SWO MED
ENGB	JOB	Engine Boss, Single Resource	LARSON, DAVID M	SWO MED
ENGB	JOB	Engine Boss, Single Resource	LIZIO, CORY R	SWO GP
ENGB	JOB	Engine Boss, Single Resource	LOPEZ, ADRIAN	SWO GP
ENGB	JOB	Engine Boss, Single Resource	MARASCO, TAYLOR	SWO MED
ENGB	JOB	Engine Boss, Single Resource	MCCARTY, TYLER S	SWO MED
ENGB	TRN	Engine Boss, Single Resource	MCLAUGHLIN, GAVIN	SWO MED
ENGB	JOB	Engine Boss, Single Resource	MOORE, DANIEL	SWO MED
ENGB	TRN	Engine Boss, Single Resource	PINTO, ANGEL	SWO GP
ENGB	TRN	Engine Boss, Single Resource	RICHARDS, CHARLES E	SWO GP
ENGB	TRN	Engine Boss, Single Resource	ROBERTS, JEFFREY T	SWO GP
ENGB	JOB	Engine Boss, Single Resource	RYAN, TIMOTHY P	SWO MED
ENGB	JOB	Engine Boss, Single Resource	SCOTT, JOSHUA	SWO MED
ENGB	JOB	Engine Boss, Single Resource	SMITH, BILLY P	SWO MED
ENGB	TRN	Engine Boss, Single Resource	STEVENS, TATE ELDER	SWO MED
ENGB	TRN	Engine Boss, Single Resource	STRANDQUIST, PAUL I	SWO GP
ENGB	JOB	Engine Boss, Single Resource	STRATTON, HUNTER C	SWO GP
ENGB	JOB	Engine Boss, Single Resource	STUDLEY, KEVIN	SWO GP
ENGB	JOB	Engine Boss, Single Resource	SWINK, TIMOTHY C	SWO GP
ENGB	JOB	Engine Boss, Single Resource	VAN AVERY, JORDAN	SWO MED
ENGB	JOB	Engine Boss, Single Resource	WALEN, BEN M	SWO MED
ENGB	JOB	Engine Boss, Single Resource	WILKERSON, TAYLOR	SWO MED

ENGB	JOB	Engine Boss, Single Resource	WINSLOW, LEE C	SWO MED
ENGB	JOB	Engine Boss, Single Resource	WOMACK, TYLER B	SWO MED
ENGB	JOB	Engine Boss, Single Resource	WYNDEARO, TRAVIS R	SWO GP
ENOP	JOB	Engine Operator	CARRIER, IVAN B	SWO GP
ENOP	JOB	Engine Operator	DRAKE, PARIS	SWO MED
ENOP	JOB	Engine Operator	EASTIN, GREG S	SWO GP
ENOP	JOB	Engine Operator	FOSTER, KELLY S	SWO MED
ENOP	JOB	Engine Operator	HOLMES, CHRIS M	SWO MED
ENOP	JOB	Engine Operator	JOHNSON, HERB	SWO MED
ENOP	JOB	Engine Operator	Kazakoff, Larry	SWO MED
ENOP	JOB	Engine Operator	LIZIO, CORY R	SWO GP
ENOP	JOB	Engine Operator	RICHARDS, CHARLES E	SWO GP
ENOP	JOB	Engine Operator	STRATTON, HUNTER C	SWO GP
ENOP	JOB	Engine Operator	SWINK, TIMOTHY C	SWO GP
ENOP	JOB	Engine Operator	WALEN, BEN M	SWO MED
ENOP	JOB	Engine Operator	WYNDEARO, TRAVIS R	SWO GP
EQPM	TRN	Equipment Manager	HOLMES, CHRIS	SWO MED
EQPM	TRN	Equipment Manager	ROCHA, NIJIEL E	SWO GP
EQPM	JOB	Equipment Manager	RUDD, CHRISTOPHER C	SWO GP
EQTR	TRN	Equipment Time Recorder	COLLINS, STACY	SWO GP
EQTR	TRN	Equipment Time Recorder	JARRATT, KAREN	SWO MED
EQTR	JOB	Equipment Time Recorder	ODOM, COURTNEY	SWO GP
EQTR	JOB	Equipment Time Recorder	POLACEK, SHELLEY K	SWO MED
EQTR	TRN	Equipment Time Recorder	SNOW, CURTIS	SWO MED
EQTR	JOB	Equipment Time Recorder	WALLACE, NATALIE	SWO GP
FACL	TRN	Facilities Unit Leader	HOLMES, CHRIS M	SWO MED
FACL	JOB	Facilities Unit Leader	RUDD, CHRISTOPHER C	SWO GP
FAL1	JOB	Advanced Faller	BLAIR, JESSE	SWO GP
FAL1	JOB	Advanced Faller	BRIGGS, RAYMOND	SWO MED
FAL1	JOB	Advanced Faller	Kazakoff, Larry	SWO MED
FAL1	JOB	Advanced Faller	MCLAUGHLIN, DON E	SWO GP
FAL1	JOB	Advanced Faller	Rathjen, Robert	SWO MED



FAL1	JOB	Advanced Faller	SMITH, BILLY P	SWO MED
FAL2	JOB	Intermediate Faller	ANTHONY, PETER JOSEPH	SWO MED
FAL2	JOB	Intermediate Faller	BLAIR, JESSE	SWO MED
FAL2	JOB	Intermediate Faller	BRIGGS, RAYMOND	SWO MED
FAL2	JOB	Intermediate Faller	FOSTER, KELLY S	SWO MED
FAL2	JOB	Intermediate Faller	JOHNSON, DERRECK S	SWO GP
FAL2	JOB	Intermediate Faller	Kazakoff, Larry	SWO MED
FAL2	JOB	Intermediate Faller	KERNS, BRANDON	SWO GP
FAL2	JOB	Intermediate Faller	KLING, NELSON	SWO MED
FAL2	JOB	Intermediate Faller	KURZYNIEC, JACOB	SWO MED
FAL2	JOB	Intermediate Faller	MOORE, DANIEL	SWO MED
FAL2	JOB	Intermediate Faller	SMITH, BILLY P	SWO MED
FAL2	JOB	Intermediate Faller	SWINK, TIMOTHY C	SWO GP
FAL2	JOB	Intermediate Faller	WILKERSON, TAYLOR	SWO MED
FAL2	JOB	Intermediate Faller	WINSLOW, LEE C	SWO MED
FAL3	JOB	Basic Faller	ANTHONY, PETER JOSEPH	SWO MED
FAL3	JOB	Basic Faller	HOLMES, CHRIS M	SWO MED
FAL3	JOB	Basic Faller	KERNS, BRANDON	SWO GP
FAL3	JOB	Basic Faller	KNIGHT, JASON	SWO MED
FAL3	JOB	Basic Faller	RICHARDS, CHARLES E	SWO GP
FAL3	JOB	Basic Faller	RIPBERGER, KYLE	SWO MED
FAL3	JOB	Basic Faller	RUDD, CHRISTOPHER C	SWO GP
FAL3	JOB	Basic Faller	WYNDEARO, TRAVIS R	SWO GP
FALA	JOB	Faller Class A	RIPBERGER, KYLE	SWO MED
FALB	JOB	Faller Class B	HUNTLEY, CLINT	SWO MED
FALB	JOB	Faller Class B	JOHNSON, HERB	SWO MED
FALB	JOB	Faller Class B	KELLEY, HARRY	SWO MED
FALB	JOB	Faller Class B	MCCARTY, TYLER S	SWO MED

FALB	JOB	Faller Class B	WINSLOW, LEE C	SWO MED
FALC	JOB	Faller Class C	Rathjen, Robert	SWO MED
FALC	TRN	Faller Class C	SHEPPARD, GEORGE E	SWO GP
FDUL	TRN	Food Unit Leader	HOMLES, CHRIS	SWO MED
FELB	TRN	Felling Boss, Single Resource	ANTHONY, PETER JOSEPH	SWO GP
FELB	JOB	Felling Boss, Single Resource	BALLOU, ROSS	SWO MED
FELB	JOB	Felling Boss, Single Resource	BEALL, TARLTON	SWO GP
FELB	JOB	Felling Boss, Single Resource	BLAIR, JESSE	SWO GP
FELB	JOB	Felling Boss, Single Resource	BRIGGS, RAYMOND	SWO MED
FELB	JOB	Felling Boss, Single Resource	Caster, Levi	SWO MED
FELB	JOB	Felling Boss, Single Resource	CARRIER, IVAN B	SWO GP
FELB	JOB	Felling Boss, Single Resource	CHALMERS, ROBERT	SWO MED
FELB	JOB	Felling Boss, Single Resource	CLAYTON, WILLIAM	SWO MED
FELB	TRN	Felling Boss, Single Resource	CUTILLO, JACOB M	SWO GP
FELB	TRN	Felling Boss, Single Resource	Dill, Jeramie	SWO MED
FELB	JOB	Felling Boss, Single Resource	DRAKE, PARIS	SWO MED
FELB	TRN	Felling Boss, Single Resource	EASTIN, GREG S	SWO GP
FELB	JOB	Felling Boss, Single Resource	FOSTER, KELLY S	SWO MED
FELB	TRN	Felling Boss, Single Resource	GRIFFITH, ISAIAH	SWO MED
FELB	JOB	Felling Boss, Single Resource	GRIMES, KAYL A	SWO MED
FELB	JOB	Felling Boss, Single Resource	HAVNIEAR, MARCUS	SWO MED
FELB	JOB	Felling Boss, Single Resource	HUNTLEY, CLINT	SWO MED
FELB	JOB	Felling Boss, Single Resource	JOHNSON, DERRECK S	SWO GP
FELB	JOB	Felling Boss, Single Resource	JOHNSON, HERB	SWO MED
FELB	JOB	Felling Boss, Single Resource	Kazakoff, Larry	SWO MED
FELB	JOB	Felling Boss, Single Resource	KELLEY, HARRY	SWO MED
FELB	JOB	Felling Boss, Single Resource	KERNS, BRANDON J	SWO GP
FELB	JOB	Felling Boss, Single Resource	KINNEY, SEAN	SWO MED
FELB	JOB	Felling Boss, Single Resource	KLING, NELSON	SWO MED

FELB	JOB	Felling Boss, Single Resource	KNIGHT, JASON	SWO MED
FELB	JOB	Felling Boss, Single Resource	KURZYNIEC, JACOB	SWO MED
FELB	TRN	Felling Boss, Single Resource	LANE, CONNOR	SWO MED
FELB	JOB	Felling Boss, Single Resource	MARASCO, TAYLOR	SWO MED
FELB	JOB	Felling Boss, Single Resource	MCLAUGHLIN, DON E	SWO GP
FELB	TRN	Felling Boss, Single Resource	MCLAUGHLIN, GAVIN	SWO MED
FELB	JOB	Felling Boss, Single Resource	MOORE, DANIEL	SWO MED
FELB	JOB	Felling Boss, Single Resource	Rathjen, Robert	SWO MED
FELB	JOB	Felling Boss, Single Resource	RIPBERGER, KYLE	SWO MED
FELB	JOB	Felling Boss, Single Resource	RYAN, TIMOTHY P	SWO MED
FELB	JOB	Felling Boss, Single Resource	SCOTT, JOSHUA	SWO MED
FELB	JOB	Felling Boss, Single Resource	SMITH, BILLY P	SWO MED
FELB	TRN	Felling Boss, Single Resource	Sollinger, Griffin	SWO MED
FELB	JOB	Felling Boss, Single Resource	STEVENS, TATE ELDER	SWO MED
FELB	JOB	Felling Boss, Single Resource	THACKERY, DOUG V	SWO GP
FELB	JOB	Felling Boss, Single Resource	VAN AVERY, JORDAN	SWO MED
FELB	TRN	Felling Boss, Single Resource	WALEN, BEN M	SWO MED
FELB	JOB	Felling Boss, Single Resource	WILKERSON, TAYLOR	SWO MED
FELB	JOB	Felling Boss, Single Resource	WINSLOW, LEE C	SWO MED
FELB	JOB	Felling Boss, Single Resource	WOMACK, TYLER B	SWO MED
FELB	JOB	Felling Boss, Single Resource	WYNDEARO, TRAVIS R	SWO GP
FEMO	TRN	Fire Effects Monitor	Rathjen, Robert	SWO MED
FFT1	TRN	Firefighter Type 1	ANTHONY, PETER JOSEPH	SWO GP
FFT1	TRN	Firefighter Type 1	ACEVEDO, JEARIHM E	SWO GP
FFT1	JOB	Firefighter Type 1	BALLOU, ROSS	SWO MED
FFT1	TRN	Firefighter Type 1	BARRY, BRANDON	SWO GP
FFT1	TRN	Firefighter Type 1	BEALL, TARLTON	SWO GP
FFT1	JOB	Firefighter Type 1	Beavers, Tobias	SWO MED

FFT1	TRN	Firefighter Type 1	BOND, ELIAS	SWO GP
FFT1	TRN	Firefighter Type 1	BRANCH, KJERSTEN A	SWO GP
FFT1	JOB	Firefighter Type 1	BRIGGS, RAYMOND	SWO MED
FFT1	JOB	Firefighter Type 1	CARRIER, IVAN B	SWO GP
FFT1	JOB	Firefighter Type 1	Caster, Levi	SWO MED
FFT1	JOB	Firefighter Type 1	CHALMERS, ROBERT	SWO MED
FFT1	TRN	Firefighter Type 1	CHENOWITH, TRISTAN	SWO MED
FFT1	JOB	Firefighter Type 1	Christensen, Kabb	SWO MED
FFT1	JOB	Firefighter Type 1	CLAYTON, WILLIAM	SWO MED
FFT1	TRN	Firefighter Type 1	Cunha, Alex	SWO MED
FFT1	TRN	Firefighter Type 1	CUTILLO, JACOB M	SWO GP
FFT1	TRN	Firefighter Type 1	DERRICK, CODY JAMES	SWO MED
FFT1	JOB	Firefighter Type 1	Dill, Jeramie	SWO MED
FFT1	JOB	Firefighter Type 1	DRAKE, PARIS	SWO MED
FFT1	JOB	Firefighter Type 1	EASTIN, GREG S	SWO GP
FFT1	TRN	Firefighter Type 1	ENGLISH, CALEB JAMES	SWO MED
FFT1	TRN	Firefighter Type 1	ETHERIDGE, CANYON J	SWO GP
FFT1	JOB	Firefighter Type 1	FOSTER, KELLY S	SWO MED
FFT1	JOB	Firefighter Type 1	FUMASI, MATTHEW	SWO MED
FFT1	JOB	Firefighter Type 1	GRIFFITH, ISAIAH DAVID	SWO MED
FFT1	JOB	Firefighter Type 1	GRIMES, KAYL A	SWO MED
FFT1	JOB	Firefighter Type 1	GROSSMAN, ANDREW	SWO MED
FFT1	JOB	Firefighter Type 1	HAVNIEAR, MARCUS	SWO MED
FFT1	TRN	Firefighter Type 1	HERICNKX, ANDREW	SWO MED
FFT1	JOB	Firefighter Type 1	HERRERA JR, HECTOR	SWO GP
FFT1	JOB	Firefighter Type 1	HERTLER, JESSE L	SWO GP
FFT1	TRN	Firefighter Type 1	HINTHORNE, DEVIN T	SWO GP
FFT1	TRN	Firefighter Type 1	HITCHCOCK, JACOB	SWO MED

FFT1	JOB	Firefighter Type 1	HOLMES, CHRIS M	SWO MED
FFT1	JOB	Firefighter Type 1	HUNTLEY, CLINT	SWO MED
FFT1	JOB	Firefighter Type 1	JOHNSON, DERRECK S	SWO GP
FFT1	JOB	Firefighter Type 1	JOHNSON, HERB	SWO MED
FFT1	JOB	Firefighter Type 1	Kazakoff, Larry	SWO MED
FFT1	JOB	Firefighter Type 1	KELLEY, HARRY	SWO MED
FFT1	JOB	Firefighter Type 1	KERNS, BRANDON J	SWO GP
FFT1	JOB	Firefighter Type 1	KINNEY, SEAN M	SWO MED
FFT1	JOB	Firefighter Type 1	KLING, NELSON	SWO MED
FFT1	JOB	Firefighter Type 1	KNIGHT, JASON DAVID	SWO MED
FFT1	JOB	Firefighter Type 1	KURZYNIEC, JACOB	SWO MED
FFT1	JOB	Firefighter Type 1	LANE, CONNOR	SWO MED
FFT1	JOB	Firefighter Type 1	LIZIO, CORY R	SWO GP
FFT1	JOB	Firefighter Type 1	LOPEZ, ADRIAN	SWO GP
FFT1	JOB	Firefighter Type 1	MARASCO, TAYLOR	SWO MED
FFT1	JOB	Firefighter Type 1	MCCARTY, TYLER S	SWO GP
FFT1	TRN	Firefighter Type 1	MCGUIRE, CONNOR L	SWO GP
FFT1	JOB	Firefighter Type 1	MCLAUGHLIN, GAVIN	SWO MED
FFT1	TRN	Firefighter Type 1	Miles, Jeremy	SWO MED
FFT1	JOB	Firefighter Type 1	MOORE, DANIEL	SWO MED
FFT1	JOB	Firefighter Type 1	PINTO, ANGEL NMN	SWO GP
FFT1	JOB	Firefighter Type 1	Rathjen, Robert	SWO MED
FFT1	JOB	Firefighter Type 1	RICHARDS, CHARLES E	SWO GP
FFT1	JOB	Firefighter Type 1	RIPBERGER, KYLE	SWO MED
FFT1	TRN	Firefighter Type 1	ROCHA, NIJIEL E	SWO GP
FFT1	JOB	Firefighter Type 1	ROBERTS, JEFFREY T	SWO GP
FFT1	JOB	Firefighter Type 1	RYAN, TIMOTHY P	SWO MED
FFT1	JOB	Firefighter Type 1	SCHULTZ, CHRISTOPHER	SWO GP
FFT1	JOB	Firefighter Type 1	SCOTT, JOSHUA	SWO MED
FFT1	JOB	Firefighter Type 1	SHEPPARD, GEORGE E	SWO GP

FFT1	JOB	Firefighter Type 1	SMITH, BILLY P	SWO MED
FFT1	JOB	Firefighter Type 1	Sollinger, Griffin	SWO MED
FFT1	JOB	Firefighter Type 1	SORWEIDE, COLTON	SWO GP
FFT1	JOB	Firefighter Type 1	STEPHENS, CHELSIE	SWO MED
FFT1	JOB	Firefighter Type 1	STEVENS, TATE ELDER	SWO MED
FFT1	JOB	Firefighter Type 1	STRANDQUIST, BRANDON	SWO GP
FFT1	TRN	Firefighter Type 1	STRANDQUIST, JUSTIN R	SWO GP
FFT1	JOB	Firefighter Type 1	STRATTON, HUNTER C	SWO GP
FFT1	TRN	Firefighter Type 1	STUDLEY, KEVIN	SWO GP
FFT1	JOB	Firefighter Type 1	SWINK, TIMOTHY C	SWO GP
FFT1	JOB	Firefighter Type 1	THACKERY, DOUG V	SWO GP
FFT1	JOB	Firefighter Type 1	VAN AVERY, JORDAN	SWO MED
FFT1	JOB	Firefighter Type 1	WALEN, BEN M	SWO MED
FFT1	JOB	Firefighter Type 1	WILKERSON, TAYLOR	SWO MED
FFT1	JOB	Firefighter Type 1	WINSLOW, LEE C	SWO MED
FFT1	TRN	Firefighter Type 1	WOLFF, JARED	SWO GP
FFT1	JOB	Firefighter Type 1	WOMACK, TYLER B	SWO MED
FFT1	JOB	Firefighter Type 1	WYNDEARO, TRAVIS R	SWO GP
FFT1	JOB	Firefighter Type 1	YARR, JOSH D	SWP GP
FFT1	TRN	Firefighter Type 1	ZEHE, BLAKE J	SWO GP
FFT2	JOB	Firefighter Type 2	ACEVEDO, JEARIHM E	SWO GP
FFT2	JOB	Firefighter Type 2	ANTHONY, PETER JOSEPH	SWO MED
FFT2	JOB	Firefighter Type 2	BALLOU, ROSS	SWO MED
FFT2	JOB	Firefighter Type 2	BARRY, BRANDON	SWO GP
FFT2	JOB	Firefighter Type 2	BEALL, TARLTON	SWO GP
FFT2	JOB	Firefighter Type 2	Beavers, Tobias	SWO MED
FFT2	JOB	Firefighter Type 2	BOND, ELIAS H	SWO GP
FFT2	JOB	Firefighter Type 2	BRANCH, KJERSTEN A	SWP GP
FFT2	JOB	Firefighter Type 2	BRIGGS, RAYMOND	SWO MED
FFT2	JOB	Firefighter Type 2	BUCKMASTER, ISAAC W	SWO GP
FFT2	JOB	Firefighter Type 2	BURKHART, DOUGLAS	SWO MED
FFT2	JOB	Firefighter Type 2	CHALMERS, ROBERT	SWO MED

FFT2	JOB	Firefighter Type 2	CROSS, CLAYTON	SWO GP
FFT2	JOB	Firefighter Type 2	CUTILLO, JACOB M	SWO GP
FFT2	JOB	Firefighter Type 2	DERRICK, CODY JAMES	SWO MED
FFT2	JOB	Firefighter Type 2	DRAKE, PARIS	SWO MED
FFT2	JOB	Firefighter Type 2	EASTIN, GREG S	SWO GP
FFT2	JOB	Firefighter Type 2	ENGLISH, CALEB JAMES	SWO MED
FFT2	JOB	Firefighter Type 2	FERRELL, LUCAS D	SWO GP
FFT2	JOB	Firefighter Type 2	FOSTER, KELLY S	SWO MED
FFT2	JOB	Firefighter Type 2	FUMASI, MATTHEW	SWO MED
FFT2	JOB	Firefighter Type 2	GRIFFITH, ISAIAH DAVID	SWO MED
FFT2	JOB	Firefighter Type 2	GRIMES, KAYL A	SWO MED
FFT2	JOB	Firefighter Type 2	HERINCKX, ANDREW	SWO MED
FFT2	JOB	Firefighter Type 2	HERRERA JR, HECTOR	SWO GP
FFT2	JOB	Firefighter Type 2	HERTLER, JESSE L	SWO GP
FFT2	JOB	Firefighter Type 2	HINTHORNE, DEVIN T	SWO GP
FFT2	JOB	Firefighter Type 2	HITCHCOCK, JACOB M	SWO MED
FFT2	JOB	Firefighter Type 2	HOLMES, CHRIS M	SWO MED
FFT2	JOB	Firefighter Type 2	HUNTLEY, CLINT	SWO MED
FFT2	JOB	Firefighter Type 2	Kazakoff, Larry	SWO MED
FFT2	JOB	Firefighter Type 2	KERNS, BRANDON J	SWO GP
FFT2	JOB	Firefighter Type 2	KINNEY, SEAN M	SWO MED
FFT2	JOB	Firefighter Type 2	KLING, NELSON	SWO MED
FFT2	JOB	Firefighter Type 2	KNIGHT, JASON	SWO MED
FFT2	JOB	Firefighter Type 2	KURZYNIEC, JACOB	SWO MED
FFT2	JOB	Firefighter Type 2	LANE, CONNOR	SWO MED
FFT2	JOB	Firefighter Type 2	LARKIN, SKYLER L	SWO GP
FFT2	JOB	Firefighter Type 2	LIZIO, CORY R	SWO GP
FFT2	JOB	Firefighter Type 2	LOPEZ, ADRIAN NMN	SWO GP
FFT2	JOB	Firefighter Type 2	MARASCO, TAYLOR	SWO MED
FFT2	JOB	Firefighter Type 2	MCCARTY, TYLER S	SWO GP
FFT2	JOB	Firefighter Type 2	MCGUIRE, CONNOR L	SWO GP

FFT2	JOB	Firefighter Type 2	MELTON, RICH S	SWO GP
FFT2	JOB	Firefighter Type 2	MILLER, LEO J	SWO GP
FFT2	JOB	Firefighter Type 2	MOORE, DANIEL	SWO MED
FFT2	JOB	Firefighter Type 2	PINTO, ANGEL NMN	SWO GP
FFT2	JOB	Firefighter Type 2	Rathjen, Robert	SWO MED
FFT2	JOB	Firefighter Type 2	RICHARDS, CHARLES E	SWO GP
FFT2	JOB	Firefighter Type 2	RIPBERGER, KYLE	SWO MED
FFT2	JOB	Firefighter Type 2	ROBERTS, JEFFREY T	SWO GP
FFT2	JOB	Firefighter Type 2	ROCHA, NIJIEL E	SWO GP
FFT2	JOB	Firefighter Type 2	ROUSH, SCOTT W	SWO GP
FFT2	JOB	Firefighter Type 2	RYAN, TIMOTHY P	SWO MED
FFT2	JOB	Firefighter Type 2	SCHULTZ, CHRISTOPHER	SWO GP
FFT2	JOB	Firefighter Type 2	SCOTT, JOSHUA	SWO MED
FFT2	JOB	Firefighter Type 2	SMITH, BILLY P	SWO MED
FFT2	JOB	Firefighter Type 2	SOMMERS, MAHKALA R	SWO GP
FFT2	JOB	Firefighter Type 2	SORWEIDE, COLTON	SWO GP
FFT2	JOB	Firefighter Type 2	STEVENS, TATE ELDER	SWO MED
FFT2	JOB	Firefighter Type 2	STRANDQUIST, BRANDON M	SWO GP
FFT2	JOB	Firefighter Type 2	STRANDQUIST, JUSTIN R	SWO GP
FFT2	JOB	Firefighter Type 2	STRATTON, HUNTER C	SWO GP
FFTE	JOB	Firefighter Type 2	STUDLEY, KEVIN L	SWO GP
FFT2	JOB	Firefighter Type 2	TEUNISSEN, THEODORE	SWO GP
FFT2	JOB	Firefighter Type 2	VAN AVERY, JORDAN	SWO MED
FFT2	JOB	Firefighter Type 2	WALEN, BEN M	SWO GP
FFT2	JOB	Firefighter Type 2	WILKERSON, TAYLOR	SWO MED
FFT2	JOB	Firefighter Type 2	WINSLOW, LEE C	SWO MED
FFT2	JOB	Firefighter Type 2	WOLFF, JARED	SWO GP
FFT2	JOB	Firefighter Type 2	WOMACK, TYLER B	SWO MED
FFT2	JOB	Firefighter Type 2	WYNDEARO, TRAVIS R	SWO GP
FFT2	JOB	Firefighter Type 2	YARR, JOSH	SWO GP
FFT2	TRN	Firefighter Type 2	ZEHE, BLAKE	SWO GP
FINV	TRN	Fire Investigator	SWINK, TIMOTHY C	SWO GP
FIRB	JOB	Firing Boss, Single Resource	BLAIR, JESSE	SWO GP
FIRB	JOB	Firing Boss, Single Resource	CARRIER, IVAN B	SWO GP
FIRB	JOB	Firing Boss, Single Resource	JOHNSON, DERRECK S	SWO GP



FIRB	JOB	Firing Boss, Single Resource	JOHNSON, HERB	SWO MED
FIRB	JOB	Firing Boss, Single Resource	Kazakoff, Larry	SWO MED
FIRB	TRN	Firing Boss, Single Resource	KINNEY, SEAN	SWO MED
FIRB	TRN	Firing Boss, Single Resource	RAFFAELLY, PHILLIP	SWO GP
FIRB	JOB	Firing Boss, Single Resource	Rathjen, Robert	SWO MED
FIRB	JOB	Firing Boss, Single Resource	SMITH, BILLY P	SWO MED
FIRB	JOB	Firing Boss, Single Resource	WILKERSON, TAYLOR	SWO MED
FIRB	TRN	Firing Boss, Single Resource	WINSLOW, LEE C	SWO MED
FIT2	JOB	Fire Investigator - District	BLAIR, JESSE	SWO GP
FIT2	JOB	Fire Investigator – District	JOHNSON, DERRECK S	SWO GP
FIT2	JOB	Fire Investigator - District	KELLEY, HARRY	SWO MED
FIT2	JOB	Fire Investigatpr – District	KERNS, BRANDON	SWO GP
FIT2	JOB	Fire Investigator - District	SMITH, BILLY P	SWO MED
FIT2	JOB	Fire Investigator - District	WINSLOW, LEE C	SWO MED
FIT3	JOB	Fire Investigator - Initial Attack	CARRIER, IVAN B	SWO GP
FIT3	JOB	Fire Investigator - Initial Attack	HOLMES, CHRIS M	SWO MED
FIT3	JOB	Fire Investigator - Initial Attack	JOHNSON, DERRECK S	SWO GP
FIT3	JOB	Fire Investigator - Initial Attack	KELLEY, HARRY	SWO MED
FIT3	JOB	Fire Investigator – Initial Attack	KERNS, BRANDON J	SWO GP
FIT3	JOB	Fire Investigator - Initial Attack	MCCARTY, TYLER S	SWO MED
FIT3	JOB	Fire Investigator - Initial Attack	PRYTS, JOE R	SWO GP
FIT3	JOB	Fire Investigator - Initial Attack	SMITH, BILLY P	SWO MED
FIT3	JOB	Fire Investigator - Initial Attack	STRATTON, HUNTER C	SWO GP
FIT3	JOB	Fire Investigator - Initial Attack	SWINK, TIMOTHY C	SWO GP
FSC3	TRN	Finance Section Chief Type 3	ODOM, COURTNEY	SWO GP
FWCA	JOB	Fire Warden Class A	KELLEY, HARRY	SWO MED
FWPT	JOB	Fixed Wing Parking Tender	BLAIR, JESSE	SWO GP
FWPT	JOB	Fixed Wing Parking Tender	KELLEY, HARRY	SWO MED
FWPT	JOB	Fixed Wing Parking Tender	WINSLOW, LEE C	SWO MED
GISS	TRN	Geographic Information System Specialist	ROCHA, NIJIEL	SWO GP
GSUL	JOB	Ground Support Unit Leader	RUDD, CHRISTOPHER C	SWO GP

GSUL	TRN	Ground Support Unit Leader	HOLMES, CHRIS	SWO MED
HEB1	TRN	Helibase Manager Type 1	BLAIR, JESSE	SWO GP
HEB1	TRN	Helibase Manager Type 1	FOSTER, KELLY S	SWO MED
HEB1	TRN	Helibase Manager Type 1	WINSLOW, LEE C	SWO MED
HEB2	JOB	Helibase Manager Type 2	BLAIR, JESSE	SWO GP
HEB2	JOB	Helibase Manager Type 2	FOSTER, KELLY S	SWO MED
HEB2	JOB	Helibase Manager Type 2	KELLEY, HARRY	SWO MED
HEB2	TRN	Helibase Manager Type 2	WILKERSON, TAYLOR	SWO MED
HEB2	JOB	Helibase Manager Type 2	WINSLOW, LEE C	SWO MED
HEBM	JOB	Helibase Manager	BLAIR, JESSE	SWO GP
HEBM	JOB	Helibase Manager	FOSTER, KELLY S	SWO MED
HEBM	TRN	Helibase Manager	LIZIO, CORY R	SWO GP
HEBM	TRN	Helibase Manager	STEVENS, TATE E	SWO MED
HEBM	JOB	Helibase Manager	WINSLOW, LEE C	SWO MED
HECM	TRN	Helicopter Crew Member	BEALL, TARLTON	SWO GP
HECM	JOB	Helicopter Crew Member	BLAIR, JESSE	SWO GP
HECM	TRN	Helicopter Crew Member	BRIGGS, RAYMOND	SWO MED
HECM	JOB	Helicopter Crew Member	CARRIER, IVAN B	SWO GP
HECM	TRN	Helicopter Crew Member	CLAYTON, WILLIAM	SWO MED
HECM	TRN	Helicopter Crew Member	EASTIN, GREG S	SWO GP
HECM	JOB	Helicopter Crew Member	FOSTER, KELLY S	SWO MED
HECM	TRN	Helicopter Crew Member	GRIFFITH, ISAIAH DAVID	SWO MED
HECM	TRN	Helicopter Crew Member	GRIMES, KAYL A	SWO MED
HECM	TRN	Helicopter Crew Member	HERINCKX, ANDREW	SWO MED
HECM	TRN	Helicopter Crew Member	HOLMES, CHRIS M	SWO MED
HECM	TRN	Helicopter Crew Member	HUNTLEY, CLINT	SWO MED
HECM	JOB	Helicopter Crew Member	JOHNSON, HERB	SWO MED
HECM	JOB	Helicopter Crew Member	Kazakoff, Larry	SWO MED
HECM	JOB	Helicopter Crew Member	KELLEY, HARRY	SWO MED

HECM	JOB	Helicopter Crew Member	KNIGHT, JASON	SWO MED
HECM	JOB	Helicopter Crew Member	KURZYNIEC, JACOB	SWO MED
HECM	JOB	Helicopter Crew Member	LIZIO, CORY R	SWO GP
HECM	JOB	Helicopter Crew Member	MARASCO, TAYLOR	SWO MED
HECM	JOB	Helicopter Crew Member	MCCARTY, TYLER S	SWO GP
HECM	TRN	Helicopter Crew Member	MCLAUGHLIN, GAVIN	SWO MED
HECM	TRN	Helicopter Crew Member	Miller, Ethan	SWO MED
HECM	TRN	Helicopter Crew Member	Rathjen, Robert	SWO MED
HECM	TRN	Helicopter Crew Member	RICHARDS, CHARLES E	SWO GP
HECM	JOB	Helicopter Crew Member	SCOTT, JOSHUA	SWO MED
HECM	JOB	Helicopter Crew Member	STEVENS, TATE ELDER	SWO MED
HECM	TRN	Helicopter Crew Member	STRATTON, HUNTER C	SWO GP
HECM	JOB	Helicopter Crew Member	VAN AVERY, JORDAN	SWO MED
HECM	TRN	Helicopter Crew Member	WALEN, BEN M	SWO MED
HECM	JOB	Helicopter Crew Member	WILKERSON, TAYLOR	SWO MED
HECM	JOB	Helicopter Crew Member	WINSLOW, LEE C	SWO MED
HECM	TRN	Helicopter Crew Member	WYNDEARO, TRAVIS R	SWO GP
HECM	TRN	Helicopter Crew Member	ZEHE, BLAKE J	SWO GP
HELR	JOB	Helicopter Long Line	Kazakoff, Larry	SWO MED
HEQB	TRN	Heavy Equipment Boss, Single Resource	BALLOU, ROSS	SWO MED
HEQB	TRN	Heavy Equipment Boss, Single Resource	BEALL, TARLTON	SWO GP
HEQB	JOB	Heavy Equipment Boss, Single Resource	BRIGGS, RAYMOND	SWO MED
HEQB	JOB	Heavy Equipment Boss, Single Resource	CARRIER, IVAN B	SWO GP
HEQB	JOB	Heavy Equipment Boss, Single Resource	Caster, Levi	SWO MED
HEQB	JOB	Heavy Equipment Boss, Single Resource	CHALMERS, ROBERT	SWO MED
HEQB	TRN	Heavy Equipment Boss, Single Resource	CLAYTON, WILLIAM	SWO MED
HEQB	TRN	Heavy Equipment Boss, Single Resource	DERRICK, CODY JAMES	SWO MED
HEQB	TRN	Heavy Equipment Boss, Single Resource	Dill, Jeramie	SWO MED

HEQB	JOB	Heavy Equipment Boss, Single Resource	DRAKE, PARIS	SWO MED
HEQB	TRN	Heavy Equipment Boss, Single Resource	EASTIN, GREG S	SWO GP
HEQB	JOB	Heavy Equipment Boss, Single Resource	FOSTER, KELLY S	SWO MED
HEQB	TRN	Heavy Equipment Boss, Single Resource	GRIFFITH, ISAIAH	SWO MED
HEQB	JOB	Heavy Equipment Boss, Single Resource	GRIMES, KAYL A	SWO MED
HEQB	TRN	Heavy Equipment Boss, Single Resource	GROSSMAN, ANDREW SPENCER	SWO MED
HEQB	JOB	Heavy Equipment Boss, Single Resource	HAVNIEAR, MARCUS	SWO MED
HEQB	TRN	Heavy Equipment Boss, Single Resource	HERTLER, JESSE	SWO GP
HEQB	JOB	Heavy Equipment Boss, Single Resource	HOLMES, CHRIS M	SWO MED
HEQB	JOB	Heavy Equipment Boss, Single Resource	HUNTLEY, CLINT	SWO MED
HEQB	JOB	Heavy Equipment Boss, Single Resource	JOHNSON, DERRECK S	SWO GP
HEQB	JOB	Heavy Equipment Boss, Single Resource	JOHNSON, HERB	SWO MED
HEQB	JOB	Heavy Equipment Boss, Single Resource	KELLEY, HARRY	SWO MED
HEQB	JOB	Heavy Equipment Boss, Single Resource	KERNS, BRANDON J	SWO GP
HEQB	JOB	Heavy Equipment Boss, Single Resource	KINNEY, SEAN	SWO MED
HEQB	JOB	Heavy Equipment Boss, Single Resource	KLING, NELSON	SWO MED
HEQB	JOB	Heavy Equipment Boss, Single Resource	KNIGHT, JASON	SWO MED
HEQB	JOB	Heavy Equipment Boss, Single Resource	KURZYNIEC, JACOB	SWO MED
HEQB	TRN	Heavy Equipment Boss, Single Resource	LANE, CONNOR	SWO MED
HEQB	JOB	Heavy Equipment Boss, Single Resource	MARASCO, TAYLOR	SWO MED
HEQB	JOB	Heavy Equipment Boss, Single Resource	MCCARTY, TYLER S	SWO GP
HEQB	JOB	Heavy Equipment Boss, Single Resource	MCLAUGHLIN, DON E	SWO GP
HEQB	TRN	Heavy Equipment Boss, Single Resource	MCLAUGHLIN, GAVIN	SWO MED
HEQB	TRN	Heavy Equipment Boss, Single Resource	Miller, Ethan	SWO MED
HEQB	TRN	Heavy Equipment Boss, Single Resource	MOORE, DANIEL	SWO MED

HEQB	JOB	Heavy Equipment Boss, Single Resource	PRYTS, JOE R	SWO GP
HEQB	TRN	Heavy Equipment Boss, Single Resource	RICHARDS, CHARLES E	SWO GP
HEQB	TRN	Heavy Equipment Boss, Single Resource	ROBERTS, JEFFREY T	SWO GP
HEQB	JOB	Heavy Equipment Boss, Single Resource	RYAN, TIMOTHY P	SWO MED
HEQB	JOB	Heavy Equipment Boss, Single Resource	SCOTT, JOSHUA	SWO MED
HEQB	JOB	Heavy Equipment Boss, Single Resource	SMITH, BILLY P	SWO MED
HEQB	TRN	Heavy Equipment Boss, Single Resource	Sollinger, Griffin L	SWO MED
HEQB	TRN	Heavy Equipment Boss, Single Resource	STEVENS, TATE ELDER	SWO MED
HEQB	TRN	Heavy Equipment Boss, Single Resource	STRATTON, HUNTER C	SWO GP
HEQB	JOB	Heavy Equipment Boss, Single Resource	SWINK, TIMOTHY C	SWO GP
HEQB	JOB	Heavy Equipment Boss, Single Resource	SYFERT, KYLE	SWO GP
HEQB	JOB	Heavy Equipment Boss, Single Resource	THACKERY, DOUG V	SWO GP
HEQB	JOB	Heavy Equipment Boss, Single Resource	VAN AVERY, JORDAN	SWO MED
HEQB	JOB	Heavy Equipment Boss, Single Resource	WALEN, BEN M	SWO MED
HEQB	JOB	Heavy Equipment Boss, Single Resource	WILKERSON, TAYLOR	SWO MED
HEQB	JOB	Heavy Equipment Boss, Single Resource	WINSLOW, LEE C	SWO MED
HEQB	JOB	Heavy Equipment Boss, Single Resource	WOMACK, TYLER B	SWO MED
HEQB	JOB	Heavy Equipment Boss, Single Resource	WYNDEARO, TRAVIS	SWO GP
HIOP	JOB	Handheld Infrared Operator	KERNS, BRANDON J	SWO GP
HLCO	JOB	Helicopter Coordinator	BLAIR, JESSE	SWO GP
HLCO	JOB	Helicopter Coordinator	JOHNSON, HERB	SWO MED
HLCO	JOB	Helicopter Coordinator	KURZYNIEC, JACOB	SWO MED
HLCO	TRN	Helicopter Coordinator	LIZIO, CORY	SWO GP
HLCO	TRN	Helicopter Coordinator	VAN AVERY, JORDAN	SWO MED
HLCO	JOB	Helicopter Coordinator	WINSLOW, LEE C	SWO MED
HMGB	JOB	Helicopter Manager, Single Resource	BLAIR, JESSE	SWO GP
HMGB	JOB	Helicopter Manager, Single Resource	FOSTER, KELLY S	SWO MED

HMGB	TRN	Helicopter Manager, Single Resource	GRIFFITH, ISAIAH	SWO MED
HMGB	JOB	Helicopter Manager, Single Resource	JOHNSON, HERB	SWO MED
HMGB	JOB	Helicopter Manager, Single Resource	KELLEY, HARRY	SWO MED
HMGB	JOB	Helicopter Manager, Single Resource	KNIGHT, JASON	
HMGB	JOB	Helicopter Manager, Single Resource	KURZYNIEC, JACOB	SWO MED
HMGB	JOB	Helicopter Manager, Single Resource	LIZIO, CORY	SWO GP
HMGB	JOB	Helicopter Manager, Single Resource	RIPBERGER, KYLE	SWO MED
HMGB	TRN	Helicopter Manager, Single Resource	ROBERTS, JEFFREY T	SWO GP
HMGB	JOB	Helicopter Manager, Single Resource	STEVENS, TATE E	SWO MED
HMGB	JOB	Helicopter Manager, Single Resource	VAN AVERY, JORDAN	SWO MED
HMGB	JOB	Helicopter Manager, Single Resource	WILKERSON, TAYLOR	SWO MED
HMGB	JOB	Helicopter Manager, Single Resource	WINSLOW, LEE C	SWO MED
IACR	JOB	Interagency Contract Representative	KELLEY, HARRY	SWO MED
IADP	TRN	Initial Attack Dispatcher	BRYAN, LORI	SWO GP
IADP	JOB	Initial Attack Dispatcher	BURKHART, TERESA ANN	SWO MED
IADP	TRN	Initial Attack Dispatcher	COLLINS, STACY N	SWO GP
IADP	JOB	Initial Attack Dispatcher	FUMASI, MATTHEW	SWO MED
IADP	TRN	Initial Attack Dispatcher	LEVITT, BRENDA	SWO GP
IADP	TRN	Initial Attack Dispatcher	OWEN, MARISSA L	SWO GP
IADP	TRN	Initial Attack Dispatcher	SCHULTZ, MISTY	SWO GP
IADP	TRN	Initial Attack Dispatcher	SNOW, CURTIS J	SWO MED
IADP	TRN	Initial Attack Dispatcher	SORWEIDE, JESSENIA A	SWO GP
IADP	JOB	Initial Attack Dispatcher	STEPHENS, CHELSIE	SWO MED
ICT1	TRN	Incident Commander Type 1	MCCARTY, TYLER	SWO MED
ICT2	JOB	Incident Commander Type 2	MCCARTY, TYLER	SWO MED
ICT2	TRN	Incident Commander Type 2	LARSON, DAVID M	SWO MED
ICT3	JOB	Incident Commander Type 3	BLAIR, JESSE	SWO GP
ICT3	TRN	Incident Commander Type 3	BRIGGS, RAYMOND	SWO MED
ICT3	TRN	Incident Commander Type 3	CARRIER, IVAN B	SWO GP
ICT3	JOB	Incident Commander Type 3	JOHNSON, DERRECK S	SWO GP

ICT3	JOB	Incident Commander Type 3	JOHNSON, HERB	SWO MED
ICT3	JOB	Incident Commander Type 3	Kazakoff, Larry	SWO MED
ICT3	JOB	Incident Commander Type 3	KELLEY, HARRY	SWO MED
ICT3	JOB	Incident Commander Type 3	KERNS, BRANDON J	SWO GP
ICT3	JOB	Incident Commander Type 3	KURZYNIEC, JACOB	SWO MED
ICT3	JOB	Incident Commander Type 3	MCCARTY, TYLER S	SWO GP
ICT3	JOB	Incident Commander Type 3	SMITH, BILLY P	SWO MED
ICT3	JOB	Incident Commander Type 3	SWINK, TIMOTHY C	SWO GP
ICT3	JOB	Incident Commander Type 3	THACKERY, DOUG	SWO GP
ICT3	TRN	Incident Commander Type 3	WALEN, BEN M	SWO GP
ICT3	JOB	Incident Commander Type 3	WILKERSON, TAYLOR	SWO MED
ICT3	JOB	Incident Commander Type 3	WINSLOW, LEE C	SWO MED
ICT3	TRN	Incident Commander Type 3	WOMACK, TYLER B	SWO MED
ICT4	TRN	Incident Commander Type 4	ANTHONY, PETER JOSEPH	SWO GP
ICT4	JOB	Incident Commander Type 4	BALLOU, ROSS	SWO MED
ICT4	TRN	Incident Commander Type 4	BEALL, TARLTON L	SWO GP
ICT4	JOB	Incident Commander Type 4	BLAIR, JESSE	SWO GP
ICT4	JOB	Incident Commander Type 4	BRIGGS, RAYMOND	SWO MED
ICT4	JOB	Incident Commander Type 4	CARRIER, IVAN B	SWO GP
ICT4	JOB	Incident Commander Type 4	Caster, Levi	SWO MED
ICT4	JOB	Incident Commander Type 4	CHALMERS, ROBERT	SWO MED
ICT4	TRN	Incident Commander Type 4	CLAYTON, WILLIAM LEE	SWO MED
ICT4	JOB	Incident Commander Type 4	DRAKE, PARIS	SWO MED
ICT4	TRN	Incident Commander Type 4	EASTIN, GREG S	SWO GP
ICT4	TRN	Incident Commander Type 4	FOSTER, KELLY S	SWO MED
ICT4	JOB	Incident Commander Type 4	GRIMES, KAYL A	SWO MED
ICT4	TRN	Incident Commander Type 4	GROSSMAN, ANDREW SPENCER	SWO MED
ICT4	JOB	Incident Commander Type 4	HAVNIEAR, MARCUS	SWO MED
ICT4	JOB	Incident Commander Type 4	HOLMES, CHRIS M	SWO MED

ICT4	JOB	Incident Commander Type 4	HUNTLEY, CLINT	SWO MED
ICT4	JOB	Incident Commander Type 4	JOHNSON, DERRECK S	SWO GP
ICT4	JOB	Incident Commander Type 4	JOHNSON, HERB	SWO MED
ICT4	JOB	Incident Commander Type 4	Kazakoff, Larry	SWO MED
ICT4	JOB	Incident Commander Type 4	KERNS, BRANDON J	SWO GP
ICT4	JOB	Incident Commander Type 4	KELLEY, HARRY	SWO MED
ICT4	TRN	Incident Commander Type 4	KINNEY, SEAN M	SWO MED
ICT4	JOB	Incident Commander Type 4	KLING, NELSON	SWO MED
ICT4	JOB	Incident Commander Type 4	KURZYNIEC, JACOB	SWO MED
ICT4	TRN	Incident Commander Type 4	LIZIO, CORY R	SWO GP
ICT4	JOB	Incident Commander Type 4	MARASCO, TAYLOR	SWO MED
ICT4	JOB	Incident Commander Type 4	MCCARTY, TYLER S	SWO GP
ICT4	JOB	Incident Commander Type 4	MOORE, DANIEL	SWO MED
ICT4	JOB	Incident Commander Type 4	Rathjen, Robert	SWO MED
ICT4	JOB	Incident Commander Type 4	RICHARDS, CHARLES E	SWO GP
ICT4	JOB	Incident Commander Type 4	RIPBERGER, KYLE	SWO MED
ICT4	TRN	Incident Commander Type 4	ROBERTS, JEFFREY T	SWO GP
ICT4	JOB	Incident Commander Type 4	RYAN, TIMOTHY P	SWO MED
ICT4	JOB	Incident Commander Type 4	SCOTT, JOSHUA	SWO MED
ICT4	JOB	Incident Commander Type 4	SMITH, BILLY P	SWO MED
ICT4	JOB	Incident Commander Type 4	STEVENS, TATE ELDER	SWO MED
ICT4	JOB	Incident Commander Type 4	STRATTON, HUNTER C	SWO GP
ICT4	JOB	Incident Commander Type 4	STUDLEY, KEVIN L	SWO GP
ICT4	JOB	Incident Commander Type 4	SWINK, TIMOTHY C	SWO GP
ICT4	JOB	Incident Commander Type 4	THACKERY, DOUG V	SWO GP
ICT4	JOB	Incident Commander Type 4	VAN AVERY, JORDAN	SWO MED
ICT4	JOB	Incident Commander Type 4	WALEN, BEN M	SWO MED
ICT4	JOB	Incident Commander Type 4	WILKERSON, TAYLOR	SWO MED
ICT4	JOB	Incident Commander Type 4	WINSLOW, LEE C	SWO MED
ICT4	JOB	Incident Commander Type 4	WOMACK, TYLER B	SWO MED



ICT4	TRN	Incident Commander Type 4	WYNDEARO, TRAVIS R	SWO GP
ICT5	TRN	Incident Commander Type 5	ALBRIGHT, KYLE D	SWO GP
ICT5	JOB	Incident Commander Type 5	ANTHONY, PETER JOSEPH	SWO MED
ICT5	JOB	Incident Commander Type 5	BALLOU, ROSS	SWO MED
ICT5	TRN	Incident Commander Type 5	BEALL, TARLTON	SWO GP
ICT5	JOB	Incident Commander Type 5	Beavers, Tobias	SWO MED
ICT5	TRN	Incident Commander Type 5	BOND, ELIAS	SWO GP
ICT5	JOB	Incident Commander Type 5	BRIGGS, RAYMOND	SWO MED
ICT5	JOB	Incident Commander Type 5	CARRIER, IVAN B	SWO GP
ICT5	JOB	Incident Commander Type 5	Caster, Levi	SWO MED
ICT5	TRN	Incident Commander Type 5	Castillo, Alfonso	SWO MED
ICT5	JOB	Incident Commander Type 5	CHALMERS, ROBERT	SWO MED
ICT5	TRN	Incident Commander Type 5	CLAASSEN, CALVIN M	SWO GP
ICT5	TRN	Incident Commander Type 5	CLARK, CURTIS D	SWO GP
ICT5	JOB	Incident Commander Type 5	CLAYTON, WILLIAM	SWO MED
ICT5	TRN	Incident Commander Type 5	Cunha, Alex	SWO MED
ICT5	TRN	Incident Commander Type 5	CUTILLO, JACOB M	SWO GP
ICT5	TRN	Incident Commander Type 5	DERRICK, CODY JAMES	SWO MED
ICT5	JOB	Incident Commander Type 5	Dill, Jeramie	SWO MED
ICT5	JOB	Incident Commander Type 5	DRAKE, PARIS	SWO MED
ICT5	JOB	Incident Commander Type 5	EASTIN, GREG S	SWO GP
ICT5	TRN	Incident Commander Type 5	ENGLISH, CALEB JAMES	SWO MED
ICT5	TRN	Incident Commander Type 5	EVANS, ANDREW S	SWO GP
ICT5	TRN	Incident Commander Type 5	EVANS, GABRIEL A	SWO GP
ICT5	TRN	Incident Commander Type 5	FLORES, GABRIEL A	SWO GP
ICT5	JOB	Incident Commander Type 5	FOSTER, KELLY S	SWO MED
ICT5	TRN	Incident Commander Type 5	FUMASI, MATTHEW	SWO MED
ICT5	TRN	Incident Commander Type 5	GONZALEZ, MICHAEL A	SWO GP
ICT5	TRN	Incident Commander Type 5	GRIFFITH, ISAIAH DAVID	SWO MED
ICT5	JOB	Incident Commander Type 5	GRIMES, KAYL A	SWO MED
ICT5	TRN	Incident Commander Type 5	GROSSMAN, ANDREW	SWO MED

ICT5	JOB	Incident Commander Type 5	HAVNIEAR, MARCUS	SWO MED
ICT5	TRN	Incident Commander Type 5	HERINCKX, ANDREW	SWO MED
ICT5	TRN	Incident Commander Type 5	HERTLER, JESSE L	SWO GP
ICT5	TRN	Incident Commander Type 5	HINTHORNE, DEVIN T	SWO GP
ICT5	TRN	Incident Commander Type 5	HITCHCOCK, JACOB MATTHEW	SWO MED
ICT5	JOB	Incident Commander Type 5	HOLMES, CHRIS M	SWO MED
ICT5	TRN	Incident Commander Type 5	HOWELL, CHRISTIAN C	SWO GP
ICT5	JOB	Incident Commander Type 5	HUNTLEY, CLINT	SWO MED
ICT5	JOB	Incident Commander Type 5	Hussey, Dawson	SWO MED
ICT5	TRN	Incident Commander type 5	Huth, Thomas J	SWO GP
ICT5	JOB	Incident Commander Type 5	JENSEN, COLTON K	SWO GP
ICT5	JOB	Incident Commander Type 5	JOHNSON, DERRECK S	SWO GP
ICT5	JOB	Incident Commander Type 5	JOHNSON, HERB	SWO MED
ICT5	TRN	Incident Commander Type 5	JOHNSON, NATHANIEL L	SWO MED
ICT5	JOB	Incident Commander Type 5	Kazakoff, Larry	SWO MED
ICT5	JOB	Incident Commander Type 5	KERNS, BRANDON J	SWO GP
ICT5	TRN	Incident Commander Type 5	KINNEY, SEAN M	SWO MED
ICT5	JOB	Incident Commander Type 5	KLING, NELSON	SWO MED
ICT5	JOB	Incident Commander Type 5	KNIGHT, JASON	SWO MED
ICT5	JOB	Incident Commander Type 5	KURZYNIEC, JACOB	SWO MED
ICT5	JOB	Incident Commander Type 5	LANE, CONNOR	SWO MED
ICT5	JOB	Incident Commander Type 5	LIZIO, CORY R	SWO GP
ICT5	TRN	Incident Commander Type 5	LOYD, BRANDON D	SWO GP
ICT5	JOB	Incident Commander Type 5	MARASCO, TAYLOR	SWO MED
ICT5	TRN	Incident Commander Type 5	MCALPINE, CODY	SWO GP
ICT5	TRN	Incident Commander Type 5	MCLAUGHLIN, GAVIN	SWO MED
ICT5	JOB	Incident Commander Type 5	Miller, Ethan	SWO MED
ICT5	TRN	Incident Commander Type 5	Miles, Jeremy Russel	SWO MED
ICT5	JOB	Incident Commander Type 5	MOORE, DANIEL	SWO MED
ICT5	TRN	Incident Commander Type 5	OSORIO, HUMBERTO JR	SWO MED

ICT5	TRN	Incident Commander Type 5	PINTO, ANGEL NMN	SWO GP
ICT5	JOB	Incident Commander Type 5	PRYTS, JOE R	SWO GP
ICT5	TRN	Incident Commander Type 5	RAFFAELLY, PHILLIP V	SWO GP
ICT5	JOB	Incident Commander Type 5	RICHARDS, CHARLES E	SWO GP
ICT5	JOB	Incident Commander Type 5	ROBERTS, JEFFREY T	SWO GP
ICT5	TRN	Incident Commander Type 5	RUDD, RYAN G	SWO GP
ICT5	TRN	Incident Commander Type 5	RUGEL, PATRICK C	SWO GP
ICT5	JOB	Incident Commander Type 5	RYAN, TIMOTHY P	SWO MED
ICT5	JOB	Incident Commander Type 5	SCOTT, JOSHUA	SWO MED
ICT5	JOB	Incident Commander Type 5	SMITH, BILLY P	SWO MED
ICT5	JOB	Incident Commander Type 5	SORWEIDE, COLTON	SWO GP
ICT5	JOB	Incident Commander Type 5	STEPHENS, CHELSIE	SWO MED
ICT5	JOB	Incident Commander Type 5	STEVENS, TATE ELDER	SWO MED
ICT5	JOB	Incident Commander Type 5	STRANDQUIST, BRANDON	SWO GP
ICT5	JOB	Incident Commander Type 5	STRATTON, HUNTER C	SWO GP
ICT5	JOB	Incident Commander Type 5	STUDLEY, KEVIN	SWO GP
ICT5	JOB	Incident Commander Type 5	SWINK, TIMOTHY C	SWO GP
ICT5	JOB	Incident Commander Type 5	THACKERY, DOUG V	SWO GP
ICT5	JOB	Incident Commander Type 5	VAN AVERY, JORDAN	SWO MED
ICT5	TRN	Incident Commander Type 5	VANLEEUVEN, KENNETH	SWO GP
ICT5	JOB	Incident Commander Type 5	WALEN, BEN M	SWO MED
ICT5	TRN	Incident Commander Type 5	WEHAGE, KYLE A	SWO GP
ICT5	JOB	Incident Commander Type 5	WHALAN, SEAN M	SWO GP
ICT5	JOB	Incident Commander Type 5	WILKERSON, TAYLOR	SWO MED
ICT5	JOB	Incident Commander Type 5	WINSLOW, LEE C	SWO MED
ICT5	JOB	Incident Commander Type 5	WOMACK, TYLER B	SWO MED
ICT5	JOB	Incident Commander Type 5	WYNDEARO, TRAVIS	SWO GP
INVF	JOB	Wildland Fire Investigator	BLAIR, JESSE	SWO GP
INVF	TRN	Wildland Fire Investigator	CARRIER, IVEN B	SWO GP
INVF	TRN	Wildland Fire Investigator	DRAKE, PARIS	SWO MED
INVF	JOB	Wildland Fire Investigator	JOHNSON, DERRECK S	SWO GP
INVF	TRN	Wildland Fire Investigator	KLING, NELSON	SWO MED
INVF	TRN	Wildland Fire Investigator	MOORE, DANIEL	SWO MED

INVF	TRN	Wildland Fire Investigator	ROBERTS, JEFFREY T	SWO GP
INVF	TRN	Wildland Fire Investigator	STRATTON, HUNTER C	SWO GP
INVF	TRN	Wildland Fire Investigator	THACKERY, DOUG V	SWO GP
INVF	TRN	Wildland Fire Investigator	WALEN, BEN M	SWO MED
INVF	JOB	Wildland Fire Investigator	WINSLOW, LEE C	SWO MED
IRFS	JOB	Infrared Field Specialist	KELLY, ROBERT F	SWO GP
LRBD	JOB	Local Resource Boss Dozer	THACKERY, DOUG V	SWO GP
LRBE	JOB	Local Resource Boss Engine	THACKERY, DOUG V	SWO GP
LROF	JOB	Local Resource Boss Felling	THACKERY, DOUG V	SWO GP
LSC2	JOB	Logistics Section Chief Type 2	RUDD, CHRISTOPHER C	SWO GP
ORDM	JOB	Ordering Manager	RUDD, CHRISTOPHER C	SWO GP
OSC1	TRN	Operations Section Chief Type 1	BLAIR, JESSE	SWO GP
OSC1	TRN	Operations Section Chief Type 1	MCCARTY, TYLER	SWO MED
OSC2	TRN	Operations Section Chief Type 2	BLAIR, JESSE	SWO GP
OSC2	TRN	Operations Section Chief Type 2	KERNS, BRANDON J	SWO GP
OSC2	TRN	Operations Section Chief Type 2	KURZYNIEC, JACOB	SWO MED
OSC2	JOB	Operations Section Chief Type 2	LARSON, DAVID M	SWO MED
OSC2	JOB	Operations Section Chief Type 2	MCCARTY, TYLER S	SWO GP
OSC2	JOB	Operations Section Chief Type 2	SMITH, BILLY P	SWO MED
OSC2	TRN	Operations Section Chief Type 2	SWINK, TIMOTHY C	SWO GP
OSC2	TRN	Operations Section Chief Type 2	WILKERSON, TAYLOR	SWO MED
OSC2	JOB	Operations Section Chief Type 2	WITZ, KARL W	SWO GP
PAY2	JOB	Payment Team Member TIME	ODOM, COURTNEY MARIN	SWO GP
PAY3	JOB	Payment Team Member PROC	ODOM, COURTNEY MARIN	SWO GP
PETM	TRN	Fire Prevention Education Team Member	BALLOU, BRIAN R	SWO MED
PIO1	JOB	Public Information Officer Type 1	BALLOU, BRIAN R	SWO MED
PIO2	JOB	Public Information Officer Type 2	BALLOU, BRIAN R	SWO MED
PIO2	JOB	Public Information Officer Type 2	HICKMAN, DON	SWO MED
PIO2	TRN	Public Information Officer Type 2	WEBER, NATALIE ROSE	SWO MED
PIOF	JOB	Public Information Officer	BALLOU, BRIAN R	SWO MED
PIOF	JOB	Public Information Officer	WEBER, NATALIE R	SWO MED
PROC	TRN	Procurement Unit Leader	JARRATT, KAREN H	SWO MED

PROC	TRN	Procurement Unit Leader	SNOW, CURTIS J	SWO MED
PROC	JOB	Procurement Unit Leader	ODOM, COURTNEY MARIN	SWO GP
PCS2	TRN	Procurement Unit Leader	FUMASI, MATTHEW	SWO MED
PSC3	JOB	Planning Section Chief Type 3	FUMASI, MATTHEW	SWO MED
PTRC	TRN	Personnel Time Recorder	COLLINS, STACY NANNETTE	SWO GP
PTRC	TRN	Personnel Time Recorder	JARRATT, KAREN H	SWO MED
PTRC	JOB	Personnel Time Recorder	POLACEK, SHELLEY K	SWO MED
PTRC	TRN	Personnel Time Recorder	SNOW, CURTIS J	SWO MED
PTRC	JOB	Personnel Time Recorder	ODOM, COURTNEY MARIN	SWO GP
PTRC	JOB	Personnel Time Recorder	WALLACE, NATALIE	SWO GP
RADO	TRN	Radio Operator	ANTHONY, JOSH L	SWO GP
RADO	TRN	Radio Operator	BRYAN, LORI M	SWO GP
RADO	JOB	Radio Operator	BURKHART, TERESA	SWO MED
RADO	TRN	Radio Operator	COLLINS, STACY NANETTE	SWO MED
RADO	JOB	Radio Operator	FUMASI, MATTHEW	SWO MED
RADO	TRN	Radio Operator	LEVITT, BRENDA J	SWO GP
RADO	TRN	Radio Operator	OWEN, MARISSA L	SWO GP
RADO	JOB	Radio Operator	SCHULTZ, MISTY	SWO GP
RADO	TRN	Radio Operator	Seager, Anthony M	SWO MED
RADO	JOB	Radio Operator	SNOW, CURTIS JOHN	SWO MED
RADO	TRN	Radio Operator	SORWEIDE, JESSENIA A	SWO GP
RADO	JOB	Radio Operator	STEPHENS, CHELSIE	SWO MED
RAMP	JOB	Ramp Manager	KELLEY, HARRY	SWO MED
RCDM	JOB	Receiving /Distribution Manager	RUDD, CHRISTOPHER C	SWO GP
RESL	TRN	Resources Unit Leader	FUMASI, MATTHEW	SWO MED
RXB2	JOB	Prescribed Fire Burn Boss 2	Kazakoff, Larry	SWO MED
RXB3	JOB	Prescribed Fire Burn Boss Type 3	Kazakoff, Larry	SWO MED
RXCM	JOB	Prescribed Fire Crew Member	Kazakoff, Larry	SWO MED
RXCM	JOB	Prescribed Fire Crew Member	Rathjen, Robert	SWO MED

SCKN	JOB	Status/Check-in Recorder	FUMASI, MATTHEW	SWO MED
SCKN	TRN	Status/Check-in Recorder	Rathjen, Robert	SWO MED
SOFR	TRN	Safety Officer, Line	SWINK, TIMOTHY C	SWO GP
STAM	TRN	Staging Area Manager	HAVNIEAR, MARCUS	SWO MED
STAM	JOB	Staging Area Manager	JOHNSON, DERRECK S	SWO GP
STAM	TRN	Staging Area Manager	ROCHA, NIJIEL E	SWO GP
STAM	JOB	Staging Area Manager	RUDD, CHRISTOPHER C	SWO GP
STCR	JOB	Strike Team Leader Crew	BLAIR, JESSE	SWO GP
STCR	JOB	Strike Team Leader Crew	BRIGGS, RAYMOND	SWO MED
STCR	JOB	Strike Team Leader Crew	CHALMERS, ROBERT	SWO MED
STCR	JOB	Strike Team Leader Crew	DRAKE, PARIS	SWO MED
STCR	JOB	Strike Team Leader Crew	GRIMES, KAYL A	SWO MED
STCR	JOB	Strike Team Leader Crew	HAVNIEAR, MARCUS	SWO MED
STCR	TRN	Strike Team Leader Crew	HUNTLEY, CLINT	SWO MED
STCR	JOB	Strike Team Leader Crew	JOHNSON, DERRECK S	SWO GP
STCR	JOB	Strike Team Leader Crew	JOHNSON, HERB	SWO MED
STCR	JOB	Strike Team Leader Crew	Kazakoff, Larry	SWO MED
STCR	TRN	Strike Team Leader Crew	KINNEY, SEAN M	SWO MED
STCR	JOB	Strike Team Leader Crew	KLING, NELSON	SWO MED
STCR	JOB	Strike Team Leader Crew	KURZYNIEC, JACOB	SWO MED
STCR	TRN	Strike Team Leader Crew	LANE, CONNOR	SWO MED
STCR	TRN	Strike Team Leader Crew	MARASCO, TAYLOR	SWO MED
STCR	JOB	Strike Team Leader Crew	MCCARTY, TYLER S	SWO GP
STCR	JOB	Strike Team Leader Crew	MOORE, DANIEL	SWO MED
STCR	JOB	Strike Team Leader Crew	Rathjen, Robert	SWO MED
STCR	JOB	Strike Team Leader Crew	SCOTT, JOSHUA	SWO MED
STCR	JOB	Strike Team Leader Crew	SMITH, BILLY P	SWO MED
STCR	TRN	Strike Team Leader Crew	STEVENS, TATE W	SWO MED

STCR	JOB	Strike Team Leader Crew	VAN AVERY, JORDAN	SWO MED
STCR	JOB	Strike Team Leader Crew	WILKERSON, TAYLOR	SWO MED
STCR	JOB	Strike Team Leader Crew	WINSLOW, LEE C	SWO MED
STCR	JOB	Strike Team Leader Crew	WOMACK, TYLER B	SWO MED
STEN	JOB	Strike Team Leader Engine	BEALL, TARLTON L	SWO GP
STEN	JOB	Strike Team Leader Engine	BLAIR, JESSE	SWO GP
STEN	JOB	Strike Team Leader Engine	BRIGGS, RAYMOND	SWO MED
STEN	JOB	Strike Team Leader Engine	CHALMERS, ROBERT	SWO MED
STEN	JOB	Strike Team Leader Engine	DRAKE, PARIS	SWO MED
STEN	TRN	Strike Team Leader Engine	GRIMES, KAYL A	SWO MED
STEN	JOB	Strike Team Leader Engine	HAVNIEAR, MARCUS	SWO MED
STEN	TRN	Strike Team Leader Engine	HUNTLEY, CLINT	SWO MED
STEN	JOB	Strike Team Leader Engine	JOHNSON, DERRECK S	SWO GP
STEN	JOB	Strike Team Leader Engine	JOHNSON, HERB	SWO MED
STEN	TRN	Strike Team Leader Engine	KINNEY, SEAN M	SWO MED
STEN	JOB	Strike Team Leader Engine	KLING, NELSON	SWO MED
STEN	JOB	Strike Team Leader Engine	KURZYNIEC, JACOB	SWO MED
STEN	TRN	Strike Team Leader Engine	LANE, CONNOR	SWO MED
STEN	TRN	Strike Team Leader Engine	MARASCO, TAYLOR	SWO MED
STEN	JOB	Strike Team Leader Engine	MCCARTY, TYLER S	SWO GP
STEN	JOB	Strike Team Leader Engine	MCLAUGHLIN, DON E	SWO GP
STEN	JOB	Strike Team Leader Engine	MOORE, DANIAL	SWO MED
STEN	JOB	Strike Team Leader Engine	SCOTT, JOSHUA	SWO MED
STEN	JOB	Strike Team Leader Engine	SMITH, BILLY P	SWO MED
STEN	TRN	Strike Team Leader Engine	STEVENS, TATE E	SWO MED
STEN	TRN	Strike Team Leader Engine	STUDLEY, KEVIN L	SWO GP
STEN	JOB	Strike Team Leader Engine	VAN AVERY, JORDAN	SWO MED
STEN	JOB	Strike Team Leader Engine	WILKERSON, TAYLOR	SWO MED

STEN	JOB	Strike Team Leader Engine	WINSLOW, LEE C	SWO MED
STEN	JOB	Strike Team Leader Engine	WOMACK, TYLER B	SWO MED
STEQ	JOB	Strike Team Leader Heavy Equipment	BRIGGS, RAYMOND	SWO MED
STEQ	JOB	Strike Team Leader Heavy Equipment	CHALMERS, ROBERT	SWO MED
STEQ	JOB	Strike Team Leader Heavy Equipment	DRAKE, PARIS	SWO MED
STEQ	TRN	Strike Team Leader Heavy Equipment	GRIMES, KAYL A	SWO MED
STEQ	JOB	Strike Team Leader Heavy Equipment	HAVNIEAR, MARCUS	SWO MED
STEQ	TRN	Strike Team Leader Heavy Equipment	HUNTLEY, CLINT	SWO MED
STEQ	JOB	Strike Team Leader Heavy Equipment	JOHNSON, DERRECK S	SWO GP
STEQ	JOB	Strike Team Leader Heavy Equipment	JOHNSON, HERB	SWO MED
STEQ	TRN	Strike Team Leader Heavy Equipment	KINNEY, SEAN M	SWO MED
STEQ	JOB	Strike Team Leader Heavy Equipment	KLING, NELSON	SWO MED
STEQ	JOB	Strike Team Leader Heavy Equipment	KURZYNIEC, JACOB	SWO MED
STEQ	TRN	Strike Team Leader Heavy Equipment	LANE, CONNOR	SWO MED
STEQ	TRN	Strike Team Leader Heavy Equipment	MARASCO, TAYLOR	SWO MED
STEQ	JOB	Strike Team Leader Heavy Equipment	MCCARTY, TYLER S	SWO MED
STEQ	JOB	Strike Team Leader Heavy Equipment	MCLAUGHLIN, DON E	SWO GP
STEQ	JOB	Strike Team Leader Heavy Equipment	MOORE, DANIEL	SWO MED
STEQ	JOB	Strike Team Leader Heavy Equipment	SCOTT, JOSHUA	SWO MED
STEQ	JOB	Strike Team Leader Heavy Equipment	SMITH, BILLY P	SWO MED
STEQ	TRN	Strike Team Leader Heavy Equipment	STEVENS, TATE E	SWO MED
STEQ	JOB	Strike Team Leader Heavy Equipment	VAN AVERY, JORDAN	SWO MED
STEQ	JOB	Strike Team Leader Heavy Equipment	WILKERSON, TAYLOR	SWO MED
STEQ	JOB	Strike Team Leader Heavy Equipment	WINSLOW, LEE C	SWO MED
STEQ	JOB	Strike Team Leader Heavy Equipment	WOMACK, TYLER B	SWO MED
SUBD	JOB	Support Branch Director	RUDD, CHRISTOPHER C	SWO GP



SVBD	JOB	Service Branch Director	RUDD, CHRISTOPHER C	SWO GP
TFLD	TRN	Task Force Leader	ANTHONY, PETER JOSEPH	SWO GP
TFLD	TRN	Task Force Leader	BALLOU, ROSS	SWO MED
TFLD	TRN	Task Force Leader	BEALL, TARLTON	SWO GP
TFLD	JOB	Task Force Leader	BLAIR, JESSE	SWO GP
TFLD	JOB	Task Force Leader	BRIGGS, RAYMOND	SWO MED
TFLD	JOB	Task Force Leader	CARRIER, IVAN B	SWO GP
TFLD	TRN	Task Force Leaders	CASTER, LEVI	SWO MED
TFLD	JOB	Task Force Leader	CHALMERS, ROBERT	SWO MED
TFLD	JOB	Task Force Leader	DRAKE, PARIS	SWO MED
TFLD	TRN	Task Force Leader	EASTIN, GREG S	SWO GP
TFLD	JOB	Task Force Leader	FOSTER, KELLY S	SWO MED
TFLD	TRN	Task Force Leader	GRIMES, KAYL A	SWO MED
TFLD	JOB	Task Force Leader	HAVNIEAR, MARCUS	SWO MED
TFLD	TRN	Task Force Leader	HOLMES, CHRIS M	SWO MED
TFLD	TRN	Task Force Leader	HUNTLEY, CLINT	SWO MED
TFLD	JOB	Task Force Leader	JOHNSON, DERRECK S	SWO GP
TFLD	JOB	Task Force Leader	JOHNSON, HERB	SWO MED
TFLD	JOB	Task Force Leader	Kazakoff, Larry	SWO MED
TFLD	JOB	Task Force Leader	KELLEY, HARRY	SWO MED
TFLD	JOB	Task Force Leader	KERNS, BRANDON J	SWO GP
TFLD	TRN	Task Force Leader	KINNEY, SEAN M	SWO MED
TFLD	JOB	Task Force Leader	KLING, NELSON	SWO MED
TFLD	JOB	Task Force Leader	KURZYNIEC, JACOB	SWO MED
TFLD	TRN	Task Force Leader	LANE, CONNOR	SWO MED
TFLD	TRN	Task Force Leader	LIZIO, CORY R	SWO GP
TFLD	TRN	Task Force Leader	MARASCO, TAYLOR	SWO MED
TFLD	JOB	Task Force Leader	MCCARTY, TYLER S	SWO GP
TFLD	JOB	Task Force Leader	MCLAUGHLIN, DON E	SWO GP
TFLD	JOB	Task Force Leader	MOORE, DANIEL	SWO MED

TFLD	JOB	Task Force Leader	PRYTS, JOE R	SWO GP
TFLD	JOB	Task Force Leader	Rathjen, Robert	SWO MED
TFLD	TRN	Task Force Leader	RICHARDS, CHARLES E	SWO GP
TFLD	JOB	Task Force Leader	RIPBERGER, KYLE	SWO MED
TFLD	TRN	Task Force Leader	ROBERTS, JEFFREY T	SWO GP
TFLD	JOB	Task Force Leader	SCOTT, JOSHUA	SWO MED
TFLD	JOB	Task Force Leader	SMITH, BILLY P	SWO MED
TFLD	TRN	Task Force Leader	STEVENS, TATE E	SWO MED
TFLD	TRN	Task Force Leader	STRATTON, HUNTER C	SWO GP
TFLD	TRN	Task Force Leader	STUDLEY, KEVIN L	SWO GP
TFLD	JOB	Task Force Leader	SWINK, TIMOTHY C	SWO GP
TFLD	JOB	Task Force Leader	THACKERY, DOUG V	SWO GP
TFLD	JOB	Task Force Leader	VAN AVERY, JORDAN	SWO MED
TFLD	JOB	Task Force Leader	WALEN, BEN M	SWO MED
TFLD	JOB	Task Force Leader	WILKERSON, TAYLOR	SWO MED
TFLD	JOB	Task Force Leader	WINSLOW, LEE C	SWO MED
TFLD	JOB	Task Force Leader	WOMACK, TYLER B	SWO MED
TFLD	TRN	Task Force Leader	WYNDEARO, TRAVIS R	SWO GP
THSP	JOB	Technical Specialist	BALLOU, BRIAN	SWO MED
THSP	JOB	Technical Specialist	BEAVERS, TOBIAS	SWO MED
THSP	JOB	Technical Specialist	ODOM, COURTNEY MARIN	SWO GP
THSP	JOB	Technical Specialist	POLACEK, SHELLEY	SWO MED
THSP	JOB	Technical Specialist	RUDD, CHRISTOPHER C	SWO GP
TIME	TRN	Time Unit Leader	JARRATT, KAREN	SWO MED
TIME	JOB	Time Unit Leader	ODOM, COURTNEY MARIN	SWO GP
TIME	TRN	Time Unit Leader	POLACEK, SHELLEY	SWO MED
TIME	TRN	Time Unit Leader	SNOW, CURTIS	SWO MED
UTVO	JOB	Utility Terrain Vehicle (UTV) Operator	Beavers, Tobias	SWO MED

## *Industry Personnel ICS Qualifications*

ENGB	JOB	Engine Boss, Single Resource	Dickson, Jad	Industry SWO
ENGB	JOB	Engine Boss, Single Resource	YOUNG, TOM	Industry SWO
FELB	JOB	Felling Boss, Single Resource	Dickson, Jad	Industry SWO
FELB	JOB	Felling Boss, Single Resource	YOUNG, TOM	Industry SWO
HEQB	JOB	Heavy Equipment Boss, Single Resource	Dickson, Jad	Industry SWO
HEQB	JOB	Heavy Equipment Boss, Single Resource	YOUNG, TOM	Industry SWO
BRNB	JOB	Burn Boss	Cummings, Ken	Industry MED
CRWB	JOB	Crew Boss, Single Resource	Graves, Mike	Industry MED
CRWB	JOB	Crew Boss, Single Resource	PESTERFIELD, WILLIAM	Industry MED
DIVS	JOB	Division Group Supervisor	Conner, Rich	Industry MED
DIVS	JOB	Division Group Supervisor	NOVAK, GLENN	Industry MED
ENGB	JOB	Engine Boss, Single Resource	Burgess, Brian	Industry MED
ENGB	JOB	Engine Boss, Single Resource	Burnett, Timothy D	Industry MED
ENGB	JOB	Engine Boss, Single Resource	Conner, Rich	Industry MED
ENGB	JOB	Engine Boss, Single Resource	Graves, Mike	Industry MED
ENGB	JOB	Engine Boss, Single Resource	Johnson, Greg	Industry MED
ENGB	JOB	Engine Boss, Single Resource	MADDEN, TOM	Industry MED
ENGB	JOB	Engine Boss, Single Resource	MEREDITH, MIKE	Industry MED
ENGB	JOB	Engine Boss, Single Resource	NOVAK, GLENN	Industry MED
ENGB	JOB	Engine Boss, Single Resource	PESTERFIELD, WILLIAM	Industry MED
ENGB	JOB	Engine Boss, Single Resource	WIENKE, KEN	Industry MED
ENOP	JOB	Engine Operator	Burnett, Timothy D	Industry MED
ENOP	JOB	Engine Operator	Johnson, Greg	Industry MED
FAL2	JOB	Intermediate Faller	Caster, Levi	Industry MED
FELB	JOB	Felling Boss, Single Resource	Burgess, Brian	Industry MED
FELB	JOB	Felling Boss, Single Resource	Burnett, Timothy D	Industry MED
FELB	JOB	Felling Boss, Single Resource	Caster, Levi	Industry MED
FELB	JOB	Felling Boss, Single Resource	Conner, Rich	Industry MED
FELB	JOB	Felling Boss, Single Resource	Graves, Mike	Industry MED
FELB	JOB	Felling Boss, Single Resource	Johnson, Greg	Industry MED
FELB	JOB	Felling Boss, Single Resource	MADDEN, TOM	Industry MED
FELB	JOB	Felling Boss, Single Resource	MEREDITH, MIKE	Industry MED
FELB	JOB	Felling Boss, Single Resource	NOVAK, GLENN	Industry MED
FELB	JOB	Felling Boss, Single Resource	PESTERFIELD, WILLIAM	Industry MED
FELB	JOB	Felling Boss, Single Resource	WIENKE, KEN	Industry MED
FFT1	JOB	Firefighter Type 1	Conner, Rich	Industry MED
FFT1	JOB	Firefighter Type 1	PESTERFIELD, WILLIAM	Industry MED

FFT2	JOB	Firefighter Type 2	BABONIS, DAVID	Industry MED
FFT2	JOB	Firefighter Type 2	Conner, Rich	Industry MED
FFT2	JOB	Firefighter Type 2	Garrett, William	Industry MED
FFT2	JOB	Firefighter Type 2	Gieseke, Gary	Industry MED
FFT2	JOB	Firefighter Type 2	Hydorn, Mike	Industry MED
FFT2	JOB	Firefighter Type 2	MALFABON, EDDIE H	Industry MED
FFT2	JOB	Firefighter Type 2	MEERTEN, JIM	Industry MED
FFT2	JOB	Firefighter Type 2	MYERS, AL	Industry MED
FFT2	JOB	Firefighter Type 2	OSUNA, JUSTIN	Industry MED
FFT2	JOB	Firefighter Type 2	SMITH, STEVEN M	Industry MED
FFT2	JOB	Firefighter Type 2	VEGA, JUVENAL	Industry MED
FFT2	JOB	Firefighter Type 2	WYATT, STEVE	Industry MED
FOBS	JOB	Field Observer	Cummings, Ken	Industry MED
HEQB	JOB	Heavy Equipment Boss, Single Resource	Burgess, Brian	Industry MED
HEQB	JOB	Heavy Equipment Boss, Single Resource	Burnett, Timothy D	Industry MED
HEQB	JOB	Heavy Equipment Boss, Single Resource	Conner, Rich	Industry MED
HEQB	JOB	Heavy Equipment Boss, Single Resource	Graves, Mike	Industry MED
HEQB	JOB	Heavy Equipment Boss, Single Resource	Johnson, Greg	Industry MED
HEQB	JOB	Heavy Equipment Boss, Single Resource	MADDEN, TOM	Industry MED
HEQB	JOB	Heavy Equipment Boss, Single Resource	MEREDITH, MIKE	Industry MED
HEQB	JOB	Heavy Equipment Boss, Single Resource	NOVAK, GLENN	Industry MED
HEQB	JOB	Heavy Equipment Boss, Single Resource	WIENKE, KEN	Industry MED
ICT4	TRN	Incident Commander Type 4	PESTERFIELD, WILLIAM	Industry MED
ICT5	JOB	Incident Commander Type 5	PESTERFIELD, WILLIAM	Industry MED
LOFR	JOB	Liaison Officer	Cummings, Ken	Industry MED
LRBC	JOB	Local Resource Boss Crew	NYSTROM, MARK	Industry MED
LRBC	TRN	Local Resource Boss Crew	KOSTICK, JUSTIN	Industry MED
LRBD	JOB	Local Resource Boss Dozer	Hippler, Eric	Industry MED
LRBD	JOB	Local Resource Boss Dozer	NYSTROM, MARK	Industry MED
LRBD	TRN	Local Resource Boss Dozer	KOSTICK, JUSTIN	Industry MED
LRBE	JOB	Local Resource Boss Engine	NYSTROM, MARK	Industry MED
LRBE	TRN	Local Resource Boss Engine	KOSTICK, JUSTIN	Industry MED
LRFO	TRN	Local Resource Field Observer	KOSTICK, JUSTIN	Industry MED
LROF	JOB	Local Resource Boss Felling	NYSTROM, MARK	Industry MED
LROF	TRN	Local Resource Boss Felling	KOSTICK, JUSTIN	Industry MED
TFLD	JOB	Task Force Leader	Burgess, Brian	Industry MED
TFLD	JOB	Task Force Leader	Conner, Rich	Industry MED
TFLD	JOB	Task Force Leader	Johnson, Greg	Industry MED
TFLD	JOB	Task Force Leader	NOVAK, GLENN	Industry MED
CRWB	JOB	Crew Boss, Single Resource	BAERTSCHIGER, HERMAN E	Industry GP
DIVS	JOB	Division Group Supervisor	BAERTSCHIGER, HERMAN E	Industry GP

DZOP	JOB	Dozer Operator	BAERTSCHIGER, HERMAN E	Industry GP
DZOP	JOB	Dozer Operator	ROHAN, RICK	Industry GP
ENGB	JOB	Engine Boss, Single Resource	BAERTSCHIGER, HERMAN E	Industry GP
ENGB	JOB	Engine Boss, Single Resource	Hayes, Tom	Industry GP
ENGB	JOB	Engine Boss, Single Resource	MEYER, BRUNO	Industry GP
FALC	JOB	Faller Class C	BAERTSCHIGER, HERMAN E	Industry GP
FALC	JOB	Faller Class C	ROHAN, RICK	Industry GP
FELB	JOB	Felling Boss, Single Resource	BAERTSCHIGER, HERMAN E	Industry GP
FELB	JOB	Felling Boss, Single Resource	Hayes, Tom	Industry GP
FELB	JOB	Felling Boss, Single Resource	KRAUSS, JOE	Industry GP
FELB	JOB	Felling Boss, Single Resource	KRAUSS, MATT	Industry GP
FELB	JOB	Felling Boss, Single Resource	MEYER, BRUNO	Industry GP
FELB	JOB	Felling Boss, Single Resource	ROHAN, RICK	Industry GP
FFT1	JOB	Firefighter Type 1	Hayes, Tom	Industry GP
FFT1	JOB	Firefighter Type 1	MEYER, BRUNO	Industry GP
FFT2	JOB	Firefighter Type 2	Clark, Rodney	Industry GP
FFT2	JOB	Firefighter Type 2	Gould, Mike	Industry GP
FFT2	JOB	Firefighter Type 2	Henneman, Michael W	Industry GP
FFT2	JOB	Firefighter Type 2	Kern, Richard	Industry GP
FFT2	JOB	Firefighter Type 2	KRSKA, JEFFERY S	Industry GP
FFT2	JOB	Firefighter Type 2	SANCHEZ, MARTIN	Industry GP
FIRB	JOB	Firing Boss, Single Resource	BAERTSCHIGER, HERMAN E	Industry GP
FOBS	JOB	Field Observer	MEYER, BRUNO	Industry GP
HEQB	JOB	Heavy Equipment Boss, Single Resource	BAERTSHIGER, HERMAN E	Industry GP
HEQB	JOB	Heavy Equipment Boss, Single Resource	Hayes, Tom	Industry GP
HEQB	JOB	Heavy Equipment Boss, Single Resource	KRAUSS, JOE	Industry GP
HEQB	JOB	Heavy Equipment Boss, Single Resource	MEYER, BRUNO	Industry GP
HEQB	JOB	Heavy Equipment Boss, Single Resource	ROHAN, RICK	Industry GP
ICT3	JOB	Incident Commander Type 3	BAERTSCHIFER, HERMAN E	Industry GP
STEN	JOB	Strike Team Leader Engine	BAERTSCHIGER, HERMAN E	Industry GP
STEQ	JOB	Strike Team Leader Heavy Equipment	BAERTSCHIGER, HERMAN E	Industry GP
TFLD	JOB	Task Force Leader	BAERTSCHIGER, HERMAN E	Industry GP
TFLD	JOB	Task Force Leader	Hayes, Tom	Industry GP

# FIRE/ACCIDENT INVESTIGATORS

## Fire Investigators are available through the following:

Southern Oregon Area Office	541-440-3412
Salem Coordination Center	503-945-7455

	<u>Type</u>	<u>Office</u>
Dave Larson	1	541-440-3412
Bill Smith	2	541-664-3328
Jesse Blair	2	541-474-3152
Lee Winslow	2	541-664-3328
Derreck Johnson	2	541-474-3152

## Additional investigators may be available from the following:

Rogue River/Siskiyou NF	541-858-2340 541-776-7114 24 hr line
Rogue Valley Fire Chiefs Association	541-826-7100
Oregon State Fire Marshall's Office	541-776-6111
Oregon State Police	541-776-6111
Chuck Miller (AD) Type 1 cmfireandforestry@charter.net	541-761-0713 cell
OSFM Supervisor Greg Davis	541-330-8241

# Southwest Oregon Public Information Officers

Name	Agency	Phone 1	Phone 2	E-mail
Natalie Weber	ODF	(541) 664-3328	(541) 621-4005	<a href="mailto:Natalie.r.weber@odf.oregon.gov">Natalie.r.weber@odf.oregon.gov</a>
Brian Ballou	ODF (retired)	(541) 778-9910	(541) 664-3328	<a href="mailto:Brian.Ballou@oregon.gov">Brian.Ballou@oregon.gov</a>
Don Ferguson	BLM (retired)	(541) 482-2660	(541) 778-2679	<a href="mailto:ferguson_don1@gmail.com">ferguson_don1@gmail.com</a>
Don Hickman	JCFD 3 (retired)	(541) 944-2292		<a href="mailto:Flyn4fun@charter.net">Flyn4fun@charter.net</a>
Jeanne Klein	BLM	(541) 471-6614	(541) 261-3124	<a href="mailto:jeanne_klein@blm.gov">jeanne_klein@blm.gov</a>
Lou Gugliotta	JCFD 3 (retired)	(541) 899-8013	(541) 944-3875	<a href="mailto:loubetty@earthlink.net">loubetty@earthlink.net</a>
Margueritte Hickman	Ashland Fire & Rescue (retired)	(541) 941-2681		
Paul Galloway	USFS (retired)	(541) 482-9649	(541) 601-2030	<a href="mailto:pgalloway541@gmail.com">pgalloway541@gmail.com</a>
Tom Lavagnino	USFS (retired)	(541) 941-9131		<a href="mailto:tomlava@gmail.com">tomlava@gmail.com</a>
Virginia Gibbons	USFS	(541) 618-2113	(541) 690-6681	<a href="mailto:vgibbons@fs.fed.us">vgibbons@fs.fed.us</a>
Jim Whittington	BLM (retired)	(541) 841-2672	(541) 261-0424	<a href="mailto:cascadiajim@gmail.com">cascadiajim@gmail.com</a>
Mike Shaw	Office of State Fire Marshal	(541) 944-5065	(541) 218-7558	<a href="mailto:Mike.shaw@state.or.us">Mike.shaw@state.or.us</a>
Jason Bayless	Illinois Valley FD	(541) 450-5852	(541)592-2225	<a href="mailto:jasonbayless@ivfire.com">jasonbayless@ivfire.com</a>
Kent Romney	Private	(541) 955-4695	(541) 292-6019	<a href="mailto:kent@budget.net">kent@budget.net</a>
Chris Chambers	Ashland Fire & Rescue	(541) 552-2066	(541) 890-8816	<a href="mailto:chamberc@ashland.or.us">chamberc@ashland.or.us</a>
Gary Leaming	ODOT	(541) 621-3074		<a href="mailto:gary.w.leaming@odot.state.or.us">gary.w.leaming@odot.state.or.us</a>
Suzanne Brady	CalFire	(530) 842-3516	(530) 598-2622	<a href="mailto:suzanne.brady@fire.ca.gov">suzanne.brady@fire.ca.gov</a>
Ann Maloney	ODF (retired)	(541) 892-7779		<a href="mailto:Maloneyac2@gmail.com">Maloneyac2@gmail.com</a>
Kyle Reed	DFPA	(541) 817-7186	(541) 672-6507	<a href="mailto:Kyle.Reed@oregon.gov">Kyle.Reed@oregon.gov</a>
Austin Prince	Rural Metro FD	(541) 218-7553	(541) 474-1218	<a href="mailto:Austin.prince@ruralmetrofire.com">Austin.prince@ruralmetrofire.com</a>

# Fire Department Directory

Emergency Service may be obtained by calling 911 throughout Jackson & Josephine Counties.

<u>Department/Station/Staff</u>	<u>Office/Fax</u>	<u>Cell</u>	<u>Home</u>
<b>Applegate Valley JCFD # 9 (8500) HQ</b> <b>1095 Upper Applegate Jacksonville, OR 97530</b>	<b>899-1050</b> <b>Fax 899-9314</b>		
Fire Chief Chris Wolfard	899-1050	890-0403	
Captain Josh Howell	899-1050	324-6993	
Captain Mitch Kuntz	899-1050	660-1961	
Captain *Vacant*	899-1050		
Ops Chief Cody Goodnough	899-1050	621-2074	
Office Manager Tallis Jackson	899-1050	928-595-0546	
<b>Ashland Fire &amp; Rescue (8800)</b> <b>455 Siskiyou Blvd Ashland, OR 97520</b>	<b>482-2770</b> <b>Fax 488-5318</b>		
<b>On Duty Battalion Chief</b>	<b>552-2220</b>		
Acting Fire Chief Ralph Sartain	552-2219	301-8872	
Deputy Chief Marshall Rasor			
Fire Marshal	552-2229		
Wildfire Div. Chief Chris Chambers	552-2066	890-8816	
<b>Butte Falls Fire Dept. (6500)</b> <b>PO Box 268 Butte Falls, OR 97522</b>	<b>865-3262</b> <b>Fax 865-3777</b>		
City Hall	865-3262		
Fire Chief Jeff Gorman	865-4383	890-6939	
<b>Colestin Rural Fire Dept. (9000)</b> <b>1701 Colestin Road Ashland, OR 97520</b>	<b>488-1768</b>		
Fire Chief Steve Avgeris	488-1768	821-8339	488-1768
Alt. Contact Cheri Avgeris		821-7461	
<b>Evans Valley Rural Fire Dept.- JCFD # 6 (6600)</b> <b>8677 E Evans Cr. Rd Rogue River, OR 97537</b>	<b>582-0678</b> <b>Fax 582-0696</b>		
Fire Chief Travis Crume, (June 1 Fire Chief Tom Davidson)	582-0678	541-951-3830	
Operation Chief	582-0678		
<b>Grants Pass Fire/Rescue (7300)</b> <b>800 E Park St Grants Pass, OR 97526</b>	<b>450-6200</b> <b>Fax 476-1929</b>		
Fire Marshall/Investigator Joe Hyatt	450-6204	659-7115	
Acting Deputy Chief Randy DeLong	450-6201	218-6775	
Battalion Chief Lloyd Lawless	450-6202		
Battalion Chief Tim DeLisle	450-6202		
Battalion Chief Wayne Nelson/ Ed Goodboe	450-6202		



# Fire Department Directory

Emergency Service may be obtained by calling 911 throughout Jackson & Josephine Counties.

<u>Department/Station/Staff</u>	<u>Office/Fax</u>	<u>Cell</u>	<u>Home</u>
<b>Green Springs Rural Fire (8600)</b> <b>12915 Hwy 66 Ashland, OR 97520</b>	<b>541-488-0911</b>		
Fire Chief – Gene Davies	541-488-0911	621-2859	
<b>Illinois Valley Rural Fire (8900)</b> <b>681 Caves Hwy Cave Junction, OR 97523</b>	<b>592-2225</b> <b>Fax 592-6122</b>		
Fire Chief John Holmes	592-2225	415-1151	
Division Chief Kris Sherman	592-2225	287-0023	
Deputy Chief Kameron Ismaili	592-2225		
Deputy Chief Jeff Gavlik	592-2225	287-0022	597-2044
<b>Jackson Co. Fire Dist. # 3 (7700)</b> <b>White City Station 8333 Agate Road White City, OR 97503</b>	<b>826-7100</b> <b>Fax 826-4566</b>		
Fire Chief – Mike Hussey	831-2751		
Deputy Chief Operations Justin Bates	831-2754		
Deputy Chief Fire Marshal John Patterson	826-7100	944-1428	
A Shift Battalion Chief Cohee	826-2753	951-5119	
B Shift Battalion Chief Jason Allen	826-2753	414-7244	
C Shift Battalion Chief Clelland	826-2753	261-0108	
Deputy Fire Marshal Mark Northrup	831-2776		
Deputy Fire Marshal Darnell	831-2774		
Deputy Fire Marshal Miller	831-2778		
<b>Agate Lake Station</b> <b>880 East Antelope Rd, Eagle Point OR 97524</b>	<b>826-3003</b>		
<b>Central Point Station</b> <b>600 South Front, Central Point OR 97502</b>	<b>664-1234</b>		
<b>Dodge Bridge Station</b> <b>60 Rogue River Dr Eagle Point OR 97524</b>	<b>826-1774</b>		
<b>Eagle Point Station</b> <b>213 Loto St Eagle Point, Or 97524</b>	<b>826-3773</b> <b>Fax 826-3094</b>		
<b>Gold Hill Station</b> <b>299 Access Rd Gold Hill, OR 97525</b>	<b>855-1237</b>		
<b>Sam's Valley Station</b> <b>3333 Tresham Ln Central Point, OR 97502</b>	<b>855-1790</b>		
<b>Scenic Station</b> <b>1909 Scenic Avenue, Central Point OR 97502</b>			

# Fire Department Directory

Emergency Service may be obtained by calling 911 throughout Jackson & Josephine Counties.

<u>Department/Station/Staff</u>	<u>Office/Fax</u>	<u>Cell</u>	<u>Home</u>
<b>Jackson County Fire Dist. # 4 (6400)</b> <b>PO Box 1400 Shady Cove, OR 97539</b>	<b>878-2666</b> <b>Fax 878-3172</b>		
Fire Chief Greg Winfrey (June 1, Fire Chief Travis Crume)	878-2666	541-326-6863	
Captain Nick Fitzpatrick	878-2666		
Captain Erin Elder	878-2666	941-9913	
Captain Eli Buma	878-2666		
<b>Jackson County Fire Dist. # 5 (8300/8400)</b> <b>5811 S Pacific Hwy Phoenix, OR 97535</b>	<b>535-4222</b> <b>Fax 535-4226</b>		
Fire Chief – Charles Hanley	535-4222	541-957-8414	
Deputy Fire Chief/Training - VACANT	535-4222		
Battalion Chief A Aaron Bustard	535-4222		
Battalion Chief B Steve Maziarski	535-4222		
Battalion Chief C Jim Campbell	535-4222		
Fire Prevention Battalion Chief Brian Bolstad	535-4222		
<b>Station 2</b>	<b>482-5991</b>		
<b>40 Neil Crk Rd (Emigrant Lake)</b>	<b>Fax 488-8410</b>		
<b>Station 3</b>	<b>535-8400</b>		
<b>116 W 2nd St Phoenix OR</b>	<b>Fax 535-9590</b>		
<b>Jacksonville Fire Dept. (8200)</b> <b>180 N 3<sup>rd</sup> St Jacksonville, OR 97530</b>	<b>899-7246</b> <b>Fax 899-5006</b>		
Fire Chief Wayne Painter	899-7246	890-4744	
<b>Lake Creek Rural (6900)</b> <b>1584 S. Fork Little Butte Crk Rd Eagle Point, OR 97524</b>	<b>826-2163</b> <b>Fax 826-2163</b>		
Fire Chief Craig Anders	826-2163	840-1576	826-5156
Secretary Rhonda Hussey	826-4086		
Office Manager Mike Hussey	826-2163	227-1090	
<b>Medford City/Rural Fire- JCFD #2 (8100)</b> <b>200 S. Ivy St Medford, OR 97501</b>	<b>774-2300</b> <b>Fax 774-2514</b> <b>or 618-1710</b>		
Fire Chief Eric Thompson	774-2301		
Fire Marshal Chase Browning	774-2317		
Deputy Operations Chief Bryan Baumgartner	774-2306		
Deputy Chief of Professional Services Devon Brown	774-2302		
<u>Department/Station/Staff</u>	<u>Office/Fax</u>	<u>Cell</u>	<u>Home</u>
<b>Rogue Valley Int'l Airport Fire Dept (7900)</b> <b>3650 Fire Station Spur Medford, OR 97504</b>	<b>776-2830</b> <b>Fax 776-0964</b>		
Fire Chief John Karns	776-2830	805-402-4928	

# Fire Department Directory

Emergency Service may be obtained by calling 911 throughout Jackson & Josephine Counties.

<u>Department/Station/Staff</u>	<u>Office/Fax</u>	<u>Cell</u>	<u>Home</u>
<b>Prospect Fire Dept. (6200)</b> <b>276 Mill Creek Dr Prospect, OR 97536</b>	<b>560-3309</b> <b>Fax 560-1119</b>		
Board President Bob Scott	560-4114		
Fire Chief Greg Schaffer	560-3309	541-951-1489	
Capt. Kristine Wilson	560-3309	541-621-6891	
<b>Rogue River Rural Fire- JCFD #1 (7400)</b> <b>PO Box 1170, 5474 N River Rd Gold Hill, 97525</b>	<b>582-4411</b> <b>Fax 582-3456</b>		
Fire Chief Mike Hammond	582-4411	519-6022	
Captain Jarret Estremado	582-4411		
Captain Mike Gavlik	582-4411		
Captain James Chapman	582-4411		
<b>Rural Metro (7500)</b> <b>PO Box 729 ( 807 NE 6th St) Grants Pass, OR 97526</b>	<b>474-1218</b> <b>Fax 479-6753</b>		
<b>On Duty Battalion Chief</b>	<b>291-7593</b>		
Fire Chief Phil Turnbull	474-1218	218-7551	
District Chief Austin Prince	474-1218	218-7553	
Asst. Fire Chief Steve Nelson	474-1218	218-7555	
<b>Jo. Co. Dispatch 911 (Non-ER)</b>	<b>955-5081</b>		
<b>Williams Fire Protection District (8700)</b> <b>PO Box 81 Williams, OR 97544</b>	<b>846-7644</b> <b>Fax 846-7946</b>		
Fire Chief Rick Vetter	846-7644	415-6775	
Shift Captain Oskar Sundell	846-7644		
Shift Captain Nicco Holt	846-7644		
<b>Wolf Creek Rural Fire Department</b> <b>PO Box 1 Wolf Creek, OR 97497</b>	<b>866-2584</b> <b>fax 866-2599</b>		
Fire Chief Steve Scruggs	866-2584	541-218-9922	

# Federal Agencies

<u>Agency/District</u>	<u>Office/Fax</u>	<u>Cell</u>	<u>Home</u>
<b>Klamath National Forest 1711 S Main, Yreka, CA 96097</b>	<b>530-842-6131 Fax 530-841-4571</b>		
Forest Supervisor Rachel Smith	530-841-4502		
Deputy For. Supv. Kris Sexton	530-841-4501	530-598-3369	
Fire Mgt. Officer Michael Appling	530-841-4461	530-598-4142	
Asst. Fire Mgmt. Offr Heather McRae	530-841-4459		
Dispatcher	530-329-6823		
Center Manager Ashley Harris	530-841-4600	530-598-0102	
Assist Manager Clinton Carson	530-841-4600		
<b>Happy Camp/Oak Knoll Ranger District</b>	<b>530-493-2243 Fax 530-493-1796</b>		
District Ranger Jeremy Sullens	530-493-1712	530-643-1091	
Oak Knoll FMO James Allen	530-465-1511	530-598-4111	
Happy Camp FMO Mario Gomez	530-493-1716	530-598-4120	
<b>BLM / Rogue River/Siskiyou NF SO Rogue River &amp; Siskiyou National Forests 3040 Biddle Rd Medford, OR 97501</b>	<b>618-2200 Fax 618-2400</b>		
Forest Supervisor Merv George	618-2030		
Deputy Forest Sup Dave Brillenz	618-2032		
Fire Staff Officer Eric Hensel	618-2100	503-604-3568	
Asst. Fire Staff - ops- Dan Quinones	618-2101	771-0052	
Asst. Fire Staff - fuels	618-2102		
BLM District FMO Chris Glode	618-2241	613-6425	
<b>Rogue Valley Interagency Communications Center 3040 Biddle Rd Medford, OR 97504</b>	<b>618-2510 Fax 618-2515</b>		
Manager Lisa Smyth	618-2509	613-2259	530-768-4033
Aircraft Direct Line	618-2505		
Tanker Base	779-3097		
Tanker Base Mngr Justin Bohannan	618-2121	Tanker base Fax 779-3098	
<b>Siskiyou Mountain Ranger District Star Ranger Station 6941 Upper Applegate Rd Jacksonville, OR 97540</b>	<b>899-3800 Fax 899-3888</b>	<b>Fire Fax 899-9069</b>	
District Ranger Jen Sandborn	899-3810	864-0900	
Fire Mgmt. Officer Rob Marshal	899-3865	580-5915	

# Federal Agencies

<u>Agency/District</u>	<u>Office/Fax</u>	<u>Cell</u>	<u>Home</u>
<b>High Cascade Ranger District Butte Falls PO Box 227 Butte Falls, OR 97522</b>	<b>560-3400</b>		
<b>Prospect 47201 Hwy 62 Prospect, OR 97536</b>	<b>560-3400 Fax 560-3444</b>		<b>Fire Fax 560-3428</b>
District Ranger Dave Palmer	<b>560-3406</b>		
Fire Mgmt. Officer Bryan Myrick	560-3408	690-9621	
<b>Wild Rivers Ranger District Illinois Valley 26568 Redwood Hwy Cave Junction, OR 97523</b>	<b>592-4000 Fax 592-4010</b>		
District Ranger Matt Paciorek	592-4001	971-263-4424	
Fire Management Monty Edwards	471-4020		
<b>Powers Ranger District 42861 Hwy 242 Powers, OR 97466</b>	<b>439-6200 Fax 439-7704</b>		
District Ranger Jessie Berner	439-6201	541-294-3629	
Assist. Fire Mgmt. Offr Keith Smith	439-6263		
Captain	439-6261		
<b>Gold Beach Ranger District Gold Beach 29279 Ellensburg Ave Gold Beach, OR 97444</b>	<b>247-3600 Fax 247-3617</b>		
District Ranger Stephanie Gomez	247-3601		
Fire Mgmt. Officer Russel Willstead	247-3699		
Asst. Fire Mgmt. Officer Raymondo Reyes	247-3660		
Crew Boss Brian Bordlon	247-3685		
<b>Umpqua National Forest 2900 NW Stewart Parkway Roseburg, OR 97471</b>	<b>957-3200 Fax 957-3435</b>		<b>Fire Line 957-3325</b>
Supervisor Alice Carlton	Call main		
Executive Asst *Vacant*	957-3490		
Deputy Supervisor Jake Winn	957-3490		
<b>Cottage Grove Ranger Station</b>	<b>767-5000</b>		
<b>Tiller Ranger Station</b>	<b>825-3100</b>		
<b>Diamond Lake Ranger Station</b>	<b>498-2531</b>		
<b>North Umpqua Ranger Station</b>	<b>496-3532</b>		

## Federal Agencies

<u>Agency/District</u>	<u>Office/Fax</u>	<u>Cell</u>	<u>Home</u>
<b>Roseburg Interagency Communications Center</b>	<b>957-3325</b>		
<b>Tiller Ranger Station 27812 Tiller Trail Hwy Tiller, OR 97484</b>	<b>825-3100 Fax 825-3110</b>		
District Ranger Sherri Chambers	825-3107	Fire Duty Officer, day/night: 672-6830	
<b>Fremont - Winema National Forest/Klamath Ranger District 2819 Dahlia St Klamath Falls, OR 97601</b>	<b>883-6714</b>		
Forest Sup Eric Fey	885-3406		
Fire Staff David Lilly	885-3410		
Asst. Fire Staff	885-3470		
District Ranger Melanie Fullman	885-3406		
Center Manager Wyatt Heffley	883-6853		
Admin Officer Vickie Zacharias	883-6714		
<b>Crater Lake National Park PO Box 7 Crater Lake National Park 97604</b>	<b>594-3060 Fax 594-3050</b>		
Chief Ranger Kaen Mihata	594-3053		
FMO	594-3062		
Fire Ops Supervisor John Harwood	594-3064		
<b>Oregon Caves National Monument National Park Service Ranger Station 19000 Caves Hwy Cave Junction, OR 97523</b>	<b>592-2100</b>		
Superintendent Jeremy Curtis	592-2100 x2222		
Park Ranger Kelly Barstow	592-2100 x2275		

# State/Association Districts

<u>District/Center</u>	<u>Office/Fax</u>	<u>Cell</u>	<u>Home</u>
<b>Coos District</b> <b>63612 5th Rd Coos Bay, OR 97420</b>	<b>267-4136</b>		
District Forester Ryan Greco	267-1742		
<b>CFPA</b>	<b>267-3161</b>	Fax 266-8452	
District Manager Mike Robison	267-3161		
Staff Forester Nils Storksen	267-3161		
Dispatch Supervisor Kim Robison	267-3161		
Lead Dispatcher Alisha Nukusuk	267-3161		
<b>Coos Unit - Coos Bay</b>			
Unit Forester Kyle Gibons	267-3161		
<b>Bridge Unit - Myrtle Point</b>			
Unit Forester Mike White	572-2796		
<b>Gold Beach Unit - Gold Beach</b>			
Unit Forester Derwin Boggs	247-6241		
<b>Douglas District/FPA</b> <b>1758 Airport Rd Roseburg, OR 97470</b>	<b>672-6507</b> <b>Fax 440-3424</b>		
District Manager Pat Skrip	672-6507		
Business Manager Jill Miller	672-6507		
Unit Frstr (Central) Rick Harvey	672-6507		
Unit Frstr (North) Rory Collins	672-6507		
Unit Frstr (South) Aaron Whiteley	839-4469		
Staff Forester Jeff Turchetto	672-6507		
Dispatch Supervisor Randy Leming	672-6507	580-2784	677-0511
<b>Klamath-Lake District</b> <b>3200 DeLap Road Klamath Falls, OR 97601</b>	<b>883-5681</b> <b>Fax 883-5555</b>	<b>Fire Number 947-6315 (Klamath)</b>	
District Forester Teresa Williams	883-5687	219-9144	
Unit Forester Randall Baley	883-5680	891-7861	
Protection Sup Jake Barnett	883-5690	891-8393	892-5538
Ofc Mgr. Pam Brown	883-5696		
Fire Planner Sarah Cantrell	883-5613	891-7862	530-591-3492

# State/Association Districts

<u>District/Center</u>	<u>Office/Fax</u>	<u>Cell</u>	<u>Home</u>
<b>Lakeview Unit 2290 N. 4th Lakeview, OR 97630</b>	<b>947-3311 Fax 947-3078</b>		
Protection Unit Forester Mike Leach	947-3311		
<b>Lakeview Interagency Fire Center</b>	<b>947-6315 Fax 947-6797</b>		
Center Manager Kim Karlaus	947-6779		
ODF Asst Ctr Manager *Vacant*	947-6175		
USFS Asst Ctr Manager Suzi Suba	947-6780		
USFS Asst Ctr Manager Shara Wilkie	947-6781		
<b>Southern Oregon Area 1758 N.E. Airport Rd Roseburg, OR 97470</b>	<b>440-3412 Fax 440-3419</b>		
Area Director Dave Larson	440-3412		
Exec. Specialist Kristina Sheppard	440-3412		
<b>Southwest Oregon District Office/Medford Unit 5286 Table Rock Rd Central Point, OR 97502</b>	<b>664-3328 Fax 664-4340</b>	<b>Dispatch Fax 664-3459</b>	
District Forester Tyler McCarty	664-3328	630-0757	
Asst. Dist. Forester Lee Winslow	664-3328	621-4110	
Wildland Fire Supervisor Bill Smith	664-3328	621-4130	
Wildland Fire Supervisor Taylor Wilkerson	664-3328	621-4120	
Wildland Fire Supervisor Jake Kurzyniec	664-3328	890-8075	
Wildland Fire Supervisor – Dispatch Chelsie Stephens	664-3328	621-4114	
<b>Southwest Oregon District/Grants Pass Unit 5375 Monument Drive Grants Pass, OR 97526</b>	<b>474-3152 Fax 474-3158</b>	<b>Dispatch Fax 471-3892</b>	
Asst. Dist. Forester Brandon Kerns	474-3152	660-9272	
Wildland Fire Supervisor Jesse Blair	474-3152	660-9657	
Wildland Fire Supervisor Tim Swink	474-3152	660-0728	
Wildland Fire Supervisor *Vacant*	474-3152		
Wildland Fire Supervisor – Dispatch Stacy Collins	471-3880	660-1197	



## State/Association Districts

<u>District/Center</u>	<u>Office/Fax</u>	<u>Cell</u>	<u>Home</u>
<b>CAL Fire HQ PO Box 128 Yreka, CA 96097</b>	<b>530-842-3516 Fax 530-842-7952</b>		<b>Fire Number: Emergency 530-842-3515 Dispatch Non-ER 530-842-7066 Dispatch Non-ER 530-842-7054 Fax 530-842-6953</b>
Ranger Unit Chief Phil Anzo	530-842-3516		
Operations Daryl Laws	530-842-3516		
Administration Harper Keene	530-842-3516		
Dispatch Ctr. Mgr. John Kiszka	530-842-3516	530-598-2609	
Prevention Bat. Greg Roath	530-842-3516		
Training Officer Jason Stone	530-842-3516	530-598-2607	
<b>Crescent City (Station)</b>	<b>707-464-5526</b>		

## Other Cooperators

<u>Company/Department</u>	<u>Office/Fax</u>	<u>Cell</u>	<u>Home</u>
<b>Central Oregon &amp; Pacific Railroad INC PO Box 1083 Roseburg, OR 97470</b>	<b>EMERGENCY 802-527-3499 NON ER 802-527-8728</b>		
<b>2 E. McAndrews Rd Medford OR 97501</b>	<b>857-9670 Fax 858-9805</b>		
<b>911 Communication Centers</b>			
Jo. Co 911 101 NW A St Grants Pass OR 97526	955-5081		
ECSO/Medford 400 Pech Rd Central Point, OR 97502	776-7206 Fax 776-7768		
Oregon State Police 911 4500 Rogue Valley Dr Central Point, OR 97502	776-6111 Fax 664-5287		
<b>National Weather Service 4003 Cirrus Drive Medford, OR 97504</b>	<b>773-1067 Fax 776-4333</b>		
Non Public Fire Line	776-4332		
<b>US Army Corp of Engineers</b>			
Lost Creek	878-2255		
Local Contact Jessie Huber	878-1081		

<b>The Nature Conservancy</b> 647 Washington St. Ashland OR 97520	<b>770-7933</b>		
Darren Borgias	770-7933	821-3723	
Molly Morison	770-7933	941-8579	
<b>Oregon Dept. of Fish &amp; Wildlife</b> 1495 E. Gregory Rd Central Point, OR 97502	<b>826-8774</b>		
Regional Office-- Roseburg	440-3353		
Wildlife Images	476-0222		
<b>Jackson County Community Justice</b> 5505 S. Pacific Hwy, Phoenix, OR 97535	<b>774-6610</b>		
<b>Oregon State Police &amp; State Fire Marshall</b> 4500 Rogue Valley Hwy Suite A Central Point, OR 97502	<b>776-6111</b> <b>Patrol Fax 664-</b> <b>8762</b>		
OSFM Salem --- 4760 Portland Rd NE Salem, OR 97305	503-378-3473		

## Other Cooperators

<u>Company/Department</u>	<u>Office/Fax</u>	<u>Cell</u>	<u>Home</u>
<b>Oregon Dept. of Environmental Quality</b> 221 Stewart Ave Suite 201 Medford, OR 97501	<b>776-6010</b> <b>Fax 776-6262</b>	<b>Toll Free 877-823-3216</b>	
<b>Oregon Dept. of Transportation</b>	<b>Dispatch 858-3103</b>		
345 NE Agness Ave Grants Pass OR 97526	474-3149		
4141 Hamrick Rd Central Point, OR 97503	665-5210		
706 Toleman Creek Rd Ashland, OR 97520	482-4344		
2557 Altamont Dr. Klamath Falls, OR 97603	850-6657		
Lake of the Woods Coord. Sean Stevens	891-3059		
Port of Entry	776-6004		
<b>Oregon National Guard</b>			
Grants Pass Armory 666 Brookside Blvd Grants Pass, OR 97526	<b>503-584-2203</b>		
GP Armory - SFC Jeff Hurst	503-584-3093		
Medford Armory 1701 S Pacific Hwy Medford, OR 97501	<b>503-584-3081</b>		
MED Armory - SFC Phil Disney	503-584-3081		

<b>Power line Shutdowns</b>			
Bonneville Power Admin. Dittmer Dispatch Center- Vancouver	800-392-0816		
<b>Pacific Power</b>			
<b>825 NE Multnomah Bldg. 1033 Portland, OR 97232</b>	<b>Dispatch 541-779-3277</b>		
Medford Office 925 Grape St Medford, OR 97501	776-5425		
General Foreman – Joe Salavome	776-5425	601-0631	
Line Patrolman – Scott Reed	776-5416	944-5522	
Medford Manager - Tom Ide	776-5475		
Grant Pass Office 1420 Williams Hwy. Grants Pass OR 97527	955-7916		
Dave Schoeber	955-7900	541-274-1971	
Steve Stevens	955-7903	458-212-4556	

## Other Cooperators

<u>Company/Department</u>	<u>Office/Fax</u>	<u>Cell</u>	<u>Home</u>
<b>Public Works\ Roads Department</b>			
Josephine County 201 River Heights Way Grants Pass, OR 97527	474-5460		
<b>Jackson County – Roads Dept.</b> 200 Antelope Rd White City, OR 97503	774-8184		
<b>Search and Rescue</b>			
Jackson Co. 620 Antelope Rd White City, OR 97503	864-8830		
Josephine Co. 500 NW 6 <sup>th</sup> Grants Pass, OR 97526	474-5123 Opt 7		
<b>Sheriff</b>			
Jackson Co. – Nate Sickler 5179 Crater Lake Hwy Central Point, OR 97502	776-8923 Fax 776-7699		
Josephine Co – Dave Daniel 500 NW 6 <sup>th</sup> Grants Pass, OR 97526	474-5123		
<b>SOTIA - Southern Oregon Timber Industries Assoc.</b> 724 S. Central Ave Suite 201 Medford OR 97504	773-5329		

<b>Avista - Natural Gas</b> <b>580 Business Park Drive Medford, OR 97501</b>	<b>Dispatch</b> <b>800-227-9187</b>		
Operations Manager – Brian Taylor	858-4757		
<b>Century Link (Land/Fax Lines)</b> <b>(24hr repair/emergency line activation)</b>	800-422-0124		
<b>Butte Falls Watershed - Medford Water Commission</b> Dennis Berg	<b>865-3376</b>	840-3901	
<b>Medford Irrigation District</b>	899-9913	Weekends/Emergencies 770-0277	
<b>Medford Water Commission HQ</b> Craig Harper	774-2430	778-1729	
<b>Eagle Point Irrigation District</b> David Ford	826-3411	890-9193	865-7763
<b>Talent Irrigation District</b>	535-1529	Emergencies/after hours 770-0315	
<b>Grants Pass Irrigation District</b>	476-2582 Fax 479-9461		

# PARKS

Ashland Parks and Recreation, The Grove 1195 E. Main St, Ashland, 97520.....	541-488-5340
Crater Lake National Park, National Park Service .....	541-594-3000
Diamond Lake Resort, Diamond Lake, 97331	
Information Center (Closed Winter).....	541-793-3310
Diamond Lake Lodge .....	541-793-3333
Howard Prairie Resort, 3249 Hyatt Prairie Rd, Ashland, OR 97520 .....	541-482-1979
Hyatt Lake Resort, 7900 Hyatt Prairie Rd, Ashland, OR 97520 .....	541-482-3331
Jackson County Parks and Recreation, 7520 Table Rock Rd, Central Pt, OR .....	541-774-8183
Lake of the Woods Resort, 950 Harriman Rd, Klamath Falls, OR 97601 .....	541-949-8300
Medford Parks and Recreation, 701 N Columbus Ave, Medford, OR 97501 .....	541-774-2400
Stewart State Park - Lost Creek Lake .....	541-560-3334
Tou Velle State Park – White City .....	541-826-2257
Valley of the Rogue State Park – Rogue River (Nathan Seable) .....	541-582-1118
State Parks Reservation Information (summer only) .....	1-800-452-5687
State Parks Information .....	1-800-551-6949
Union Creek Resort, 56484 Hwy 62, Prospect, OR 97533 .....	541-560-3565
Fish Lake Resort .....	541-949-8500
<b>Josephine County parks Department.....</b>	<b>541-474-5285</b>
Lake Selmac (Selma)	
Almeda (Galice)	
Tom Pearce (East Grants Pass)	
Wolf Creek (Wolf Creek)	
White Horse. Indian Mary, Griffin & Schroeder Parks (West Grants Pass)	

# SOUTHERN OREGON CIRCUIT COURTS

**Curry County, Gold Beach Circuit Court**, 94235 Moore St Suite 200, Gold Beach, OR 97444

Cite for: Monday 9am Phone: 247-4511  
At Circuit Court Rm. 1

**Douglas County Circuit Court - Roseburg**

Cite for: Phone: 957-2471  
Monday - Friday 8:15am-5pm

**Jackson County Circuit Court - Medford** - 100 South Oakdale, Medford

Cite for: Wednesday 3pm Phone: 776-7171

**Josephine County Circuit Court – Josephine County Courthouse, Grants Pass**

Cite for: Monday-Friday 9am Phone: 476-2309

**District Attorney – Medford** 715 W. 10<sup>th</sup> St., Medford Phone: 774-8181

## DISTRICT LOGISTICS AND SUPPLIES LIST

Vendor	Address	City	Phone	Contact	Comments
<b>Auto Parts</b>					
AutoZone	1695 NE 6th St	Grants Pass	541.956.1190		
AutoZone	1601 Williams Hwy	Grants Pass	541.472.9700		
Car Quest Auto Parts	525 NE E St	Grants Pass	541.479.7524		
Napa Auto Parts	229 SW H St	Grants Pass	541.476.1500		USE FIRST FOR JOSEPHINE COUNTY
Napa Auto Parts	660 Rossanley Dr	Medford	541.779.6196		
Napa Auto Parts	327 Redwood Hwy	Cave Junction	541.592.6223		
<b>White City</b> Napa Auto Parts	2465 Ave A	White City	541.826.5560		Use first. Will create special account for fire teams. JACKSON COUNTY
Quality Automotive Parts	531 SW G St	Grants Pass	541.474.9858		
<b>Car Rental</b>					
Avis	3038 Biddle Rd	Medford	541.622.6624		
Budget	3038 Biddle Rd	Medford	541.779.0488		
Butler Ford	1899 OR-99	Ashland	541.482.2521		
Enterprise Rent-a-Car	610 N Central Ave	Medford	541.772.1200		Use first - On price agreement
Enterprise Rent-a-Car	715 Union Ave	Grants Pass	541.471.7800		
Hertz	1101 Fisher Ave	Medford	541.773.4293		
<b>Foodstuffs</b>					
Coca-Cola	3074 Crater Lake Ave	Medford	541.200.4533	Patrick	Adam: 541.646.8089 or Jason West 541.261.6395
Costco	3075 Hamrick Rd	Central Point	541.737.4227		Purchase order required
Food 4 Less	2230 Biddle Rd	Medford	541.779.0171		
Franz Bakery	690 Biddle Rd	Medford	541.772.5816		
Fred Meyer	2424 Crater Lake Hwy	Medford (North)	541.779.6158		
Fred Meyer	1101 Grants Pass Pkwy	Grants Pass	541.474.7200		
Frito Lay	55 Schultz Rd	Central Point	541.665.5164		
McDonald's Wholesale			800.637.3071		
Pepsi	510 Airport Rd	Medford	541.210.3723	Ken	Or 251.858.7086 or 541.659.4338
Pepsi		Grants Pass	541.858.7087		
Ray's Food Place	3500 Merlin Rd	Grants Pass	541.476.4551		Merlin
Reddy Ice	2190 Joseph St	Medford	918.230.0196		Josh / Only order when we have a fire ice machine
Reddy Ice		Grants Pass	541.982.9504		

Rogue Ice	824 E Jackson St	Medford	541-500-9856	<i>(trailers avail for fire camp rental too)</i>	
United Grocers / Cash N Carry	2033 Cardinal Ave	Medford	541.773.9849	Dan Bartlett 541.776.0891	Earl Garrett: 541.245.5325
<b>Fuel</b>					
Hays Oil	1890 S Pacific Hwy	Medford	541.772.2053		#4
Hays Oil - The Oil House	529 NE F St	Grants Pass	541.476.2218		#2 Joe - ext. 1200
Jackson County			541.774.8184		
Mayfield Oil	2500 Foothill Blvd	Grants Pass	541.476.7731		Emergency After Hours: 541.660.1031
Carson - Medford Fuel - Bill Terpening Inc.	936 S Central Ave	Medford	541.773.7311		
Shirtcliff Oil	283 SW Western Ave	Myrtle Creek	541.863.5268	<i>(has a truck to vend product in fire camp)</i>	After Hours: Andrew 541.543.9223
<b>Garbage Removal / Can Rental</b>					
Republic Services	1920 NW Washington Blvd	Grants Pass	541.479.3371		No emergency service
Rogue Disposal	1 W Main St, Ste 401	Medford	541.779.4161		
Southern Oregon Sanitation Inc.	1381 Redwood Ave	Grants Pass	541.479.5335	Trent Carpenter	After Hours: 541.659.1005
Southern Oregon Sanitation Inc.	42 Ball Rd	Eagle Point	541.826.5691		
<b>Gray Water Removal</b>					
#1 A Fresh Way Septic Tank Cleaning Service	7561 Crater Lake Hwy A-2	Medford	541.772.6954	Dan	541.840.0687 or 541.772.6954
#1 A Fresh Way Septic Tank Cleaning Service	1045 Angler Ln	Grants Pass	541.476.8477		
#2 Clearwater Technologies	111 Haines Ln	Merlin	541.471.6226		
#3 Allied Water Service	301 Manzanita Dr	Rogue River	800.432.1183	Graham Corns	541.890.6767 or 541.582.8177
Hukill's Inc.	3650 Crater Lake Ave	Medford	541.734.9000		
Gray Water Dumpsite	Kirtland Rd		541.621.4106	Paul Blankenship	
Drain Pros		Medford/Grants Pass	541.734.9000 541.474.1600		
<b>Laundry Services</b>					
Sunshine Laundry	870 NE D St	Grants Pass	541.476.3519		Drop-off only
Weldon's Cleaners	644 Crater Lake Ave	Medford	541.772.7973		



Vogue Cleaners	1610 SW Allen Creek Rd	Grants Pass	541.955.1911	Joe & Kelli Chandler	541.324.9424 - Pick-up and/or drop-off
<b>Medical Supplies</b>					
BiMart	990 Biddle Rd	Medford	541.772.3461		
BiMart	230 Redwood Hwy	Grants Pass	541.479.8365		Pharmacy: 541.479.8337
Costco	3075 Hamrick Rd	Central Point	541.734.2482		Purchase order required
<b>Miscellaneous</b>					
Coastal	7303 Crater Lake Hwy	White City	541.830.3713		
Diamond Home Improvement	1881 NE 7th St	Grants Pass	541.471.4300		
Farmer's Building Supply	1741 Dowell Rd	Grants Pass	541.476.0851		
Field's Home Improvement	5285 Williams Hwy	Grants Pass	541.862.2111		
Grange Co-op	225 S Front St	Central Point	541.664.6691		
Grange Co-op	1710 SW Schultzwahl Ln	Grants Pass	541.476.7771		
Home Depot	111 NE Mill St	Grants Pass	541.226.0114		
Lowe's	3601 Crater Lake Hwy	Medford	541.776.8421		
Norton's Lumber Company	5th St	Phoenix	541.535.1533		
Roley's Pacific Supply	1644 SE N St	Grants Pass	541.479.7578		
Tru Value	232 N Redwood Hwy	Cave Junction	541.592.3562		
<b>Miscellaneous Rental</b>					
CJ Rentals	4460 Table Rock Rd, Unit 5	Central Point	541.664.4099		
Grants Pass Equipment Rentals	285 Rogue River Hwy	Grants Pass	541.476.5219		
Party Place	924 Chevy Way	Medford	541.414.8030	Kelly	541.776.7729 - Rentals: Ice chests, large tents, tables & chairs
United Rentals	2216 W Main St	Medford	541.857.1235		541.773.7323
Valley Equipment Rentals	1840 Willow Ln	Grants Pass	541.955.6611		
Woodville Rental & Supply	127 Oak St	Rogue River	541.582.4296		
<b>Hotel</b>					
Holiday Inn Express	285 Penninger Rd	Central Point	541.423.1010	Leilani Perez	Set up for direct bill
La Quinta Inn	1777 Larue Dr	Central Point	541.665.4141	Tina Patell	May need to set up direct bill at time of stay (but they are aware)

Best Western	111 NE Agness Ave	Grants Pass	541.476.1117	Carter Jarman	Use ODF Account #58
Hampton Inn & Suites	110 NE Morgan Ln	Grants Pass	541.474.5690	Samantha Chanquet	Set up for direct bill
Holiday Inn Express	105 NE Agness Ave	Grants Pass	541.471.6144	Doug Bradley	Set up for direct bill
La Quinta Inn	243 NE Morgan Ln	Grants Pass	541.472.1808	Jennifer Madsen	Set up for direct bill
Quality Inn & Suites	1889 NE 6th St	Grants Pass	541.479.8301	Christi Bell	Set up for direct bill - Remind them ODF is a direct bill when making a reservation
Red Lion Inn & Suites	1880 NE 6th St	Grants Pass	541.479.8391	Melissa Breedlove	Set up for direct bill
Super 8 by Wyndham	1949 NE 7th St	Grants Pass	541.226.3260	Brandy Larsen	Set up for direct bill
Best Western	1154 E Barnett Rd	Medford	541.779.5085	Leslie Gilson	Set up for direct bill
Candlewood Suites	3548 Heathrow Way	Medford	541.772.2800	Eric Engleman	Set up for direct bill - When making a reservation, use rate code: IX0GZ
Comfort Inn North	2280 Biddle Rd	Medford	541.772.9500	Melissa Westfall	Set up for direct bill - ODF Account #559824
Comfort Inn South	60 E Stewart Ave	Medford	541.772.8000	Stephanie	Set up for direct bill
Inn at the Commons	200 N Riverside Ave	Medford	541.779.5811	Cassandra Cole	Set up for direct bill
Quality Inn & Suites	1950 Biddle Rd	Medford	541.368.7882	Taya Adams	Set up for direct bill
Super 8 by Wyndham	4999 Biddle Rd	Medford	541.727.0191	Sarah Jones	Set up for direct bill
Motel Del Rogue	2600 Rogue River Hwy	Grants Pass	541.479.2111	Kevin Marr	Set up for direct bill
<i>When making a hotel reservation ensure that the hotel has the following information: 1. Your full name and phone number, 2. A resource order number (aka: an "s" number), 3. The complete fire number, 4. The name(s) of the person(s) for whom the reservation is being made</i>					
<b>Office Supplies</b>					
Kelley Connect	1327 Redwood Ave	Grants Pass	541.761.8222	John or Katy Parsons	In Medford also
Office Depot	3565 Crater Lake Hwy	Medford	541.772.5571		Use SPOTS Card
Pacific Office Automations	341 N Central Ave	Medford	541.772.8125		Copier rental: Stephanie: Service or Renee: Supply
Pacific Survey Supply	908 N Riverside Ave	Medford	541.772.5777		
Staples	901 NE D St	Grants Pass	541.955.5018		
ABC Office Machines		Grants Pass	479-1481		761-8222 Rentals Cell Phone – Katy Parsons
<b>Phone Lines</b>					
Century Link			800.786.6272		Sales, service & repair
Century Link			503.425.3346	Richard Unrein	Government Accounts

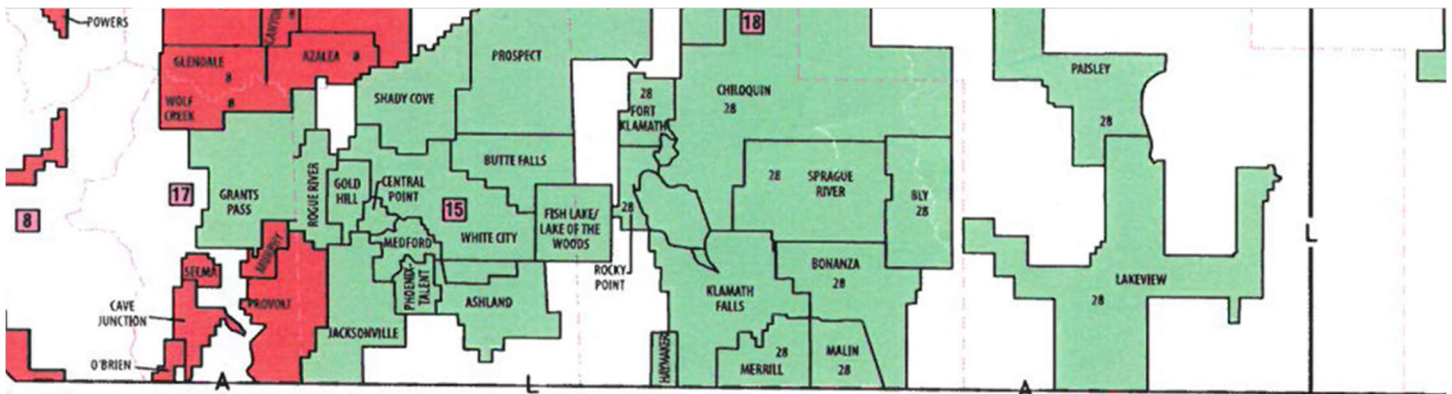
Century Link			800.223.7508		To request lines
Frontier Communications			800.921.8102		Business customers
State of Oregon Repair Desk			800.422.0124	Bob	24 hr repair service & emergency line activation
<b>Port-A-Potties</b>					
A Affordable Royal Flush		Grants Pass	541.479.6935	John or Candy	Emergency after hours: John - 541.538.0303 or Candy - 541.941.6565
A Affordable Royal Flush		White City	541.772.3389		
DND Porta Potti		Medford	541.773.6350		541.955.3097
DND Porta-Potti	111 Haines Ln	Merlin	541.476.3654		541.761.4598 or 541.761.4592 - Fax: 541.476.7748
Jefferson State Pumping		Grants Pass/Medford	541.955.4991 541.857.2923		
Stewards Porta Potti	40985 OR-62	Prospect	541.734.7343		
Recology Sanitation		Ashland	541-482-1471		
<b>Potable Water</b>					
Grayback Forestry Inc.	1150 Ort Ln	Merlin	541.476.0033		
H2O to Go Water Services		Grants Pass	541.476.1756		Cell: 541.890.1505
Marie's Water Delivery		Eagle Point	541.890.2754		541.830.0808
ODFW	1495 E Gregory Rd	White City	541.826.8774		
Willie Katin	1651 Pinecrest Dr	Grants Pass	541.660.4158		541.471.2313 - 2,000 & 3,500 gallon
U.S. Water Delivery		Medford	541.582.4444		
<b>Propane</b>					
AmeriGas Propane	1126 Rogue River Hwy	Grants Pass	541.476.7797		
Carson Propane	6006 Monument Dr	Grants Pass	541.956.1863		Goes to message for emergency
Ferrell gas	6093 Crater Lake Hwy	Central Point	541.826.4664		Account: 49260994
Suburban Propane	624 SE J St	Grants Pass	541.476.1436		
Suburban Propane	2175 Joseph St	Medford	541.772.5101		
Universal Propane		Grants Pass	541.956.1863		Goes to message for emergency
<b>Restaurants</b>					
Apple Peddler Restaurant	7405 Hwy 62	White City	541.826.8330	Ray	Open: 24-7 Sack Lunches: Yes 100/3hr notice Fire Meals: 80
Bella Union	170 W California St	Jacksonville	541.899.1770	Christian Hamilton	Sarah Farnsworth or Jerry Hayes Mon-Sat 1130-2400, Sun 1000-

					2100 Fire Meals: 20
Denny's	115 NE Morgan Ln	Grants Pass	541.479.4544	Alysse Carlson	Open: 24/7 Sack Lunches: No Fire Meals: 150
Figaros Pizza	175 N 2nd Ave	Gold Hill	541.855.7770	Tracy Ford Joe Weinshrott	E: 541.326.1035 Open: 1100-2100 Sack Lunches: Yes 30-50/12hr notice Fire Meals: 35
Iron Skillet	3730 Fern Valley Rd	Phoenix	541.535.3385	Wilma McConahie Rhonda Burkett	E: 541.621.0095 - Wilma 541.838.1714 - Rhonda Open: 0600-2300 Sack Lunches: No Fire Meals: 144
La Burrita	1501 NE F St	Grants Pass	541.471.1444	Lilia Martinez	E: 541.660.4672 - Lilia Open: 1100- 2200 Sack Lunches: Yes Fire Meals: 200
Lil Pantry	148 Merlin Rd	Merlin	541.479.1533	Manager or Asst Mgr	Open: 0500-2400 Sack Lunches: Yes 24/4hr notice Fire Meals: 12
	310 Merlin Rd	Merlin	541.476.1566	Manager or Asst Mgr	Open: 0500-2400 Sack Lunches: Yes 24/4hr notice Fire Meals: 12
	5030 Monument Dr	Grants Pass	541.476.7390	Manager or Asst Mgr	Open: 0500-2400 Sack Lunches: Yes 24/4hr notice Fire Meals: 12
	979 Rogue River Hwy	Grants Pass	541.476.2171	Manager or Asst Mgr	Open: 0500-2400 Sack Lunches: Yes 24/4hr notice Fire Meals: 12
	2017 NW Vine St N	Grants Pass	541.476.3303	Manager or Asst Mgr	Open: 0500-2400 Sack Lunches: Yes 24/4hr notice Fire Meals: 12
	7600 Crater Lake Hwy	White City	541.826.4291	Manager or Asst Mgr	Open: 0500-2400 Sack Lunches: Yes 24/4hr notice Fire Meals: 12
	5017 Table Rock	Central Point	541.664.4440	Manager or Asst Mgr	Open: 0500-2400 Sack Lunches: Yes 24/4hr notice Fire Meals: 12
	501 E Main St	Rogue River	541.582.5902	Manager or Asst Mgr	Open: 0500-2400 Sack Lunches: Yes 24/4hr notice Fire Meals: 12
Millie's Sandwich Shop	731 NE 7th St	Grants Pass	541.854.7866	Sam	Mon-Sat 1000-1800 Closed Sundays Sack Lunches:

					100/2hr notice Fire Meals: No
Olive Garden	3125 Crater Lake Hwy	Medford	541.857.1733	Marla Weichert Jim Andrews	Mon-Thu, Sun 1100-2200, Fri & Sat 1100-2300 Sack Lunches: No Fire Meals: 30
Riffle Café	450 Merlin Rd	Merlin	541.778.6555 T 541.778.6556 D 541.291.7439 R	David or Tami Skeen Rachael Lydick	Mon-Thu 0700-1500, Fri & Sun 0700-1930 Sack Lunches: 350/3hr notice Fire Meals: 75
Sam's Place	8530 Monument Dr	Grants Pass	541.295.8960	Hardeep Singh	Open: 1000-2100 Sack Lunches: 100/1hr notice Fire Meals: 20
Shari's	190 NE Agness Ave	Grants Pass	541.474.6699	Linda Dewitt	Open: 24-7 Sack Lunches: No Fire Meals: 144
Shari's	210 Penninger Road	Central Point	541.665.7070	Jerry Knouff	Open: 24-7 Sack Lunches: No Fire Meals: 35
Shari's	71 Stewart Ave	Medford	541.857.8969	Dana Breedlove Bobbi Rae Allen	Open: 24-7 Sack Lunches: No Fire Meals: 151
Taylor's Sausage	202 S Redwood Hwy	Cave Junction	541.592.5358 541.415.0453 S 541.415.4345 R	Scott Taylor Rachel Gibson Jaycee	Open 0700-1900 Sack Lunches: Yes 200/48hr notice Fire Meals: 85
Wild River Brewing	249 N Redwood Hwy	Cave Junction	541.592.3556	Ray Barto or Charleen	Daily 1000-2200 Sack Lunches: Yes 100/2hr notice Fire Meals: 150
Wild River Brewing	595 NE E St	Grants Pass	541.471.7487	Shaun Hoback Jesse or Eric	Daily 1030-2200 (will stay open later if we call) Sack Lunches: Yes 100/1hr notice Fire Meals: 150
Wild River Pizza	2684 N Pacific Hwy	Medford	541.773.7487	Matt or Olin	Mon-Thu, Sun 1030-2200, Fri & Sat 1030-2300 Sack Lunches: Yes 100/2hr notice Fire Meals: 300
<b>Transportation</b>					
First Student Inc.	126 Ringuette St	Grants Pass	541.476.7733		
First Student Inc.	813 Mason Way Unit 2	Medford	541.772.1114		
<b>Security</b>					

CYA Security	14 N Central Ave Ste 001	Medford	541-944-0137	Tom Hoefft	
Concierge Home & Business Watch	1051 NE 6th St	Grants Pass	541.476.9019		541.218.9672
EBM Security	861 Medford Center	Medford	541.772.3134		
Josephine County Search & Rescue		Grants Pass	541.218.7153	Cory Krauss	
OSP Retirees		Grants Pass	503.378.2110	Steve Lane	Ext 405
OSP Retirees		Medford			
Vanguard Security Solutions		Medford	541.227.8387 or 541.842.2446		Can work in GP

## Telephone Company Coverage



### LEGEND

- FRONTIER COMMUNICATIONS
- CENTURYLINK
- INDEPENDENTS & COOPERATIVES
- UNCLAIMED
- COUNTY LINE
- LATA LINE
- AREA CODE LINE
- LATA & AREA CODE LINE

### \* OTHER TELEPHONE COMPANIES

1. TDS TELECOM - ASOTIN TEL. CO. - ASOTIN, WA.
2. BEAVER CREEK CO-OP TEL. CO. - BEAVER CREEK
3. CANBY TELECOM - CANBY
4. CASCADE UTILITIES INC. - ESTACADA
5. CLEAR CREEK COMMUNICATIONS - OREGON CITY
6. COLTONTEL - COLTON
7. OREGON - IDAHO UTILITIES - CALDWELL, ID.
8. FRONTIER COMMUNICATIONS
9. EAGLE TEL. CO. - RICHLAND
10. GERVAIS TEL. CO. - GERVAIS
11. HELIX TEL. CO. - HELIX
12. HOME TEL. CO. - CONDON
13. OREGON TEL. CORP - MTE - MIDVALE, ID.
14. MOLALLA COMMUNICATIONS - MOLALLA
15. MONITOR CO-OP TEL. CO. - WOODBURN
16. MONROE TEL. CO. - MONROE
17. MT. ANGEL TEL. CO. - MT. ANGEL
18. NEHALEM TELECOMMUNICATIONS, INC.
19. NORTH-STATE TEL. CO. - MT. VERNON
20. OREGON TEL. CORP. - MT. VERNON
21. PEOPLES TEL. CO. - LYONS
22. PINE TEL. SYS. INC. - HALFWAY
23. PIONEER TEL. CO-OP - PHILOMATH
24. ROOME TELECOMMUNICATIONS, INC. - HALSEY
25. ST. PAUL CO-OP TEL. ASSOCIATION - ST. PAUL
26. SCIO MUTUAL TEL. ASSOCIATION - SCIO
27. STAYTON CO-OP TEL. CO. - STAYTON
28. CENTURYLINK
29. TRANS-CASCADE TEL. CO. - ESTACADA

# Josephine/Jackson County Parks/Potential Fire Camps

<u>Park Name</u>	<u>County</u>	<u>Primary Contact</u>	<u>Secondary Contact</u>	<u>Potential Fire Camp</u>	<u>Legal</u>	<u>Lat &amp; Long</u>	<u>Restrooms</u>	<u>Showers</u>	<u>Electric</u>	<u>Phones</u>
<b>Almeda Park</b> 14800 Galice Rd	JO	Jo Co. Parks 474-5285 Doreen Ferguson 761-4304	George Armstrong 659-1717 Roy Riihimaki 660-3518 Josh Sabota 659-0539	Yes	34S 7W S19 NWNW	42° 36.366" x 123° 34.830	No	No	No	No
<b>Ashland Park and Recreation</b> 340 S. Pioneer St	JA	488-5340								
<b>BLM Elderberry Flat Campground</b> West Fork Evans Creek Rd.	JA	MIC 618-2510		Yes	33S 3W S31 SENE	42° 39.683 x 123° 5.686	No	No	No	No
<b>BLM Provolt Seed Orchard</b> 14000 Blk Williams Hwy	JO	MIC 618-2510		Yes	38S 5W S1 SESE	42° 17.350 x 123° 13.864	1	1	Yes	1
<b>BLM Sprague Seed Orchard</b> 1980 Russell Rd. Merlin	JO	MIC 618-2510		Yes	35S 6W S9 NWSE	42° 32.416 x 123° 24.819	3	No	Yes	Yes
<b>Butte falls public works: Chris Bray</b>	JA	541-816-5184		Yes					YES	
<b>Cantrall Buckley Park</b> 154 Cantrall Rd.	JA	Ja Co Parks 776-7001	Rick Barclay 899-7155	Yes	38S 3W S33 NESW	42° 13.200 x 123° 3.952	Yes	Yes		Yes
<b>Crater Lake National Park</b>		541-594-3000			30S 5E S33 NENW	42° 56.000 x 122° 7.997				
<b>Diamond Lake Resort</b> 3500 Diamond Lake Loop Diamond Lake, 97331		Info Center 793-3310 Lodge 793-3333			28S 5E S8 NESW	43° 9.516 x 122° 9.052				
<b>Emigrant Lake Rec Area</b> 5505 Hwy 66, Ashland	JA	Ja Co Parks 776-7001		Yes	39S 2E S20 NWSW	42° 9.649 x 122° 36.952				
<b>Fish Lake Resort MM</b> 30 Hwy 140 Eagle Point, OR 97524	KL	949-8500			38S 5E S26 SENE	42° 14.199 x 122° 11.352				
<b>Howard Prairie Lake Rec Area</b> Dead Indian Memorial Rd.	JA	482-1979/Ja Co Parks 776-7001		Yes	38S 3E S25 NWNW	42°14.466 x 122° 24.735				

<b>Hyatt Lake Campground</b> 7979 Hyatt Prairie Rd 44	JA	482- 3331/MIC 618-2510		Yes	39S 3E S16 SWSE	42° 10.366 x 122° 28.147				
<b>Indian Mary Park</b> 7185 Galice Rd.	JO	Jo Co. Parks 474- 5285 Doreen Ferguson 761-4304	George Armstrong 659- 1717 Roy Riihimaki 660-3518 Josh Sabota 659-0539	Yes	35S 7W S4 NWSW	42° 33.183 x 123° 32.469	Yes	Yes	Yes	No
<b>Jackson County Expo</b> 1 Penninger Rd. Central Pt. <b>Jackson County Parks and Rec</b> 7520 Table Rock Rd Central Point, OR 97502	JA  JA	776-7237  774-8183	Dave Doellermeier 774-8270	Yes	37S 2W S2 SENW	42° 23.033 x 122° 54.547	Yes	Yes	Yes	Yes
<b>Lake Selmac</b> 500 Reeves Creek, Selma	JO	Jo Co. Parks 474- 5285 Doreen Ferguson 761-4304	George Armstrong 659- 1717 Roy Riihimaki 660-3518 Josh Sabota 659-0539	Yes	38S 7W S18 SWSW	42° 15.533 x 123° 34.769	Yes	Yes	Yes	Yes
<b>Park Name</b>	<b>Count y</b>	<b>Primary Contact</b>	<b>Secondary Contact</b>	<b>Potenti al Fire Camp</b>	<b>Legal</b>	<b>Lat &amp; Long</b>	<b>Restroo ms</b>	<b>Shower s</b>	<b>Electri c</b>	<b>Phone s</b>
<b>Lake of the Woods Resort</b> 950 Harriman Rd Klamath Falls, OR 97601		949-8300								
<b>Lost Creek Guard Station</b> 550 Takelma Dr. Trail OR	JA	ODF Medford 664-3328		Yes	33S 1E S34 SENW	42° 39.583 x 122° 41.363				
<b>Madrone Trail Charter School</b> (Old West Side School) 3070 Ross Lane, Medford	JA	MIC 618- 2510	Joe Frodsham (541) 842-3657 cell (541) 821- 3686	Yes	37S R2W S16 SESW	42° 20.800 x 122° 56.714	Yes	Yes	Yes	Yes
<b>Medford Parks and Rec</b> 701 N. Columbus Ave Medford, OR 97501	JA	774-2400								
<b>Scenic Middle School</b> 1955 Scenic Ave. Central Point	JA	Central Point School Dist. #6 494-6400	Vicky Robinson w-494-6211 h- 664-8832 Randy Gravon w-494-6201 h- 772-6081 Rick Berryhill w-494-6921 h- 664-1535	Yes	37S 2W S3 NWNE	42° 23.233 x 122° 55.364	Yes	Yes	Yes	Yes



<b>State Parks Reservation Info</b>		1-800-452-5687								
<b>State Parks Info</b>		1-800-551-6949								
<b>Stewart State Park-Lost Creek Reservoir</b> Lewis Rd. Prospect	JA	OR State Parks 560-3334		Yes	33S 2E S20 NWSE	42° 40.949 x 122° 36.919	Yes	Yes	Yes	Yes
<b>TouVelle State Park</b> 8400 Table Rock Rd.	JA	826-2257/OR State Parks 582-1118	800-551-6949	Yes (Type 2/3 Incident s)	36S 2W S13 SENW	42° 26.516 x 122° 53.197	Yes	Yes	Yes	Yes
<b>Union Creek Resort</b> 56484 Hwy 62 Prospect, OR 97533		560-3565	Nathan Seable (Manager) c-415-2654							
<b>Valley of the Rogue State Park</b> 3792 N. River Rd. Gold Hill	JA	OR State Parks 582-1118 ext. 22	Nathan Seable (Manager) c-415-2654	Yes	36S 4W S26 NWSW	42° 24.649 x 123° 8.986	Yes	Yes	Yes	Yes

## AMBULANCE SERVICE

**Call 911 for assistance with ambulances**

Ashland Fire & Rescue, 455 Siskiyou Blvd., Ashland, 97520 ..... 482-2770  
 Mercy Flights, 3650 Biddle Rd, #14 Medford, OR 97504 ..... (also Air Ambulance) 779-6551  
 Oregon National Guard Air Search and Rescue thru OEM (24hrs) ..... 1-800-452-0311  
 Butte Falls ..... 911  
 AMR 401 NW "F" St., Grants Pass, OR 97526. .... 474-6303  
 Rogue River Fire Dept. (3 ambulances) 5474 N. River Rd., Rogue River, OR 97537 ..... 582-4411

## HOSPITALS

Asante Rogue Regional Medical Center  
 2825 Barnett Rd.  
 Medford, OR 97504  
 Information 789-7000  
 Helipad Coordinates  
 42°19.083'  
 122°49.817'

Providence Medford Medical Center  
 1111 Crater Lake Ave.  
 Medford, OR 97504  
 Information 732-5000  
 Helipad Coordinates  
 42°20.333'  
 122°51.767'

Asante Ashland Community Hospital  
 280 Maple Street  
 Ashland, OR 97520  
 Information 541-201-4000  
 No helipad

Asante Three Rivers Medical Center  
 500 SW Ramsey Ave.  
 Grants Pass, OR 97527  
 Information 541-472-7000  
 No helipad

# AIRPORTS

The purpose of this list is to provide information for possible landing sites. Pilots should reference up-to-date information such as sectionals and airport facility directories.

## JACKSON COUNTY

<u>Airport Name</u>	<u>Location by Landmark</u>	<u>Telephone</u>	<u>Latitude</u>	<u>Longitude</u>
Aeropuerto De Los Banditos AP	6 mi E Gold Hill	541-855-1638	42°26.499	122°55.702
Ashland Municipal Sumner-Parker	1 mi NE of Ashland	541-482-7675	42°11.416	122°39.636
Beagle Sky Ranch AP- Airstrip	15 mi N of Medford	541-826-2668	42°32.433	122°54.586
Allen - Helibase	7 mi NW Eagle Point	541-826-6485	42°32.246	122°54.395
Burrill AP	5 mi N Medford	541-826-2221	42°26.833	122°50.802
East Oregon Cattle Co AP	4 mi NW of White City	541-826-4147	42°31.183	122°51.269
Erickson HP	1 mi N Central Point	541-664-5544	42°24.166	122°56.669
Medford-Jackson Co AP	3 mi N of Medford	541-776-7222	42°22.350	122°52.280
Medford Tower		541-776-4296		
Mucky Flat AP	18 mi NE Eagle Point	541-826-3110	42°43.749	122°48.002
Pinehurst State AP	1 mi SW of Pinehurst	541-378-4880	42°06.500	122°22.997
Prospect State AP	1 mi E Prospect	541-378-4880	42°44.599	122°29.219
Providence Hospital HP	NE Medford	541-773-6611	42°26.000	122°51.830
Rogue Valley Medical HP	SE Medford	541-770-4151	42°19.083	122°49.764
Rogue Air AP	1 mi E Shady Cove	541-878-2766	42°37.166	122°48.164
Spring Brook AP	9 mi N Rogue River	541-582-2120	42°34.800	123°10.897
Sutton-on-Rogue AP	3.5 NW White City	541-826-5126	42°29.133	122°51.835
Timberland HP	3 mi NE Ashland	541-488-2880	42°12.333	122°37.947
ODF Medford HP	2 mi E. Central Point	541-664-3328	42°23.666	122°53.080
Lake Creek HP	10 mi NW Butte Falls	541-878-2470	42°39.599	122°41.752

## JOSEPHINE COUNTY

<u>Airport Name</u>	<u>Location by Landmark</u>	<u>Telephone</u>	<u>Latitude</u>	<u>Longitude</u>
Backachers Ranch AP	5 mi E Selma	541-592-3305	42°16.800	123°30.902
Calvert Airstrip (BLM - closed)	15 mi WNW Glendale	541-770-2242	42°46.733	123°43.969
Flying B Ranch AP	4 mi SE Selma	541-597-2418	42°14.699	123°33.802
Hendershot's HP	3 mi SW Merlin	541-476-7553	42°30.999	123°26.335
Hodana Field AP	2 mi SW of Williams	541-846-6971	42°11.666	123°19.697
Illinois Valley AP	5 mi S Cave Junction	541-474-5285	42°06.266	123°40.869
Inland Helicopter HP	1 mi NE GP	541-476-7244	42°28.166	123°19.586
Josephine County AP	5 mi NW Grants Pass	541-474-5285	42°30.499	123°22.252
Sportsmen's Ranch AP	4 mi E Cave Junction	818-342-3544	42°09.699	123°34.902
Wonder "International" AP	2 mi W Grants Pass	541-770-4466	42°26.833	123°33.169



**DISTRICT FIRE CACHE AVAILABLE EQUIPMENT - MEDFORD UNIT**

<b>TYPE</b>	<b>LOCATION</b>	<b>PHONE</b>
<b>Hand Tools &amp; Accessories</b> Equip 100 fire fighters	Central Point	664-3328
<b>Engine Trucks &amp; Pick-ups</b> 3- 4x4 Artic Cat ATV 2 - Ford Escape (14-476) Ford Explorer (15-422) 1 Ford 4x4 (120) 2 pick-up 1 ton 4x4 Chevy, 1 Dodge 2500 w/150 gal slip-ons 1 Flatbed 1 Ton 4x4 1 engine 400 gallon 4x4 (241) 1 engine 400 gallon 4x4 (543) 1 engine 400 gallon 4x4 (534) 1 engine 400 gallon 4x4 (222) 1 engine 400 gallon 4x4 (221) 1 engine 640 gallon (523) 1 engine 400 gallon 4x4 (231) 1 engine 400 gallon 4x4 (242) 1 engine 400 gallon 4x4 (244) 1 engine 400 gallon 4x4 (232) 1 engine 400 gallon 4x4 (233) 1 engine 1000 gallon 6x6 (926) 1 Tender 3000 Gal (928) 1 F-350 4x4-equipped with Diesel fuel tank 2 Ram 5500 400 Gal Spares (10-412, 11-437) 10 ½ Ton 4x4 (05-466, 05-470, 06-409, 06-429, 06-433, 07-493, 08-424, 08-426, 20-???, 20-???) 1 Ton Svc Truck (13-415) 1 ¾ Ton 4x4 (17-464)	CP HQ CP HQ CP HQ CP HQ CP HQ CP HQ Jacksonville Ashland Butte Falls CP HQ CP HQ CP HQ East Evans Creek Cantrall-Buckley Lincoln Lost Creek Lost Creek CP HQ CP HQ CP HQ CP HQ CP HQ CP HQ CP HQ CP HQ CP HQ CP HQ	664-3328 664-3328 664-3328 664-3328 664-3328 664-3328 664-3328 899-1234 482-4408 865-3962 664-3328 664-3328 664-3328 664-3328 664-3328 664-3328 482-0161 878-2470 878-2470 664-3328 664-3328 664-3328 664-3328 664-3328 664-3328 664-3328 664-3328 664-3328
<b>Equipment</b> 4 Mark III, 1 Mark 26 Pacific pump 10000' 1-1/2" cotton/line hose 10000' 1" cotton/linen hose 11 pressure pumps 1 3" volume pump 2 Waterous floto-pumps 6 Helicopter Tanks - 4-70 gallon, 2-130 gallon 3 1000 gallon fold-a-tanks 5 1500 gallon fold-a-tanks	CP HQ	664-3328
<b>Bulldozer</b> 1 John Deere 750 (417)	CP HQ	664-3328
<b>Transport</b> 1 International tractor and Lowboy (40T)	CP HQ	664-3328
<b>Crew Carriers</b> 1 – Ram 5500 4x4 (319) 11 person crew carrier	CP HQ	664-3328
<b>Other Equipment</b> 1 dump truck 3 yard 1 Backhoe 10 Cell Phones Unassigned 821-2541 through 821-2550 40 Power Saws, Husqvarna/Stihl 2 stock trailer for cache items (each can supply 40 acre fire) 3 Helicopter Crash Kit	CP HQ	664-3328